

1
2
3
4
5
6
7
8
9
10
11
12
13
14
15
16
17
18
19
20
21
22
23
24
25
26
27
28

IN THE SUPERIOR COURT OF THE STATE OF ARIZONA
IN AND FOR THE COUNTY OF MARICOPA

IN RE THE GENERAL
ADJUDICATION OF ALL RIGHTS
TO USE WATER IN THE GILA
RIVER SYSTEM AND SOURCE

W-1, W-2, W-3, W-4 (Consolidated)

Contested Case No. **W1-11-2739**

**ORDER INITIATING CONTESTED
CASE AND SETTING DEADLINES**

CONTESTED CASE NAME: *In re ASLD – D.M. Martin*
HSR INVOLVED: San Pedro Hydrographic Survey.
DESCRIPTIVE SUMMARY: The Clerk of Maricopa County Superior Court is directed to initiate W1-11-2739. Arizona State Land Department shall file a statement confirming which claims they intend to pursue by **July 7, 2025**, and draft abstracts by **September 8, 2025**.
NUMBER OF PAGES: 16

General Explanation

This order opens a case to determine rights to use water on land owned by the Arizona State Land Department ("ASLD").

In this case, Larsen Ranch and Arizona State Land Department ("Claimants") filed Statements of Claimant ("SOCs") 39-2410–18, 39-7309–17, 39-13282, 39-13294–99, 39-13300–02. These SOC's contain multiple stock watering, stockpond, and fish and wildlife claims. The Arizona Department of Water Resources ("ADWR") investigated

the claims and prepared Watershed File Report (“WFR”) 113-13-006, published in the Final San Pedro Watershed Hydrographic Survey Report (1991) (“HSR”). A copy of the WFR is attached as Attachment B. The WFR describes the following water uses:

Use	Quantity	Location
Stockpond	≤ 15 acre-feet	NWNWSE33 11S, 21E
Stockpond	≤ 15 acre-feet	SESWNW34 11S, 21E
Stockpond	18.1 acre-feet	SESWSE35 11S, 21E
Stockpond	≤ 15 acre-feet	SESWSW01 12S, 21E
Stockpond	≤ 15 acre-feet	SWNWNE09 12S, 21E
Stockpond	≤ 15 acre-feet	NESENE03 12S, 21E
Stockpond	≤ 15 acre-feet	NESENE04 12S, 21E
Stockpond	33.5 acre-feet	SWSWSE05 12S, 21E
Stockpond	≤ 15 acre-feet	SESENE10 12S, 21E
Stockpond	≤ 15 acre-feet	SESESW11 12S, 21E
Stockpond	≤ 15 acre-feet	NWNESE15 12S, 21E
Stockpond	≤ 15 acre-feet	SENESE09 12S, 21E
Stockwatering	N/A	SWNWNW33 11S, 21E
Stockwatering	N/A	NWSENE34 11S, 21E
Stock watering	N/A	NWSWSW36 11S, 21E
Stock watering	N/A	SESWSE01 12S, 21E
Stockwatering	N/A	NWSENE03 12S, 21E
Stockwatering	N/A	NWNWNE03 12S, 21E
Stock watering	N/A	SESWNW34 11S, 21E
Stock watering	N/A	NWNWSW05 12S, 21E
Stock watering	N/A	SWSENE11 12S, 21E
Stock watering	N/A	NWNWNE32 11S, 21E
Stock watering	N/A	SWSWSE10 12S, 21E

1	Stock watering	N/A	NENESW12 12S, 21E
2	Stock watering	N/A	NWNWNW05 12S, 21E
3	Stock watering	N/A	NESWSE03 12S, 21E
4	Stock watering	N/A	NWSWNE14 12S, 21E
5	Stock watering	N/A	SENE14 12S, 21E
6	Stock watering	N/A	SENE16 12S, 21E

7 After ADWR issued the WFR, objections were filed to the findings made in the
8 WFR by ASLD, Gila River Indian Community, San Carlos Apache Tribe, Tonto Apache
9 Tribe, Yavapai-Apache Nation, and the United States.

10 **Claimant and Landowners**

11 WFR 113-13-006 lists the Arizona State Land Department ("ASLD") as the owner
12 of the property investigated. ASLD records indicate that the property investigated
13 currently comprises ASLD Parcel 05-91897, which is leased by Broken Dipper Ranch
14 LLC. A map depicting the approximate places of use identified in the WFR is attached
15 as Attachment C. The public records of ADWR do not contain any assignments of the
16 SOC listed in the WFR. Further, neither the state nor lessee appear to have filed any
17 additional SOC's since the issuance of the 1991 HSR.

18 To obtain a decreed water right, a property owner must present to the Court an
19 SOC claiming a water right and evidence of that right. This evidence may include the
20 relevant WFR. Alternatively, the property owners may settle with objectors. If either the
21 property owner proves to the Court the existence of a water right on their property or
22 enters into a valid settlement approved by the Court, the court will recognize enforceable
23 water rights in a "Final Decree." Ariz. Rev. Stat. § 45-257(B).

25 **IT IS ORDERED:**

26 **1. Case Initiation.** This order initiates contested case W1-11-2739. This case will
27 resolve claims to use appropriable water asserted in Statement(s) of Claimant 39-
28

2410–18, 39-7309–17, 39-13282, 39-13294–99, 39-13300–02 and objections that were filed to Watershed File Report No. 113-13-006.

2. Statement of Confirmation. ASLD shall review all SOC's relevant to this contested case and provide a statement to the Court by **July 7, 2025**, confirming which claims they intend to pursue. Proceedings concerning stockpond claims will be stayed until the Court resolves the pending issue of broad legal importance in case *In re Fred and Carol Telles*, W1-11-1511.

3. Draft Abstracts. ASLD shall file draft abstracts for its stock watering claims by **September 8, 2025**. The Parties shall file any comments to the draft abstracts by **September 29, 2025**.

4. Parties. The litigants in this contested case are the current landowner, lessees, and all parties who filed objections to the Watershed File Report. The objectors are ASLD, Gila River Indian Community, San Carlos Apache Tribe, Tonto Apache Tribe, Yavapai-Apache Nation, and the United States.

5. Objections. Copies of objections filed to this case can be found under the respective case names and numbers on the following website: <http://www.superiorcourt.maricopa.gov/SuperiorCourt/GeneralStreamAdjudication/whatsNew.asp>.

6. Court-Approved Mailing List.

A. The initial Court-approved mailing list for this case shall include all persons listed on Attachment D to this order. The list may be modified only by filing a motion with the Special Master to amend the Court-approved mailing list. Litigants are responsible for using the current Court-approved mailing list.

B. A copy of any pleading filed with the Clerk of the Maricopa County Superior Court in this case shall be served upon each person listed on the Court-

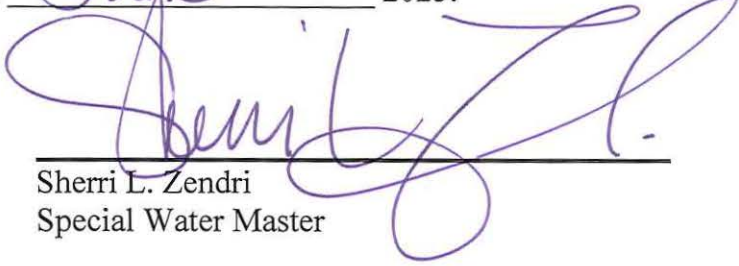
1 approved mailing list.

2 C. Claimants wishing to be added or removed from the mailing list shall file a
3 motion with the Special Master. Parties allowed to intervene will be
4 automatically added to the Court-approved mailing list.

5 D. The Clerk of the Court will send copies of all minute entries and orders issued
6 in this case to the parties listed on the Court-approved mailing list.

7 E. Claimants who would like to receive courtesy copies of minute entries and
8 orders may request inclusion on an email list by sending a request to
9 emily.natale@jbazmc.maricopa.gov.

10
11 Signed this 5th day of June 2025.

12
13
14 
15 Sherri L. Zendri
16 Special Water Master
17
18
19

20 On June 5, 2025, the original of
21 the foregoing was delivered to the Clerk of the
22 Maricopa County Superior Court for filing and
23 distributing a copy to all persons listed on the
24 Court-approved mailing list for this contested
25 case, a copy of which is attached, and to all
26 persons listed on the Court-approved mailing list
27 for W1, W2, W3, and W4.

28

Emily Natale

ATTACHMENT A

General Background on the Water Rights Determination Process in Arizona

A general stream adjudication is a judicial proceeding to determine the quantity and priority of all water rights in a river system. Arizona is undertaking general stream adjudications of both the Gila River and the Little Colorado River systems. A river system includes surface water flowing “in streams or other natural channels,” groundwater sufficiently connected to that surface water, and water subject to claims by the federal government. Ariz. Rev. Stat. § 45-251(7). Recognizing and respecting water rights and the priority of such rights is important in Arizona where times of drought or water scarcity can occur.

All cases begin with the filing of a “Statement of Claimant,” (“SOC”) in which a property owner makes a claim for a right to use surface water on their property. Ariz. Rev. Stat. § 45-254(A). This person is the “claimant.” The SOC contains, among other characteristics, a description of the source and quantity of the water used, the location of use, the location from which the water was diverted, and the date when the water was first put to use. *Id.* § 45-254(C).

After the property owner files the SOC, the Arizona Department of Water Resources (“ADWR”) prepares a “Watershed File Report,” (“WFR”) in which ADWR investigates the claims in the SOC and recommends water rights associated with the property. *Id.* § 45-256(B). ADWR compiles all WFRs for a watershed into a comprehensive Hydrographic Survey Report (“HSR”) and publishes the report for public review and comment. In response, other claimants in the Adjudication may file “objections” disputing the information or recommendations in the WFR. The individuals who file objections are called “objectors.”

This “contested case”, one of thousands in the Gila River System, will evaluate claims asserted in specific Statements of Claimant while considering objections to the WFR that reported ADWR’s initial inspection of those claims.

1
2
3
4
5
6
7
8
9
10
11
12
13
14
15
16
17
18
19
20
21
22
23
24
25
26
27
28

ATTACHMENT B
Watershed File Report



LAND OWNER	WATERSHED FILE REPORT NUMBER	LESSEE/ALLOTTEE	LEASE-PERMIT ID
SLD	113-13-006	MARTIN, D.M.	05-91897

A P P L I C A B L E F I L I N G S A N D D E C R E E S

CLEARLY STATED INFORMATION FROM FILINGS AND DECREES

FILING NUMBER	FILING STATUS	USES	QUANTITY IN AFA	USE LOCATION SECTION TWNP RNGE	CLAIM DATE	DIVERSION LOCATION SECTION TWNP RNGE
10-0224452.1100		IRRIGATION STOCK	453.00	SWNW12 120S 210E	1915	SWNW12 120S 210E
10-0226593.1100		MINING IRRIGATION DOMESTIC STOCK	272.00	05 120S 210E	1917	E2E205 120S 210E
10-0227063.1100		MINING IRRIGATION STOCK	272.00	W212 120S 210E	1917	W212 120S 210E
10-0227167.1100		MINING IRRIGATION DOMESTIC STOCK		S2NW12 120S 210E	1917	S2NW12 120S 210E
10-0227168.1100		IRRIGATION DOMESTIC STOCK		S2NW12 120S 210E	1917	S2NW12 120S 210E
10-0228430.1100		STOCK		NW05 120S 210E	1919	NW05 120S 210E
36-0004742		STOCK	3.90	NESE15 120S 210E	1884	NESE15 120S 210E
36-0004743		REC/FISH/WLDF	2.25	SENE10 120S 210E	1884	SENE10 120S 210E
36-0004744		STOCK	8.90	NWNE09 120S 210E	1884	NWNE09 120S 210E
36-0004745		REC/FISH/WLDF	11.50	SESW05 120S 210E	1884	SESW05 120S 210E
36-0004746		STOCK	.51	SENW04 120S 210E	1884	SENW04 120S 210E
36-0004747		REC/FISH/WLDF	4.10	SENE03 120S 210E	1884	SENE03 120S 210E
36-0004748		STOCK	15.00	NESW35 110S 210E	1884	NESW35 110S 210E
36-0004749		REC/FISH/WLDF	5.10	SWNW34 110S 210E	1884	SWNW34 110S 210E
36-0004750		STOCK	4.20	SENW33 110S 210E	1884	SENW33 110S 210E
36-0005515		REC/FISH/WLDF	.10	NWNE32 110S 210E	1884	SWNE32 110S 210E
36-0005527		STOCK	5.30	SENE32 110S 210E	1884	SENE32 110S 210E
36-0005528		REC/FISH/WLDF	.16	SENE32 110S 210E	1884	NESE32 110S 210E
36-0005529		STOCK	.10	SESW01 120S 210E	1884	SESW01 120S 210E
36-0005530		REC/FISH/WLDF	.10	SWNW01 120S 210E	1884	SWNW01 120S 210E
36-0005531		STOCK	.16	NESW01 120S 210E	1884	NESW01 120S 210E
36-0005532		REC/FISH/WLDF	.76	NWSW01 120S 210E	1884	NWSW01 120S 210E
36-0005533		STOCK	.86	E2NE05 120S 210E	1884	E2NE05 120S 210E
36-0005534		REC/FISH/WLDF	.16	NWNE05 120S 210E	1884	NWNE05 120S 210E
36-0005535		STOCK	.16	N2NW05 120S 210E	1884	N2NW05 120S 210E
38-0070303		REC/FISH/WLDF	1.68	NESE08 120S 210E	1947	NESE08 120S 210E
38-0070305		STOCK	2.20	NWSW09 120S 210E	1948	NWSW09 120S 210E
38-0070306		STOCK	2.20	NENW09 120S 210E	1947	NENW09 120S 210E
38-0070311		STOCK	2.20	SENE10 120S 210E	1958	SENE10 120S 210E
38-0070312		STOCK	2.20	SENW09 120S 210E	1976	SENW09 120S 210E
38-0070313		STOCK	2.20	NWSE04 120S 210E	1968	NWSE04 120S 210E
38-0070315		STOCK	2.20	NENW02 120S 210E	1968	NENW02 120S 210E

CLEARLY STATED INFORMATION FROM FILINGS AND DECREES

FILING NUMBER	FILING STATUS	USES	QUANTITY IN AFA	USE LOCATION SECTION	TWNP	RNGE	CLAIM DATE	DIVERSION SECTION	TWNP	LOCATION RNGE
38-0070316		STOCK	2.20	NESW35	110S	210E		NESW35	110S	210E
38-0070317		STOCK	2.20	SWNE34	110S	210E	1949	SWNE34	110S	210E
38-0070318		STOCK	2.20	SESW05	120S	210E	1976	SESW05	120S	210E
38-0088499		STOCK	4.20	SWNW34	110S	210E	1949	SWNW34	110S	210E
		REC/FISH/WLDLF								
38-0088504		STOCK	3.90	NESE15	120S	210E	1947	NESE15	120S	210E
		REC/FISH/WLDLF								
38-0088505		STOCK	33.50	SESW05	120S	210E	1976	SESW05	120S	210E
		REC/FISH/WLDLF								
38-0088524		STOCK	3.68	SENW33	110S	210E	1947	SENW33	110S	210E
		REC/FISH/WLDLF								
38-0088567		STOCK	4.10	NENW02	120S	210E	1968	NENW02	120S	210E
		REC/FISH/WLDLF								
38-0088572		STOCK	2.70	NWSE04	120S	210E	1968	NWSE04	120S	210E
		REC/FISH/WLDLF								
38-0088575		STOCK	2.25	SENE10	120S	210E	1958	SENE10	120S	210E
		REC/FISH/WLDLF								
38-0088596		STOCK	7.50	SENW09	120S	210E	1976	SENW09	120S	210E
		REC/FISH/WLDLF								
38-0094601		STOCK		SESW01	120S	210E	1884	SESW01	120S	210E
		REC/FISH/WLDLF								
38-0094602		STOCK	.76	NENW09	120S	210E	1884	NENW09	120S	210E
		REC/FISH/WLDLF								
38-0094603		STOCK	.86	SESW11	120S	210E	1947	SESW11	120S	210E
		REC/FISH/WLDLF								
39-0002410		STOCK	2.20	NESE15	120S	210E	1947	NESE15	120S	210E
39-0002411		STOCK	2.20	NWSE04	120S	210E	1968	NWSE04	120S	210E
39-0002412		STOCK	2.20	SENE10	120S	210E	1958	SENE10	120S	210E
39-0002413		STOCK	1.68	SENW33	110S	210E	1947	SENW33	110S	210E
39-0002414		STOCK	2.20	SESW01	120S	210E	1948	SESW01	120S	210E
39-0002415		STOCK	2.20	NENW02	120S	210E	1968	NENW02	120S	210E
39-0002416		STOCK	2.20	NESW35	110S	210E	1925	NESW35	110S	210E
39-0002417		STOCK	2.20	SENW09	120S	210E	1976	SENW09	120S	210E
39-0002418		STOCK	2.20	SESW05	120S	210E	1976	SESW05	120S	210E
39-0007309	AMENDED	STOCK	3.80	SENW33	110S	210E	1884	SENW33	110S	210E
		REC/FISH/WLDLF	.40							
39-0007310	AMENDED	STOCK	4.60	SWNW34	110S	210E	1884	SWNW34	110S	210E
		REC/FISH/WLDLF	.50							
39-0007311	AMENDED	STOCK	13.20	NESW35	110S	210E	1884	NESW35	110S	210E
		REC/FISH/WLDLF	1.80							
39-0007312	AMENDED	STOCK	3.69	SENE03	120S	210E	1884	SENE03	120S	210E
		REC/FISH/WLDLF	.41							
39-0007313	AMENDED	STOCK	.46	SENW04	120S	210E	1884	SENW04	120S	210E
		REC/FISH/WLDLF	.05							
39-0007314	AMENDED	STOCK	30.15	SESW05	120S	210E	1884	SESW05	120S	210E
		REC/FISH/WLDLF	3.35							
39-0007315	AMENDED	STOCK	8.00	NWNE09	120S	210E	1884	NWNE09	120S	210E
		REC/FISH/WLDLF	.90							
39-0007316	AMENDED	STOCK	2.00	SENE10	120S	210E	1884	SENE10	120S	210E
		REC/FISH/WLDLF	.25							
39-0007317	AMENDED	STOCK	3.50	NESE15	120S	210E	1884	NESE15	120S	210E
		REC/FISH/WLDLF	.40							
39-0013282		STOCK	.09	NENW32	110S	210E	1884	NENW32	110S	210E
		REC/FISH/WLDLF	.01	NESE32	110S	210E		NESE32	110S	210E
				NWNE32	110S	210E		NWNE32	110S	210E
39-0013294		STOCK	4.80	SESW01	120S	210E	1884	SESW01	120S	210E
		REC/FISH/WLDLF	.50							
39-0013295		STOCK	.15	NENW11	120S	210E	1884	NENW11	120S	210E
		REC/FISH/WLDLF	.01	NWNE11	120S	210E		NWNE11	120S	210E
				SWNE11	120S	210E		SWNE11	120S	210E
39-0013296		STOCK	.09	E2NE05	120S	210E	1884	E2NE05	120S	210E
		REC/FISH/WLDLF	.01							
39-0013297		STOCK	.09	NWNE05	120S	210E	1884	NWNE05	120S	210E
		REC/FISH/WLDLF	.01	N2NW05	120S	210E		N2NW05	120S	210E
39-0013298		STOCK	.15	NESE08	120S	210E	1884	NESE08	120S	210E
		REC/FISH/WLDLF	.01	NWSW09	120S	210E		NWSW09	120S	210E
39-0013299		STOCK	.69	NENW09	120S	210E	1884	NENW09	120S	210E
		REC/FISH/WLDLF	.07							
39-0013300	AMENDED	STOCK	.77	SESW11	120S	210E	1884	SESW11	120S	210E
		REC/FISH/WLDLF	.09							
39-0013301		STOCK	.15	NESW10	120S	210E	1884	NESW10	120S	210E
		REC/FISH/WLDLF	.01	NESE10	120S	210E		NESE10	120S	210E

CLEARLY STATED INFORMATION FROM FILINGS AND DECREES

FILING NUMBER	FILING STATUS	USES	QUANTITY IN AFA	USE LOCATION SECTION	TWNP	RNGE	CLAIM DATE	DIVERSION LOCATION SECTION	TWNP	RNGE
39-0013301				NWSE10	12OS	21OE		NWSE10	12OS	21OE
39-0013302		STOCK	.15	NENW16	12OS	21OE	1884	NENW16	12OS	21OE
		REC/FISH/WLDLF	.01	NESW16	12OS	21OE		NESW16	12OS	21OE
				SENW16	12OS	21OE		SENW16	12OS	21OE

D W R A N A L Y S I S O F F I L I N G S A N D D E C R E E S

FILING NUMBER	USES CLAIMED OR REFERENCED	USES FOUND BY DWR	APPLIES TO DIVERSIONS	APPLIES TO PWR NUMBERS
10-0224452.1100	IRRIGATION	NONE		
	STOCK	NONE		
	MINING	NONE		
10-0226593.1100	IRRIGATION	NONE		
	DOMESTIC	NONE		
	STOCK	NONE		
	MINING	NONE		
10-0227063.1100	IRRIGATION	NONE		
	STOCK	SPRING		
	MINING	NONE		
10-0227167.1100	IRRIGATION	NONE		
	DOMESTIC	NONE		
	STOCK	NONE		
10-0227168.1100	IRRIGATION	NONE		
	DOMESTIC	NONE		
	STOCK	NONE		
10-0228430.1100	STOCK	SPRING		
36-0004742	STOCK	STOCK		SW011
	WILDLIFE	INCIDENTAL		
36-0004743	STOCK	STOCK		SW009
	WILDLIFE	INCIDENTAL		
36-0004744	STOCK	STOCK		SW005
	WILDLIFE	INCIDENTAL		
36-0004745	STOCK	STOCK		SW008
	WILDLIFE	INCIDENTAL		
36-0004746	STOCK	STOCK		SW007
	WILDLIFE	INCIDENTAL		
36-0004747	STOCK	STOCK		SW006
	WILDLIFE	INCIDENTAL		
36-0004748	STOCK	STOCK		SW003
	WILDLIFE	INCIDENTAL		
36-0004749	STOCK	STOCK		SW002
	WILDLIFE	INCIDENTAL		
36-0004750	STOCK	STOCK		SW001
	WILDLIFE	INCIDENTAL		
36-0005515	STOCK	STOCK		SW010
	WILDLIFE	INCIDENTAL		
36-0005527	STOCK	STOCK		SW004
	WILDLIFE	INCIDENTAL		
36-0005528	STOCK	STOCK		SW012
	WILDLIFE	INCIDENTAL		
36-0005529	STOCK	STOCK		SW010
	WILDLIFE	INCIDENTAL		
36-0005530	STOCK	STOCK		SW013
	WILDLIFE	INCIDENTAL		
36-0005531	STOCK	STOCK		SW014
	WILDLIFE	INCIDENTAL		
36-0005532	STOCK	STOCK		SW005
	WILDLIFE	INCIDENTAL		
36-0005533	STOCK	STOCK		SW015
	WILDLIFE	INCIDENTAL		
36-0005534	STOCK	CATALOGUED WELL		SW016
	WILDLIFE	INCIDENTAL		
36-0005535	STOCK	STOCK		SW017
	WILDLIFE	INCIDENTAL		
38-0070303	STOCK	STOCK		SP001
38-0070305	STOCK	STOCK		SP004
38-0070306	STOCK	STOCK		SP011
38-0070311	STOCK	STOCK		SP009
38-0070312	STOCK	NONE		
38-0070313	STOCK	STOCK		SP007

FILING NUMBER	USES CLAIMED OR REFERENCED	USES FOUND BY DWR	APPLIES TO DIVERSIONS	APPLIES TO PWR NUMBERS
38-0070315	STOCK	STOCK		SPO05
38-0070316	STOCK	STOCK		SPO03
38-0070317	STOCK	STOCK		SPO02
38-0070318	STOCK	STOCK		SPO08
38-0088499	STOCK	STOCK		SPO02
	WILDLIFE	INCIDENTAL		
38-0088504	STOCK	STOCK		SPO11
	WILDLIFE	INCIDENTAL		
38-0088505	STOCK	STOCK		SPO08
	WILDLIFE	INCIDENTAL		
38-0088524	STOCK	STOCK		SPO01
	WILDLIFE	INCIDENTAL		
38-0088567	STOCK	STOCK		SPO06
	WILDLIFE	INCIDENTAL		
38-0088572	STOCK	STOCK		SPO07
	WILDLIFE	INCIDENTAL		
38-0088575	STOCK	STOCK		SPO09
	WILDLIFE	INCIDENTAL		
38-0088596	STOCK	STOCK		SPO05
	WILDLIFE	INCIDENTAL		
38-0094601	STOCK	STOCK		SPO04
	WILDLIFE	INCIDENTAL		
38-0094602	STOCK	STOCK		SPO12
	WILDLIFE	INCIDENTAL		
38-0094603	STOCK	STOCK		SPO10
	WILDLIFE	INCIDENTAL		
39-0002410	STOCK	STOCK		SPO11
39-0002411	STOCK	STOCK		SPO07
39-0002412	STOCK	STOCK		SPO09
39-0002413	STOCK	STOCK		SPO01
39-0002414	STOCK	STOCK		SPO04
39-0002415	STOCK	STOCK		SPO06
39-0002416	STOCK	STOCK		SPO03
39-0002417	STOCK	NONE		
39-0002418	STOCK	STOCK		SPO08
39-0007309	STOCK	STOCK		SPO01, SWO01
	WILDLIFE	INCIDENTAL		
39-0007310	STOCK	STOCK		SPO02, SWO02
	WILDLIFE	INCIDENTAL		
39-0007311	STOCK	STOCK		SPO03, SWO03
	WILDLIFE	INCIDENTAL		
39-0007312	STOCK	STOCK		SPO06, SWO06
	WILDLIFE	INCIDENTAL		
39-0007313	STOCK	STOCK		SPO07, SWO07
	WILDLIFE	INCIDENTAL		
39-0007314	STOCK	STOCK		SPO08, SWO08
	WILDLIFE	INCIDENTAL		
39-0007315	STOCK	STOCK		SPO05, SWO05
	WILDLIFE	INCIDENTAL		
39-0007316	STOCK	STOCK		SPO09, SWO09
	WILDLIFE	INCIDENTAL		
39-0007317	STOCK	STOCK		SPO11, SWO11
	WILDLIFE	INCIDENTAL		
39-0013282	STOCK	STOCK		SWO10
	WILDLIFE	INCIDENTAL		
39-0013294	STOCK	STOCK		SPO04, SWO04
	WILDLIFE	INCIDENTAL		
39-0013295	STOCK	STOCK		SWO12
	WILDLIFE	INCIDENTAL		
39-0013296	STOCK	STOCK		SWO10
	WILDLIFE	INCIDENTAL		
39-0013297	STOCK	STOCK		SWO13
	WILDLIFE	INCIDENTAL		
39-0013298	STOCK	STOCK		SWO14
	WILDLIFE	INCIDENTAL		
39-0013299	STOCK	STOCK		SPO12, SWO05
	WILDLIFE	INCIDENTAL		
39-0013300	STOCK	STOCK		SPO10, SWO15
	WILDLIFE	INCIDENTAL		
39-0013301	STOCK	STOCK		SWO16
	WILDLIFE	INCIDENTAL		
39-0013302	STOCK	STOCK		SWO17
	WILDLIFE	INCIDENTAL		

PWR #	SECTION	TWNP	RNGE	SUPPLIED BY DIVERSIONS	WATER SOURCES	PHOTO DATE	SOURCE CHANGE	FACILITY NAME
SW001	SWNNW33	110S	210E		SURFACE WATER		NO	INSTREAM USE
SW002	NWSENW34	110S	210E		SURFACE WATER		NO	INSTREAM USE
SW003	NWSWSW36	110S	210E		SURFACE WATER		NO	INSTREAM USE
SW004	SESWSE01	120S	210E		SURFACE WATER		NO	INSTREAM USE
SW005	NWSENW03	120S	210E		SURFACE WATER		NO	INSTREAM USE
SW006	NWNNWNE03	120S	210E		SURFACE WATER		NO	INSTREAM USE
SW007	SESWNW34	110S	210E		SURFACE WATER		NO	INSTREAM USE
SW008	NWNNWSW05	120S	210E		SURFACE WATER		NO	INSTREAM USE
SW009	SWSNW11	120S	210E		SURFACE WATER		NO	INSTREAM USE
SW010	NWNNWNE32	110S	210E		SURFACE WATER		NO	INSTREAM USE
SW011	SWSWSE10	120S	210E		SURFACE WATER		NO	INSTREAM USE
SW012	NENESW12	120S	210E		SURFACE WATER		NO	INSTREAM USE
SW013	NWNNWNE05	120S	210E		SURFACE WATER		NO	INSTREAM USE
SW014	NESWSE03	120S	210E		SURFACE WATER		NO	INSTREAM USE
SW015	NWSWNE14	120S	210E		SURFACE WATER		NO	INSTREAM USE
SW016	SENESE14	120S	210E		SURFACE WATER		NO	INSTREAM USE
SW017	SENNW16	120S	210E		SURFACE WATER		NO	INSTREAM USE

R E S E R V O I R S

PWR #	SECTION	TWNP	RNGE	SUPPLIED BY DIVERSIONS	WATER SOURCES	PHOTO DATE	RESERVOIR NAME	STORAGE PURPOSE
SPO01	NWNNWSE33	110S	210E		SURFACE WATER	1972	BURRO TANK	STOCKWATERING WILDLIFE
SPO02	SESWNW34	110S	210E		SURFACE WATER	1972	BROKEN TANK	STOCKWATERING WILDLIFE
SPO03	SENESEW35	110S	210E		SURFACE WATER	1972	WHALEN TANK	STOCKWATERING WILDLIFE
SPO04	SESWSW01	120S	210E		SURFACE WATER	1972	ANTELOPE	STOCKWATERING WILDLIFE
SPO05	SWNNWNE09	120S	210E		SURFACE WATER	1984	NEW BIG MONEY TANK	STOCKWATERING WILDLIFE
SPO06	NESENE03	120S	210E		SURFACE WATER	1972	MOCHO TANK	STOCKWATERING
SPO07	NESENW04	120S	210E		SURFACE WATER	1972	BAILEY TANK	STOCKWATERING WILDLIFE
SPO08	SWSWSE05	120S	210E		SURFACE WATER	1972	TENIJA BLANCA	STOCKWATERING WILDLIFE
SPO09	SESENE10	120S	210E		SURFACE WATER	1972	BROKEN CABLE TANK	STOCKWATERING WILDLIFE
SPO10	SESESW11	120S	210E		SURFACE WATER	1972	UNNAMED	STOCKWATERING
SPO11	NWNESE15	120S	210E		SURFACE WATER	1972	DEER TANK	STOCKWATERING WILDLIFE
SPO12	SENNW09	120S	210E		SURFACE WATER	1972	OLD BIG MONEY TANK	STOCKWATERING WILDLIFE

P W R S U M M A R Y

PWR #	APPLICABLE ADJ FILINGS	APPLICABLE PRE FILINGS	*APPARENT FIRST USE DATE* DATE BASIS FOR DATE	WATER SOURCES AND CLASSIFICATIONS
SPO01	39-0002413 39-0007309	38-0070303 38-0088524	1947 38-70303 & 38-88524	SURFACE WATER: SAN PEDRO RIVER
SPO02	39-0007310	38-0070317 38-0088499	1949 38-70317 & 38-88499	SURFACE WATER: SAN PEDRO RIVER
SPO03	39-0002416 39-0007311	38-0070316	1925 FILING 38-70316	SURFACE WATER: SAN PEDRO RIVER
SPO04	39-0002414 39-0013294	38-0070305 38-0094601	1948 FILING 38-70305	SURFACE WATER: SAN PEDRO RIVER
SPO05	39-0007315	38-0070315 38-0088596	1976 FILING 38-88596	SURFACE WATER: SAN PEDRO RIVER
SPO06	39-0002415 39-0007312	38-0088567	1968 FILING 38-88567	SURFACE WATER: SAN PEDRO RIVER
SPO07	39-0002411 39-0007313	38-0070313 38-0088572	1968 38-70313 & 38-88572	SURFACE WATER: SAN PEDRO RIVER
SPO08	39-0002418 39-0007314	38-0070318 38-0088505	1972 1972 AERIAL PHOTO	SURFACE WATER: SAN PEDRO RIVER
SPO09	39-0002412 39-0007316	38-0070311 38-0088575	1958 38-70311 & 38-88575	SURFACE WATER: SAN PEDRO RIVER
SPO10	39-0013300	38-0094603	1947 FILING 38-94603	SURFACE WATER: SAN PEDRO RIVER
SPO11	39-0002410	38-0070306	1947 38-70306 & 38-88504	SURFACE WATER: SAN PEDRO RIVER

PWR #	APPLICABLE ADJ FILINGS	APPLICABLE PRE FILINGS	*APPARENT FIRST USE DATE* DATE BASIS FOR DATE	WATER SOURCES AND CLASSIFICATIONS
SPO11	39-0007317	38-0088504		
SPO12	39-0013299	38-0094602	1952 FILING 38-94602	SURFACE WATER: SAN PEDRO RIVER
SW001	39-0007309	36-0004750	1884 FILING 36-4750	SURFACE WATER: SAN PEDRO RIVER
SW002	39-0007310	36-0004749	1884 FILING 36-4749	SURFACE WATER: SAN PEDRO RIVER
SW003	39-0007311	36-0004748	1884 FILING 36-4748	SURFACE WATER: SAN PEDRO RIVER
SW004	39-0013294	36-0005527	1884 FILING 36-5527	SURFACE WATER: SAN PEDRO RIVER
SW005	39-0007315	36-0004744	1884 FILING 36-4744	SURFACE WATER: SAN PEDRO RIVER
	39-0013299	36-0005532		
SW006	39-0007312	36-0004747	1884 FILING 36-4747	SURFACE WATER: SAN PEDRO RIVER
SW007	39-0007313	36-0004746	1884 FILING 36-4746	SURFACE WATER: SAN PEDRO RIVER
SW008	39-0007314	36-0004745	1884 FILING 36-4745	SURFACE WATER: SAN PEDRO RIVER
SW009	39-0007316	36-0004743	1884 FILING 36-4743	SURFACE WATER: SAN PEDRO RIVER
SW010	39-0013282	36-0005515	1884 FILING 36-5515	SURFACE WATER: SAN PEDRO RIVER
	39-0013296	36-0005529		
SW011	39-0007317	36-0004742	1884 FILING 36-4742	SURFACE WATER: SAN PEDRO RIVER
SW012	39-0013295	36-0005528	1884 FILING 36-5528	SURFACE WATER: SAN PEDRO RIVER
SW013	39-0013297	36-0005530	1884 FILING 36-5530	SURFACE WATER: SAN PEDRO RIVER
SW014	39-0013298	36-0005531	1884 FILING 36-5531	SURFACE WATER: SAN PEDRO RIVER
SW015	39-0013300	36-0005533	1884 FILING 36-5533	SURFACE WATER: SAN PEDRO RIVER
SW016	39-0013301	36-0005534	1884 FILING 36-5534	SURFACE WATER: SAN PEDRO RIVER
SW017	39-0013302	36-0005535	1884 FILING 36-5535	SURFACE WATER: SAN PEDRO RIVER
NONE	39-0002417	10-0224452.1100		
		10-0226593.1100		
		10-0227063.1100		
		10-0227167.1100		
		10-0227168.1100		
		10-0228430.1100		
		38-0070312		

Q U A N T I T I E S O F U S E

PWR #	QUANTIFICATION TYPE	ACRES	CROP TYPE	EFF	WATER DUTY	ESTIMATED VOLUME	REMARKS
SPO01	MAX. AREA/CAP	LT 2.0				LTE 15.0 AF	
SPO02	MAX. AREA/CAP	LT 2.0				LTE 15.0 AF	
SPO03	MAX. AREA/CAP	4.0				18.1 AF	
SPO04	MAX. AREA/CAP	LT 2.0				LTE 15.0 AF	
SPO05	MAX. AREA/CAP	LT 2.0				LTE 15.0 AF	
SPO06	MAX. AREA/CAP	LT 2.0				LTE 15.0 AF	
SPO07	MAX. AREA/CAP	LT 2.0				LTE 15.0 AF	
SPO08	MAX. AREA/CAP	4.7				33.5 AF	
SPO09	MAX. AREA/CAP	LT 2.0				LTE 15.0 AF	
SPO10	MAX. AREA/CAP	LT 2.0				LTE 15.0 AF	
SPO11	MAX. AREA/CAP	LT 2.0				LTE 15.0 AF	
SPO12	MAX. AREA/CAP	LT 2.0				LTE 15.0 AF	
SW001							SEE VOLUME 1 - GENERAL ASSESSMENT
SW002							SEE VOLUME 1 - GENERAL ASSESSMENT
SW003							SEE VOLUME 1 - GENERAL ASSESSMENT
SW004							SEE VOLUME 1 - GENERAL ASSESSMENT
SW005							SEE VOLUME 1 - GENERAL ASSESSMENT
SW006							SEE VOLUME 1 - GENERAL ASSESSMENT
SW007							SEE VOLUME 1 - GENERAL ASSESSMENT
SW008							SEE VOLUME 1 - GENERAL ASSESSMENT
SW009							SEE VOLUME 1 - GENERAL ASSESSMENT
SW010							SEE VOLUME 1 - GENERAL ASSESSMENT
SW011							SEE VOLUME 1 - GENERAL ASSESSMENT
SW012							SEE VOLUME 1 - GENERAL ASSESSMENT
SW013							SEE VOLUME 1 - GENERAL ASSESSMENT
SW014							SEE VOLUME 1 - GENERAL ASSESSMENT
SW015							SEE VOLUME 1 - GENERAL ASSESSMENT

PWR #	QUANTIFICATION TYPE	ACRES	CROP TYPE	EFF	WATER DUTY	ESTIMATED VOLUME	REMARKS
SW016							GENERAL ASSESSMENT SEE VOLUME 1 - GENERAL ASSESSMENT
SW017							GENERAL ASSESSMENT SEE VOLUME 1 - GENERAL ASSESSMENT

E X P L A N A T I O N

FILINGS AND DECREES

FILING 10-0224452-11 - CLAIMS IRRIGATION, STOCKWATERING, AND MINING WATER USES FROM SYCAMORE TANK. NO TANK WAS FOUND AT THE CLAIMED LOCATION.
 FILING 10-0226593-11 - CLAIMS IRRIGATION, DOMESTIC, STOCKWATERING, AND MINING WATER USES FROM BASS CANYON. NO WATER USES WERE FOUND AT THE CLAIMED LOCATION.
 FILING 10-0227063-11 - CLAIMS IRRIGATION, STOCKWATERING, AND MINING WATER USES FROM SYCAMORE SPRING. NO IRRIGATION OR MINING USES WERE FOUND AT THE CLAIMED LOCATION.
 FILINGS 10-0227167-11 & 10-0227168-11 - CLAIM IRRIGATION, DOMESTIC, AND STOCKWATERING USES FROM ROCKHOUSE CANYON. NO WATER USES WERE FOUND AT THE CLAIMED LOCATION.
 FILINGS 38-70312 & 39-2417 - CLAIM STOCKWATERING USES. NO STOCKWATERING USES WERE FOUND AT THE CLAIMED LOCATION.

USES AND RESERVOIRS

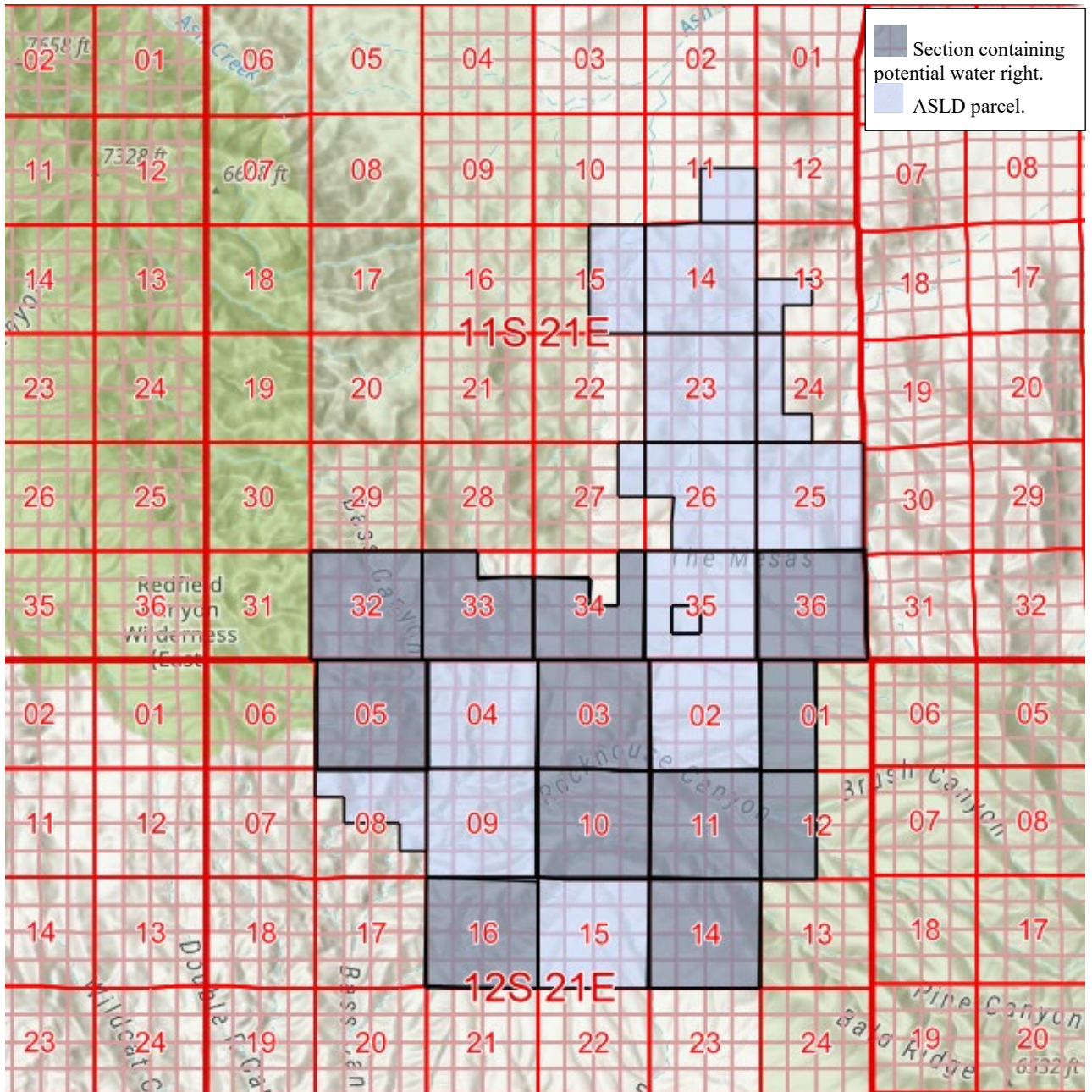
SP1 - BURRO TANK STOCKPOND.
 SP2 - BORKEN TANK STOCKPOND.
 SP3 - WHALEN TANK STOCKPOND.
 SP4 - ANTELOPE STOCKPOND.
 SP5 - NEW BIG MONEY TANK STOCKPOND.
 SP6 - MOCHO TANK STOCKPOND.
 SP7 - BAILEY TANK STOCKPOND.
 SP8 - TENIJA BLANCA STOCKPOND.
 SP9 - BROKEN CABLE TANK STOCKPOND.
 SP10 - UNNAMED STOCKPOND.
 SP11 - DEER TANK STOCKPOND.
 SP12 - OLD BIG MONEY TANK STOCKPOND.
 SW1 - INSTREAM STOCKWATERING AND WILDLIFE USES FROM BURRO WASH.
 SW2 - INSTREAM STOCKWATERING AND WILDLIFE USES FROM BROKEN WASH.
 SW3 - INSTREAM STOCKWATERING AND WILDLIFE USES FROM WHALEN TANK DRAW.
 SW4 - INSTREAM STOCKWATERING AND WILDLIFE USES FROM ANTELOPE WASH.
 SW5 - INSTREAM STOCKWATERING AND WILDLIFE USES FROM MONEY WASH.
 SW6 - INSTREAM STOCKWATERING AND WILDLIFE USES FROM MOCHO WASH.
 SW7 - INSTREAM STOCKWATERING AND WILDLIFE USES FROM BAILEY WASH.
 SW8 - INSTREAM STOCKWATERING AND WILDLIFE USES FROM REDUS CANYON.
 SW9 - INSTREAM STOCKWATERING AND WILDLIFE USES FROM BROKEN CABLE WASH.
 SW10 - INSTREAM STOCKWATERING AND WILDLIFE USES FROM BASS CANYON.
 SW11 - INSTREAM STOCKWATERING AND WILDLIFE USES FROM N BAR O CANYON.
 SW12 - INSTREAM STOCKWATERING AND WILDLIFE USES FROM ROCK HOUSE CANYON.
 SW13 - INSTREAM STOCKWATERING AND WILDLIFE USES FROM DEAD COW CANYON.
 SW14 - INSTREAM STOCKWATERING AND WILDLIFE USES FROM SPRINGS WASH.
 SW15 - INSTREAM STOCKWATERING AND WILDLIFE USES FROM PALLISADES WASH.
 SW16 - INSTREAM STOCKWATERING AND WILDLIFE USES FROM PINE CANYON.
 SW17 - INSTREAM STOCKWATERING AND WILDLIFE USES FROM BAD LUCK WASH.

DISPOSITION OF LAND OWNER/CLAIMANT COMMENTS

COMMENTS WERE RECEIVED FROM THE LAND OWNER ON THE DISPOSITION OF FILINGS IN THIS W.F.R.

ATTACHMENT C

Arizona State Land Department Parcel Map



ATTACHMENT D

Initial Court-Approved Mailing List

Arizona Department of Water Resources Karen J. Nielsen 1110 West Washington, Suite 310 Phoenix, AZ 85007	Joe P. Sparks and Laurel A. Hermann The Sparks Law Firm, P.C. 7503 First Street Scottsdale, AZ 85251-4573
Clerk of the Superior Court Maricopa County Attn: Water Case 601 West Jackson St. Phoenix, AZ 85003	Jeremiah Weiner, Brett J. Stavin, Rosette, LLP. 120 S. Ash Avenue, Suite 201 Tempe, AZ 85281
Special Master Sherri Zendri Superior Court of Arizona 201 W. Jefferson Street Courtroom 301 Phoenix, AZ 85003	Susan B. Montgomery, Robyn Interpreter, Montgomery & Interpreter PLC 3301 E Thunderbird Road Phoenix, AZ 85032
David Jacobs, Kevin Crestin, & Eric Wilkins Arizona Attorney General Natural Resources Section 2005 North Central Phoenix, AZ 85004	Gila River Indian Community Javier Ramos and Michael Carter Office of the General Counsel P.O. Box 97 Sacaton, AZ 85147
Laura Boyer & Mark Widerschein United States Dept. of Justice – ENRD P.O. Box 7611, Ben Franklin Station Washington, DC 20044	Merrill C. Godfrey and Brette A. Pena Akin Gump Straus Hauer & Feld LLP 2001 K Street, N.W. Washington, DC 20006
Alexander B. Ritchie San Carlos Apache Tribe Office of the Attorney General PO Box 40 San Carlos, AZ 85550	Larsen Ranch Sunset Rt. Willcox, AZ 85643
	Broken Dipper Ranch c/o Rita L. Spears 522 W 1 st St. #107 Tempe, AZ 85281