

1  
2  
3  
4  
5  
6  
7  
8 IN THE SUPERIOR COURT OF THE STATE OF ARIZONA  
9 IN AND FOR THE COUNTY OF MARICOPA

10 IN RE: THE GENERAL ADJUDICATION  
11 OF ALL RIGHTS TO USE WATER IN  
12 THE GILA RIVER SYSTEM AND  
13 SOURCE

W-1, W-2, W-3, W-4 (Consolidated)

Contested Case Nos. W1-11-2708

13 **ORDER ON STIPULATION,  
14 WITHDRAWAL OF OBJECTIONS,  
15 MOTION TO APPROVE PROPOSED  
16 WATER RIGHT ABSTRACTS FOR  
17 HARTMAN FARMS, LLC, MOTION  
18 TO INCLUDE THE PROPOSED  
19 WATER RIGHT ABSTRACTS FOR  
20 HARTMAN FARMS, LLC IN THE  
21 CATALOG OF PROPOSED WATER  
22 RIGHTS, AND MOTION TO VACATE  
23 TRIAL**

19  
20 The Court has reviewed the June 20, 2025 Stipulation, Withdrawal of Objections,  
21 Motion to Approve Proposed Water Right Abstracts for Hartman Farms, LLC, Motion to  
22 Include the Proposed Water Right Abstracts for Hartman Farms, LLC in the Catalog of  
23 Proposed Water Rights, and Motion to Vacate Trial (the "Stipulation"), has found good  
24 cause, and has found no just reason for delay, therefore,


25 **IT IS HEREBY ORDERED:**

- 26 1. The Stipulation is enforceable in this Court according to its terms.  
27 2. The proposed irrigation, stockwatering, and domestic water right abstracts attached  
28 hereto as Appendix A are approved. The abstracts shall be included in a Catalog of

1 Proposed Water Rights created pursuant to § 15 of the Rules for Proceedings before  
2 the Special Master.

- 3 3. The Stipulation and this Order shall be binding upon the claimant, its successors and  
4 assigns.
- 5 4. Nothing in the Stipulation or this Order shall be used as precedent in any other  
6 contested case in the Adjudication proceedings. The bases of rights and priority  
7 dates set forth in the abstracts attached hereto as Appendix A, and the Parties'  
8 agreement to those bases of rights and priority dates, shall have no precedential  
9 effect with respect to any other claim in any other contested case, and neither the  
10 Stipulation nor this Order may be offered as evidence, submitted to any court, or  
11 referred to in writing or orally for any purpose in any other contested case.
- 12 5. The July 21, 2025 trial for this contested case is vacated.

13  
14  
15 Signed this 24<sup>th</sup> day of June, 2025.

16  
17  
18   
19 \_\_\_\_\_  
20 Special Water Master  
21 Sherri Zendri  
22  
23  
24  
25  
26  
27  
28

1  
2  
3  
4  
5  
6  
7  
8  
9  
10  
11  
12  
13  
14  
15  
16  
17  
18  
19  
20  
21  
22  
23  
24  
25  
26  
27  
28

**APPENDIX A**

# ABSTRACT OF WATER RIGHT

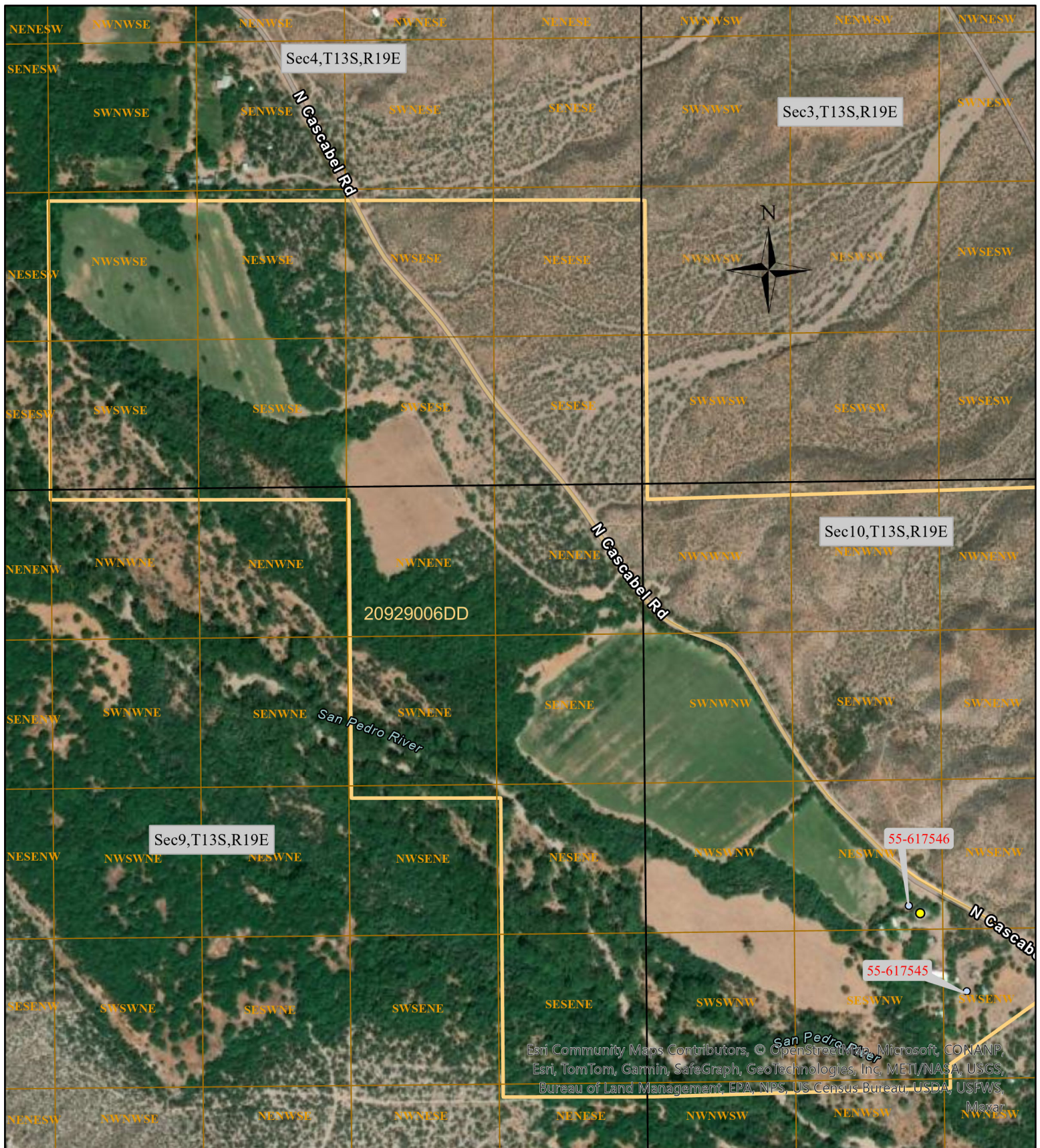
## San Pedro River Watershed

Hartman Farms, LLC Domestic Use DM001A		
1.	<b>Proposed Water Right.</b>	113-12-DBC-009-DM001A
2.	<b>Owner of Right.</b> <sup>A</sup>	Hartman Farms, LLC
3.	<b>Landowner.</b>	Hartman Farms, LLC
4.	<b>Statement of Claimant No.(s).</b>	39-175373
5.	<b>Statement of Claimant Name(s).</b>	Hartman Farms, LLC
6.	<b>Lessee or Permittee.</b>	None
7.	<b>Basis of Right.</b>	36-106408 36-106409
8.	<b>Beneficial Use.</b>	Domestic
9.	<b>Priority Date.</b>	December 31, 1950
10.	<b>Quantity.</b>	1 AFA (1 house)
11.	<b>Places of Use.</b>	One house and yard area: NE ¼ SW ¼ NW ¼, of Section 10, Township 13 South Range 19 East In the Gila and Salt River Base and Meridian Cochise County, Arizona <u>GPS Coordinates:</u> 32.32109 -110.39631

<b>Hartman Farms, LLC Domestic Use DM001A</b>		
<b>12.</b>	<b>Points of Diversion.</b>	<p><u>Well 55-617545 –</u>  SW ¼ SE ¼ NW ¼ Section 10, Township 13  South, Range 19 East  <u>GPS Coordinates:</u> 32.32018 -110.39566</p> <p><u>Well 55-617546 –</u>  NE ¼ SW ¼ NW ¼ Section 10, Township 13  South, Range 19 East  <u>GPS Coordinates:</u> 32.32106 -110.39642</p> <p>Both in the Gila and Salt River Base and  Meridian, Cochise County, Arizona</p>
<b>13.</b>	<b>Source of Water.</b>	Subflow from the San Pedro River

<sup>A</sup> This abstract of water right and accompanying stipulation entered into by the parties in *In re Norman G. and Barbara Y. Crawford* (W1-11-2708) are binding on Hartman Farms, LLC and its successors and assigns.





<ul style="list-style-type: none"> <li>○ Wells</li> <li>● House</li> <li>□ Sections</li> <li>□ QQQ</li> <li>□ APN</li> </ul> <div> <div>0.1</div> <div>Miles</div> </div>	<p>Contested Case No. W1-11-2708</p> <p>In re Norman G. and Barbara Y. Crawford</p> <p>Watershed File Report: 113-12-DBC-009</p> <p>Claimant: Hartman Farms, LLC</p> <p>Proposed Water Right: 113-12-DBC-009-DM001A</p>
---	---

# ABSTRACT OF WATER RIGHT

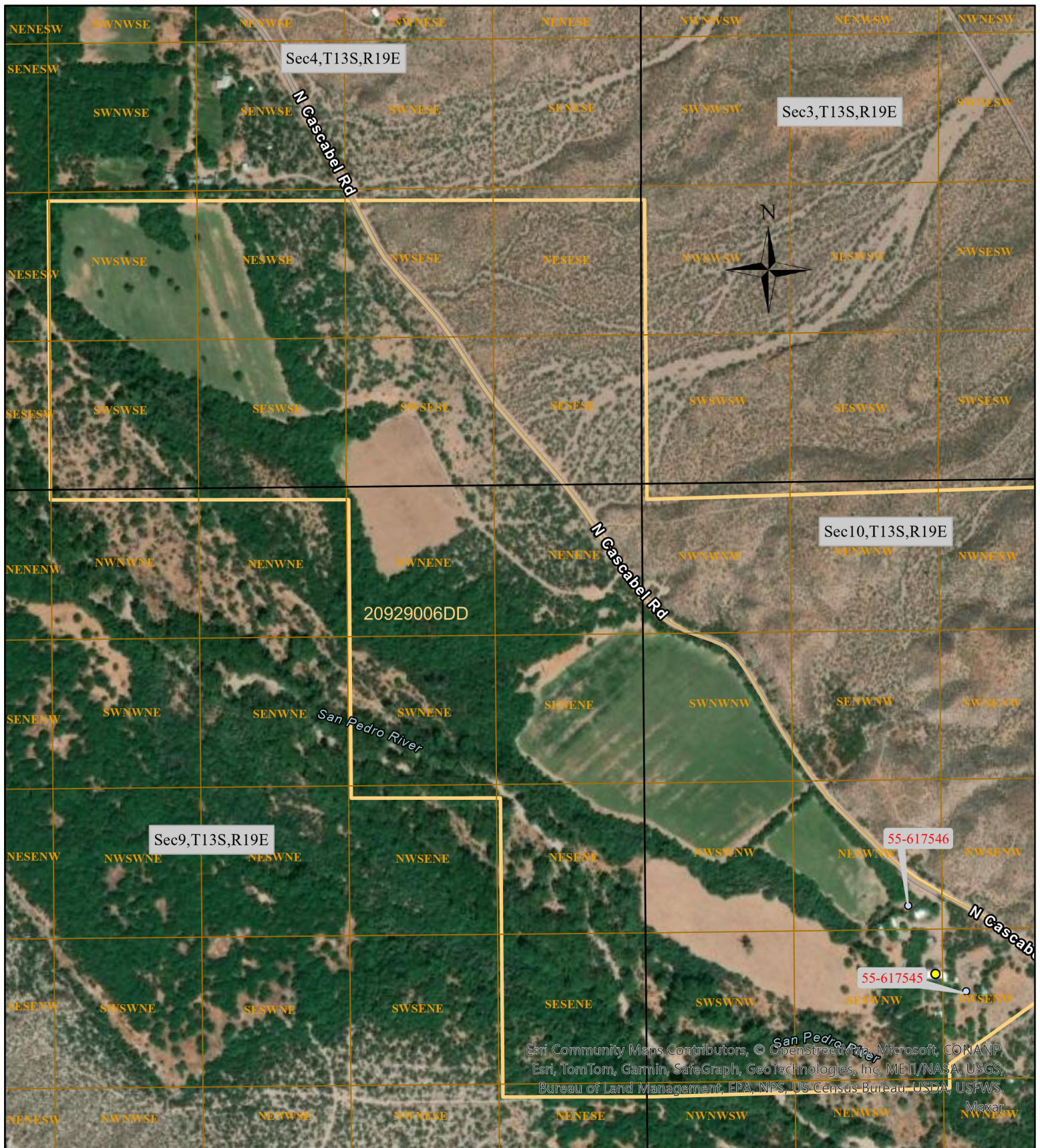
## San Pedro River Watershed

Hartman Farms, LLC Domestic Use DM001B		
1.	<b>Proposed Water Right.</b>	113-12-DBC-009-DM001B
2.	<b>Owner of Right.</b> <sup>A</sup>	Hartman Farms, LLC
3.	<b>Landowner.</b>	Hartman Farms, LLC
4.	<b>Statement of Claimant No.(s).</b>	39-175373
5.	<b>Statement of Claimant Name(s).</b>	Hartman Farms, LLC
6.	<b>Lessee or Permittee.</b>	None
7.	<b>Basis of Right.</b>	36-106408 36-106409
8.	<b>Beneficial Use.</b>	Domestic
9.	<b>Priority Date.</b>	December 31, 1950
10.	<b>Quantity.</b>	1 AFA (1 house)
11.	<b>Places of Use.</b>	One house and yard area: SE ¼ SW ¼ NW ¼ of Section 10, Township 13 South Range 19 East In the Gila and Salt River Base and Meridian Cochise County, Arizona <u>GPS Coordinates: 32.32035 -110.39608</u>
12.	<b>Points of Diversion.</b>	<u>Well 55-617545 –</u> SW ¼ SE ¼ NW ¼ Section 10, Township 13 South, Range 19 East <u>GPS Coordinates: 32.32018 -110.39566</u>

Hartman Farms, LLC Domestic Use DM001B		
		<p><u>Well 55-617546 –</u>  NE ¼ SW ¼ NW ¼ Section 10, Township 13  South, Range 19 East  <u>GPS Coordinates:</u> 32.32106 -110.39642</p> <p>Both in the Gila and Salt River Base and  Meridian, Cochise County, Arizona</p>
13.	<b>Source of Water.</b>	Subflow from the San Pedro River

<sup>A</sup> This abstract of water right and accompanying stipulation entered into by the parties in *In re Norman G. and Barbara Y. Crawford* (W1-11-2708) are binding on Hartman Farms, LLC and its successors and assigns.





<ul style="list-style-type: none"> <li>○ Wells</li> <li>● House</li> <li>□ Sections</li> <li>□ QQQ</li> <li>□ APN</li> </ul> <div style="text-align: center;"> <p>0.1</p> <p>□ Miles</p> </div>	<p>Contested Case No. W1-11-2708</p> <p>In re Norman G. and Barbara Y. Crawford</p> <p>Watershed File Report: 113-12-DBC-009</p> <p>Claimant: Hartman Farms, LLC</p> <p>Proposed Water Right: 113-12-DBC-009-DM001B</p>
---	---

# ABSTRACT OF WATER RIGHT

## San Pedro River Watershed

Hartman Farms, LLC Stockwatering Use SW001		
1.	Proposed Water Right.	113-12-DBC-009-SW001
2.	Owner of Right. <sup>A</sup>	Hartman Farms, LLC
3.	Landowner.	Hartman Farms, LLC
4.	Statement of Claimant No.(s).	39-175375
5.	Statement of Claimant Name(s).	Hartman Farms, LLC
6.	Lessee or Permittee.	None
7.	Basis of Right.	36-106408 36-106409 36-106410 36-106412
8.	Beneficial Use.	Stockwatering
9.	Priority Date.	December 31, 1950
10.	Quantity.	1 AFA
11.	Places of Use. <sup>B</sup>	<p>NE ¼ SW ¼ NW ¼, SW ¼ SE ¼ NW ¼, and SE ¼ SW ¼ NW ¼ of Section 10, Township 13 South, Range 19 East</p> <p>NE ¼ NE ¼ NE ¼, of Section 9, Township 13 South, Range 19 East</p> <p>SE ¼ SW ¼ SE ¼, of Section 4, Township 13 South, Range 19 East.</p> <p>All in the Gila and Salt River Base and Meridian Cochise County, Arizona</p>

## Hartman Farms, LLC Stockwatering Use SW001

		<p><u>San Pedro River –</u></p> <p>NW <math>\frac{1}{4}</math> SW <math>\frac{1}{4}</math> SE <math>\frac{1}{4}</math>, SW <math>\frac{1}{4}</math> SW <math>\frac{1}{4}</math> SE <math>\frac{1}{4}</math>, and SE <math>\frac{1}{4}</math> SW <math>\frac{1}{4}</math> SE <math>\frac{1}{4}</math> of Section 4, Township 13 South, Range 19 East.</p> <p>SW <math>\frac{1}{4}</math> NE <math>\frac{1}{4}</math> NE <math>\frac{1}{4}</math>, SE <math>\frac{1}{4}</math> NE <math>\frac{1}{4}</math> NE <math>\frac{1}{4}</math>, NE <math>\frac{1}{4}</math> SE <math>\frac{1}{4}</math> NE <math>\frac{1}{4}</math>, and SE <math>\frac{1}{4}</math> SE <math>\frac{1}{4}</math> NE <math>\frac{1}{4}</math> of Section 9, Township 13 South, Range 19 East</p> <p>SW <math>\frac{1}{4}</math> SW <math>\frac{1}{4}</math> NW <math>\frac{1}{4}</math>, and SE <math>\frac{1}{4}</math> SW <math>\frac{1}{4}</math> NW <math>\frac{1}{4}</math> of Section 10, Township 13 South, Range 19 East</p> <p>All in the Gila and Salt River Base and Meridian Cochise County, Arizona</p>
12.	<b>Points of Diversion.</b>	<p><u>Well 55-617543 –</u> SE <math>\frac{1}{4}</math> SW <math>\frac{1}{4}</math> NW <math>\frac{1}{4}</math> of Section 10, Township 13 South, Range 19 East <u>GPS Coordinates:</u> 32.32076 -110.39717</p> <p><u>Well 55-617544 –</u> SW <math>\frac{1}{4}</math> SE <math>\frac{1}{4}</math> SE <math>\frac{1}{4}</math> of Section 4, Township 13 South, Range 19 East <u>GPS Coordinates:</u> 32.32697 -110.40422</p> <p><u>Well 55-617545 –</u> SW <math>\frac{1}{4}</math> SE <math>\frac{1}{4}</math> NW <math>\frac{1}{4}</math> Section 10, Township 13 South, Range 19 East <u>GPS Coordinates:</u> 32.32018 -110.39566</p>

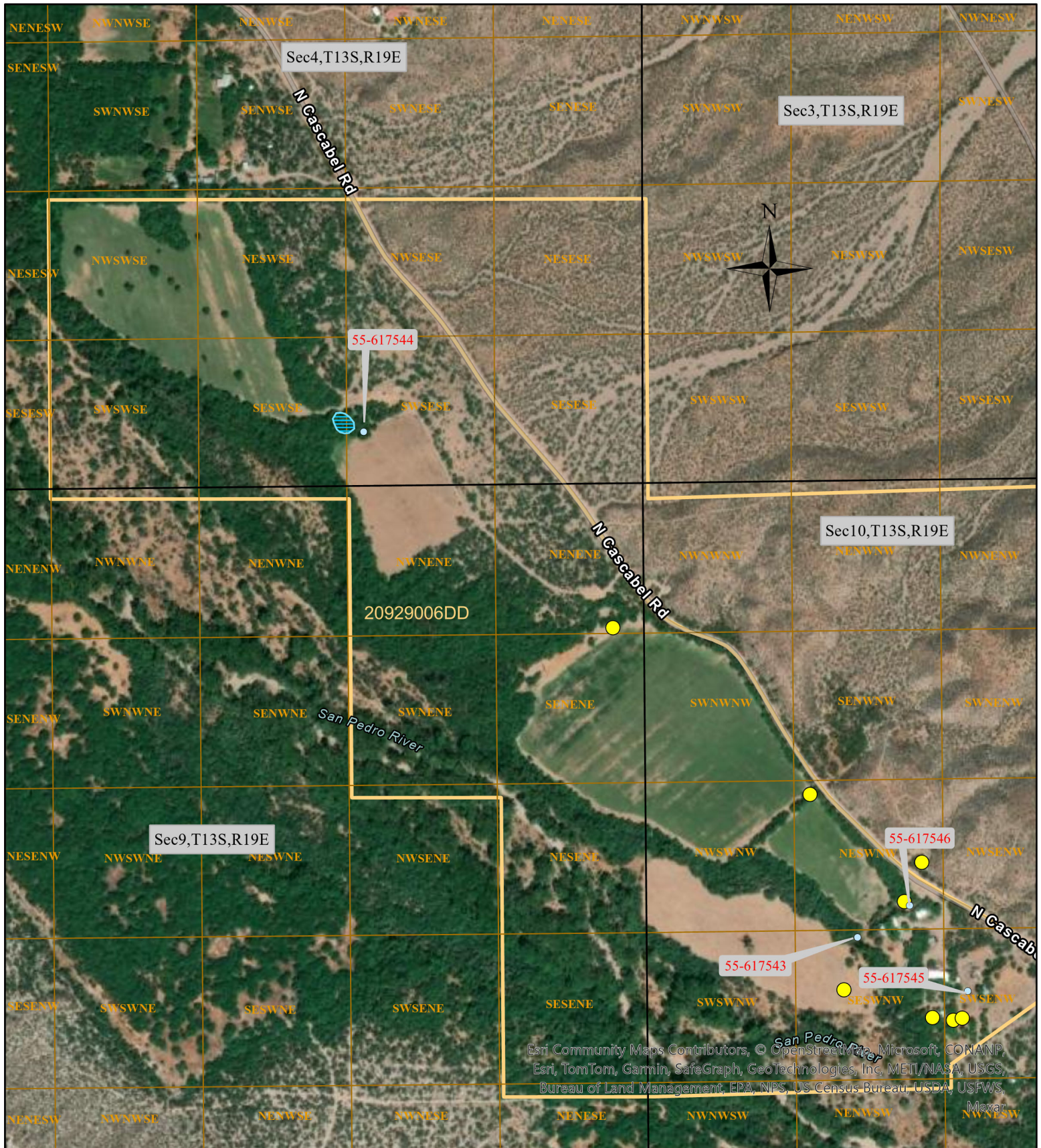


<b>Hartman Farms, LLC Stockwatering Use SW001</b>		
		<p><u>Well 55-617546 –</u>  NE ¼ SW ¼ NW ¼ Section 10, Township 13  South, Range 19 East  <u>GPS Coordinates:</u> 32.32106 -110.39642</p> <p><u>San Pedro River –</u></p> <p>NW ¼ SW ¼ SE ¼,  SW ¼ SW ¼ SE ¼, and  SE ¼ SW ¼ SE ¼ of Section 4, Township  13 South, Range 19 East.</p> <p>SW ¼ NE ¼ NE ¼,  SE ¼ NE ¼ NE ¼,  NE ¼ SE ¼ NE ¼, and  SE ¼ SE ¼ NE ¼ of Section 9, Township 13  South, Range 19 East</p> <p>SW ¼ SW ¼ NW ¼, and  SE ¼ SW ¼ NW ¼ of Section 10, Township  13 South, Range 19 East</p> <p>All in the Gila and Salt River Base and Meridian  Cochise County, Arizona</p>
<b>13.</b>	<b>Source of Water.</b>	<p>San Pedro River  Subflow from the San Pedro River</p>

---

<sup>A</sup> This abstract of water right and accompanying stipulation entered into by the parties in *In re Norman G. and Barbara Y. Crawford* (W1-11-2708) are binding on Hartman Farms, LLC and its successors and assigns.

<sup>B</sup> See map and coordinates below for stockwatering locations including the stockwatering and irrigation regulatory reservoir and stockwatering troughs. The reservoir's volume capacity is also listed below. The reservoir is fed directly from well 55-617544. The stockwatering troughs are fed directly by wells 55-617543, 55-617545, and 55-617546.



- Stockwatering\_Troughs
- ▨ Reservoir
- Wells
- Sections
- QQQ
- APN

0.1  
Miles

Contested Case No. W1-11-2708

In re Norman G. and Barbara Y. Crawford

Watershed File Report: 113-12-DBC-009

Claimant: Hartman Farms, LLC

Proposed Water Right: 113-12-DBC-009-SW001

## Stockwatering Troughs Coordinates

Y	X
32.321703	-110.396302
32.320163	-110.397424
32.327181	-110.404500
32.324573	-110.400694
32.319821	-110.396161
32.319787	-110.395865
32.319812	-110.395737
32.321228	-110.396554
32.322533	-110.397892

## Reservoir

Volume Capacity: .49 AF

Coordinates:

Y	X
32.327183	-110.404501
32.327142	-110.404438
32.327076	-110.404376
32.327001	-110.404371
32.326950	-110.404447
32.326945	-110.404508
32.326959	-110.404573
32.326994	-110.404620
32.327066	-110.404659
32.327122	-110.404677
32.327190	-110.404629
32.327198	-110.404567
32.327183	-110.404501



# ABSTRACT OF WATER RIGHT

## San Pedro River Watershed

Hartman Farms, LLC Irrigation Use IR090A		
1.	<b>Proposed Water Right.</b> <sup>A</sup>	113-12-DBC-009-IR090A
2.	<b>Owner of Right.</b> <sup>B</sup>	Hartman Farms, LLC
3.	<b>Landowner.</b>	Hartman Farms, LLC
4.	<b>Statement of Claimant No.(s).</b>	39-175374
5.	<b>Statement of Claimant Name(s).</b>	Hartman Farms, LLC
6.	<b>Lessee or Permittee.</b>	None
7.	<b>Basis of Right.</b>	36-106410 36-106412
8.	<b>Beneficial Use.</b>	Irrigation
9.	<b>Priority Date.</b>	December 31, 1950
10.	<b>Quantity.</b>	140.11 AFA (19.46 Acres) Irrigation water duty: 7.20 AF/acre Maximum diversion rate 2 CFS
11.	<b>Places of Use.</b> <sup>C</sup>	NW ¼ NE ¼ NE ¼, of Section 9, Township 13 South, Range 19 East  NW ¼ SW ¼ SE ¼, NE ¼ SW ¼ SE ¼, SE ¼ SW ¼ SE ¼, SW ¼ SW ¼ SE ¼, SW ¼ SE ¼ SE ¼ of Section 4, Township 13 South, Range 19 East  Both in the Gila and Salt River Base and Meridian Cochise County, Arizona
12.	<b>Points of Diversion.</b> <sup>D</sup>	<u>Well 55-617544 –</u> SW ¼ SE ¼ SE ¼ of Section 4, Township 13 South, Range 19 East In the Gila and Salt River Base and Meridian Cochise County, Arizona  <u>GPS Coordinates:</u> 32.32697 -110.40422

Hartman Farms, LLC Irrigation Use IR090A		
13.	Source of Water.	Subflow from the San Pedro River

---

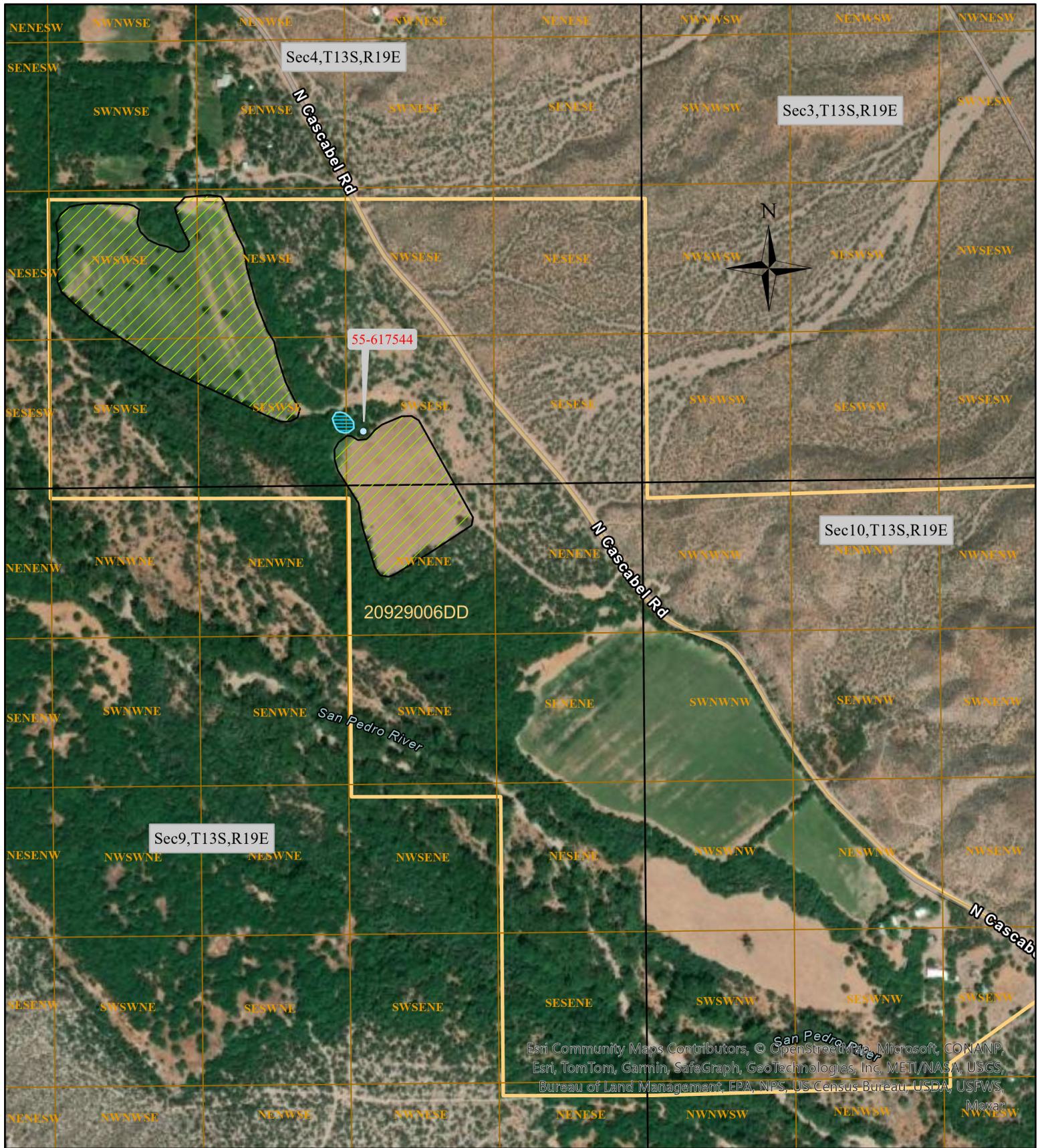
<sup>A</sup> PWR 113-12-DBC-009-IR090 is split between two areas with separate priority dates. To facilitate understanding, Claimant has named the areas 113-12-DBC-009-IR090A and 113-12-DBC-009-IR090B. 113-12-DBC-009-IR090B is addressed in a separate abstract.







<sup>B</sup> This abstract of water right and accompanying stipulation entered into by the parties in *In re Norman G. and Barbara Y. Crawford* (W1-11-2708) are binding on Hartman Farms, LLC and its successors and assigns.

<sup>C</sup> See ATTACHMENT A consisting of a map and coordinates for places of use and a stockwatering and irrigation regulatory reservoir. The reservoir's volume capacity is also listed below.

<sup>D</sup> See ATTACHMENT A.





-  Irrigation
-  Reservoir
-  Well
-  Sections
-  QQQ
-  APN

0.1  
Miles

Contested Case No. W1-11-2708

In re Norman G. and Barbara Y. Crawford

Watershed File Report: 113-12-DBC-009

Claimant: Hartman Farms, LLC

Proposed Water Right: 113-12-DBC-009-IR090A

## Field 19

-110.408215	32.329737	-110.405346	32.327568
-110.407941	32.329744	-110.405212	32.327333
-110.407582	32.329733	-110.405140	32.327238
-110.407496	32.329709	-110.405176	32.327135
-110.407421	32.329666	-110.405276	32.327091
-110.407451	32.329504	-110.405353	32.327084
-110.407409	32.329401	-110.405428	32.327088
-110.407295	32.329298	-110.405690	32.327187
-110.407146	32.329239	-110.406022	32.327327
-110.407025	32.329216	-110.406363	32.327464
-110.406882	32.329151	-110.406842	32.327650
-110.406788	32.329158	-110.407152	32.327788
-110.406715	32.329221	-110.407494	32.328002
-110.406716	32.329271	-110.407745	32.328138
-110.406770	32.329356	-110.408063	32.328313
-110.406840	32.329483	-110.408378	32.328540
-110.406890	32.329609	-110.408539	32.328672
-110.406912	32.329685	-110.408596	32.328795
-110.406766	32.329813	-110.408596	32.328926
-110.406603	32.329826	-110.408607	32.329078
-110.406411	32.329837	-110.408577	32.329255
-110.406252	32.329818	-110.408597	32.329414
-110.406203	32.329754	-110.408613	32.329506
-110.406188	32.329719	-110.408541	32.329619
-110.406132	32.329565	-110.408412	32.329706
-110.406018	32.329340	-110.408215	32.329737
-110.405938	32.329207		
-110.405910	32.329104		
-110.405890	32.328952		
-110.405825	32.328744		
-110.405760	32.328531		
-110.405600	32.328184		
-110.405505	32.328056		
-110.405464	32.327890		



**Vineyard**

-110.40447	32.32631
-110.40460	32.32649
-110.40465	32.32662
-110.40465	32.32674
-110.40460	32.32683
-110.40447	32.32691
-110.40441	32.32691
-110.40431	32.32686
-110.40419	32.32687
-110.40414	32.32691
-110.40408	32.32697
-110.40397	32.32704
-110.40369	32.32714
-110.40355	32.32715
-110.40344	32.32709
-110.40294	32.32631
-110.40268	32.32591
-110.40270	32.32582
-110.40281	32.32575
-110.40331	32.32548
-110.40380	32.32523
-110.40389	32.32520
-110.40401	32.32522
-110.40408	32.32531
-110.40419	32.32563
-110.40425	32.32578
-110.40427	32.32588
-110.40429	32.32598
-110.40431	32.32609

**Reservoir**

Volume Capacity: .49 AF

Coordinates:

-110.404501	32.327183
-110.404438	32.327142
-110.404376	32.327076
-110.404371	32.327001
-110.404447	32.326950
-110.404508	32.326945
-110.404573	32.326959
-110.404620	32.326994
-110.404659	32.327066
-110.404677	32.327122
-110.404629	32.327190
-110.404567	32.327198
-110.404501	32.327183

# ABSTRACT OF WATER RIGHT

## San Pedro River Watershed

Hartman Farms, LLC Irrigation Use IR090B		
1.	Proposed Water Right. <sup>A</sup>	113-12-DBC-009-IR090B
2.	Owner of Right. <sup>B</sup>	Hartman Farms, LLC
3.	Landowner.	Hartman Farms, LLC
4.	Statement of Claimant No.(s).	39-175374
5.	Statement of Claimant Name(s).	Hartman Farms, LLC
6.	Lessee or Permittee.	None
7.	Basis of Right.	36-106410
8.	Beneficial Use.	Irrigation
9.	Priority Date.	December 31, 1954
10.	Quantity.	165.67 AFA (23.01 Acres) Irrigation water duty: 7.20 AF/acre Maximum diversion rate 2 CFS
11.	Places of Use. <sup>C</sup>	NE ¼ NE ¼ NE ¼, SE ¼ NE ¼ NE ¼, NE ¼ SE ¼ NE ¼ of Section 9, Township 13 South, Range 19 East  NW ¼ NW ¼ NW ¼, SW ¼ NW ¼ NW ¼, SE ¼ NW ¼ NW ¼, NW ¼ SW ¼ NW ¼, NE ¼ SW ¼ NW ¼ of Section 10, Township 13 South, Range 19 East  All in the Gila and Salt River Base and Meridian Cochise County, Arizona



<b>Hartman Farms, LLC Irrigation Use IR090B</b>		
<b>12.</b>	<b>Points of Diversion.</b> <sup>D</sup>	<u>Well 55-617543 –</u> SE ¼ SW ¼ NW ¼ of Section 10, Township 13 South, Range 19 East <u>GPS Coordinates:</u> 32.32076 -110.39717  In the Gila and Salt River Base and Meridian Cochise County, Arizona
<b>13.</b>	<b>Source of Water.</b>	Subflow from the San Pedro River

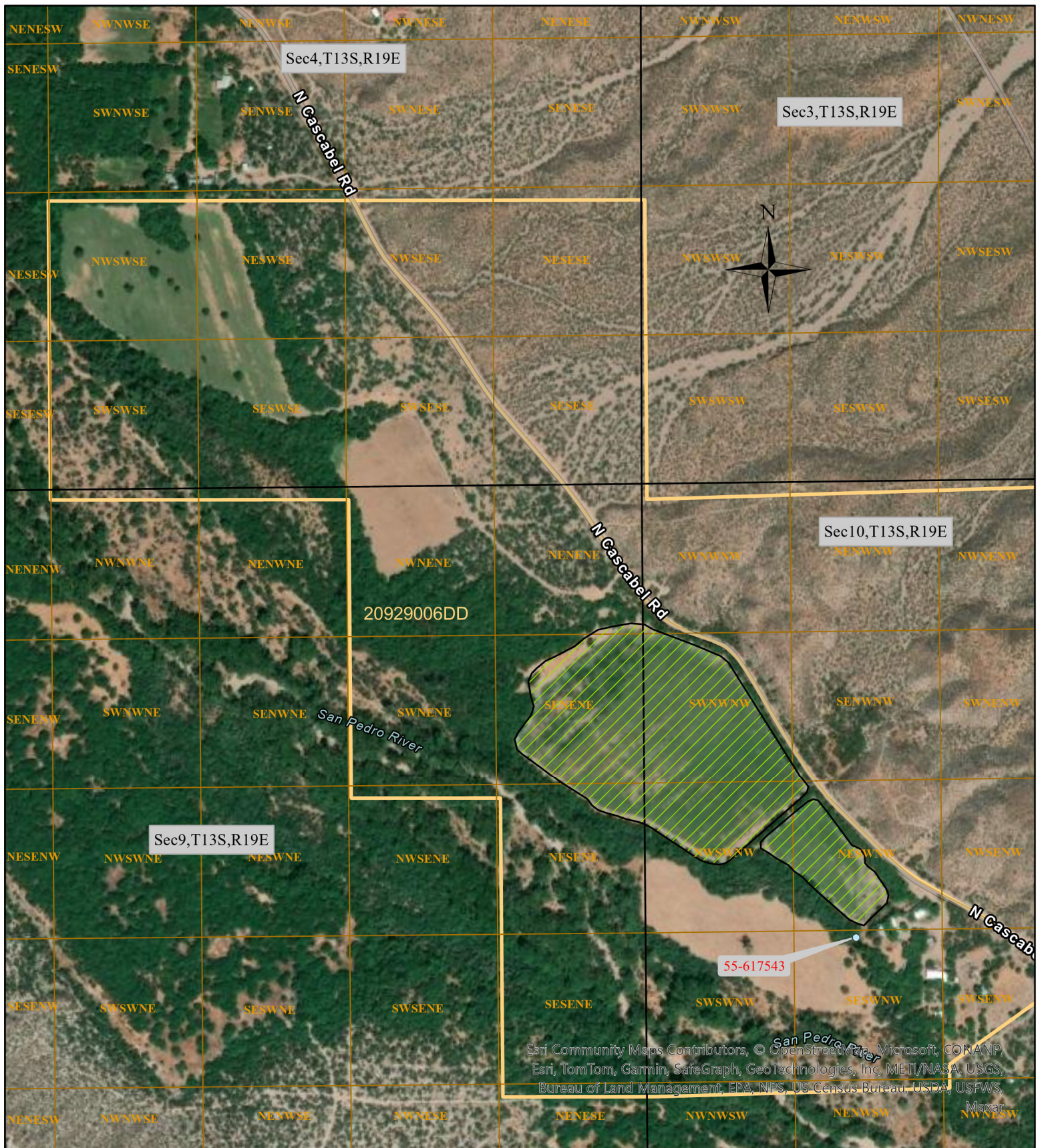
---

<sup>A</sup> PWR 113-12-DBC-009-IR090 is split between two areas with separate priority dates. To facilitate understanding, Claimant has named the areas 113-12-DBC-009-IR090A and 113-12-DBC-009-IR090B. 113-12-DBC-009-IR090A is addressed in a separate abstract.

<sup>B</sup> This abstract of water right and accompanying stipulation entered into by the parties in *In re Norman G. and Barbara Y. Crawford* (W1-11-2708) are binding on Hartman Farms, LLC and its successors and assigns.

<sup>C</sup> See ATTACHMENT A consisting of a map and its accompanying GPS coordinates for the irrigated areas.

<sup>D</sup> See ATTACHMENT A.



<ul style="list-style-type: none"> <li>Well</li> <li>Irrigation_Acreage</li> <li>Sections</li> <li>QQQ</li> <li>APN</li> </ul> <p>0.1 Miles</p>	<p>Contested Case No. W1-11-2708</p> <p>In re Norman G. and Barbara Y. Crawford</p> <p>Watershed File Report: 113-12-DBC-009</p> <p>Claimant: Hartman Farms, LLC</p> <p>Proposed Water Right: 113-12-DBC-009-IR090B</p>
---	---

## Nursery

-110.398482	32.32205
-110.398256	32.322209
-110.398058	32.32235
-110.397903	32.322453
-110.397823	32.32248
-110.397759	32.322464
-110.397637	32.322335
-110.397278	32.321919
-110.397162	32.321875
-110.397097	32.321796
-110.397093	32.321701
-110.39705	32.321658
-110.396958	32.321598
-110.396791	32.32139
-110.39676	32.32131
-110.396782	32.321215
-110.397028	32.321022
-110.397114	32.320943
-110.397191	32.320962
-110.397321	32.321014
-110.397785	32.321364
-110.397998	32.321543
-110.398102	32.321603
-110.398193	32.321684
-110.398363	32.321766
-110.398469	32.32183
-110.398581	32.321886
-110.398585	32.321958
-110.398537	32.322004



## Hunting Field

-110.399080	32.321703
-110.399178	32.321687
-110.399309	32.321704
-110.399436	32.321741
-110.400044	32.322085
-110.400112	32.322127
-110.400231	32.322186
-110.400322	32.322210
-110.400496	32.322246
-110.400612	32.322282
-110.400779	32.322322
-110.400895	32.322358
-110.400978	32.322411
-110.401048	32.322493
-110.401421	32.322696
-110.401724	32.322892
-110.401971	32.323046
-110.402050	32.323105
-110.402084	32.323230
-110.402033	32.323310
-110.401927	32.323431
-110.401845	32.323521
-110.401806	32.323627
-110.401850	32.323751
-110.401882	32.323930
-110.401833	32.324027
-110.401756	32.324093
-110.401634	32.324178
-110.401515	32.324223
-110.401219	32.324352
-110.401081	32.324447
-110.400881	32.324552
-110.400672	32.324590
-110.400410	32.324628
-110.400240	32.324614
-110.400218	32.324613
-110.400094	32.324552
-110.399467	32.324348
-110.399126	32.324222
-110.399019	32.324144
-110.398005	32.322760
-110.397885	32.322628
-110.397909	32.322559
-110.397967	32.322508
-110.399001	32.321748
-110.399080	32.321703