

1
2
3
4
5
6
7
8 IN THE SUPERIOR COURT OF THE STATE OF ARIZONA
9 IN AND FOR THE COUNTY OF MARICOPA

10 IN RE: THE GENERAL ADJUDICATION
11 OF ALL RIGHTS TO USE WATER IN
12 THE GILA RIVER SYSTEM AND
13 SOURCE

W-1, W-2, W-3, W-4 (Consolidated)

Contested Case Nos. W1-11-2697

14 **ORDER ON STIPULATION,**
15 **WITHDRAWAL OF OBJECTIONS,**
16 **MOTION TO APPROVE PROPOSED**
17 **WATER RIGHT ABSTRACTS FOR C-**
18 **SPEAR, LLC, MOTION TO INCLUDE**
19 **THE PROPOSED WATER RIGHT**
20 **ABSTRACTS FOR C-SPEAR, LLC IN**
21 **THE CATALOG OF PROPOSED**
22 **WATER RIGHTS, AND MOTION TO**
23 **VACATE TRIAL**

24 The Court has reviewed the June 20, 2025 Stipulation, Withdrawal of Objections,
25 Motion to Approve Proposed Water Right Abstracts for C-Spear, LLC, Motion to Include
26 the Proposed Water Right Abstracts for C-Spear, LLC in the Catalog of Proposed Water
27 Rights, and Motion to Vacate Trial (the "Stipulation"), has found good cause, and has found
28 no just reason for delay, therefore,

IT IS HEREBY ORDERED:

1. The Stipulation is enforceable in this Court according to its terms.
2. The proposed irrigation, stockwatering, and domestic water right abstracts attached hereto as Appendix A are approved. The abstracts shall be included in a Catalog of

1 Proposed Water Rights created pursuant to § 15 of the Rules for Proceedings before
2 the Special Master.

- 3 3. The Stipulation and this Order shall be binding upon the claimant, its successors and
4 assigns.
- 5 4. Nothing in the Stipulation or this Order shall be used as precedent in any other
6 contested case in the Adjudication proceedings. The bases of rights and priority
7 dates set forth in the abstracts attached hereto as Appendix A, and the Parties'
8 agreement to those bases of rights and priority dates, shall have no precedential
9 effect with respect to any other claim in any other contested case, and neither the
10 Stipulation nor this Order may be offered as evidence, submitted to any court, or
11 referred to in writing or orally for any purpose in any other contested case.
- 12 5. The July 21, 2025 trial for this contested case is vacated.

13
14
15 Signed this 24th day of June, 2025.

16
17
18 
19 Special Water Master
20 Sherri Zendri
21
22
23
24
25
26
27
28

1
2
3
4
5
6
7
8
9
10
11
12
13
14
15
16
17
18
19
20
21
22
23
24
25
26
27
28

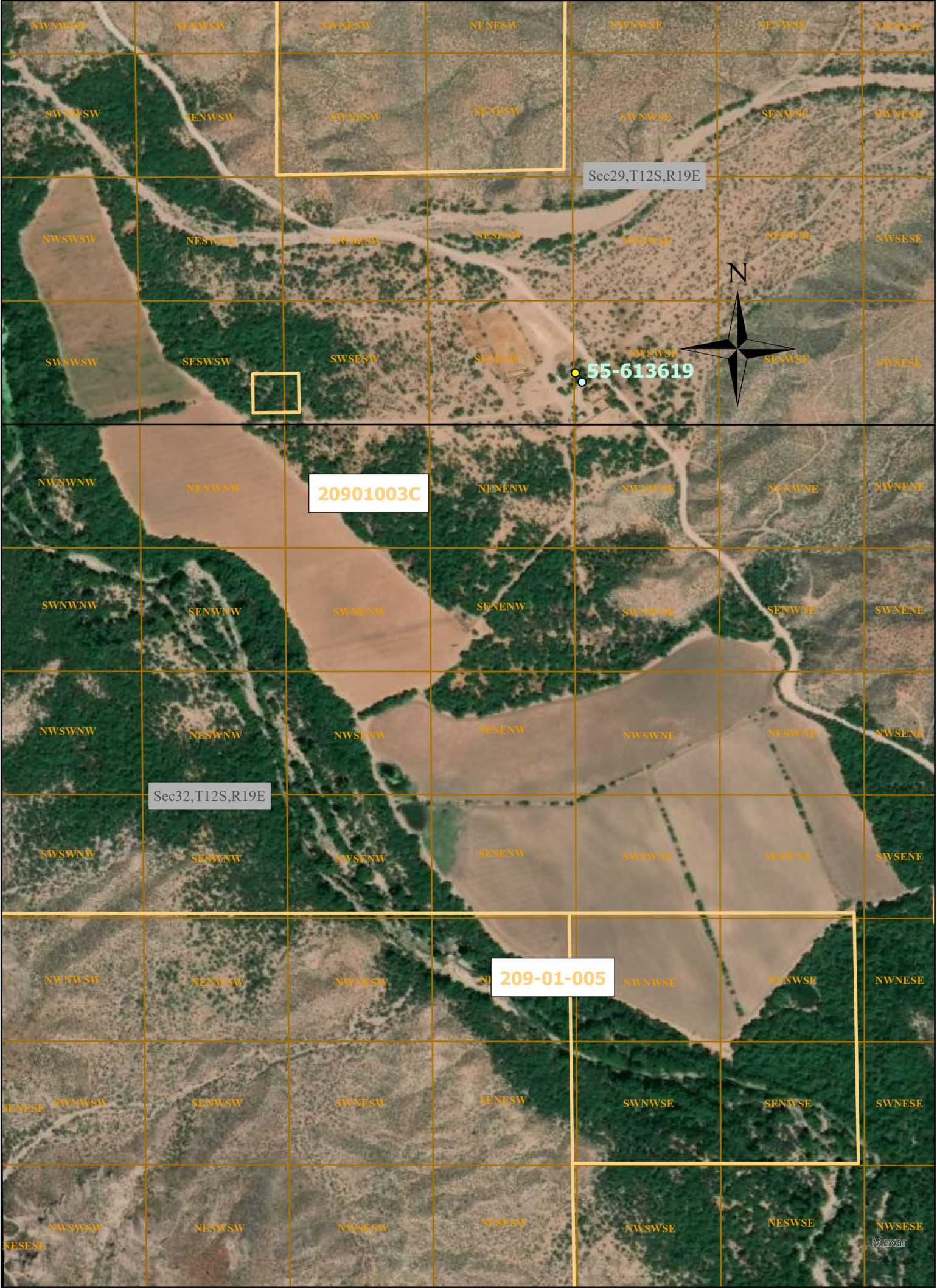
APPENDIX A

ABSTRACT OF WATER RIGHT

San Pedro Watershed

C-SPEAR LLC Domestic Use		
1.	Proposed Water Right.	113-12-CAA-001-DM001A
2.	Owner of Right. ^A	C-Spear LLC
3.	Landowner.	C-Spear LLC
4.	Statement of Claimant No.(s).	39-175271
5.	Statement of Claimant Name(s).	C-Spear LLC
6.	Lessee or Permittee.	None
7.	Basis of Right.	36-106443
8.	Beneficial Use.	Domestic
9.	Priority Date.	December 31, 1945
10.	Quantity.	1.00 AFA (1 dwelling)
11.	Places of Use.	SW ¼ SW ¼ SE ¼ of Section 29, Township 12 South, Range 19 East, Gila and Salt River Base and Meridian, Cochise County, Arizona <u>GPS Coordinates:</u> 32.355933 -110.425716
12.	Point of Diversion.	<u>55-613619</u> SW ¼ SW ¼ SE ¼ of Section 29, Township 12 South, Range 19 East, Gila and Salt River Base and Meridian, Cochise County, Arizona <u>GPS Coordinates:</u> 32.35578 -110.42566
13.	Source of Water.	Subflow of the San Pedro River

^A This abstract of water right and accompanying stipulation entered into by the parties in *In re Hope Iselin Jones* (W1-11-2697) are binding on C-Spear, LLC and its successors and assigns.



Well

House

APN

Sections

QQQ

0.3

Miles

Contested Case No. W1-11-2697

In re Hope Iselin Jones

Watershed File Report: 113-12-CAA-001

Claimant: C-Spear, LLC

Proposed Water Right 113-12-CAA-001-DM001

ABSTRACT OF WATER RIGHT

San Pedro Watershed

C-SPEAR LLC STOCKWATERING		
1.	Proposed Water Right.	113-12-CAA-001-SW001
2.	Owner of Right. ^A	C-Spear LLC
3.	Landowner.	C-Spear LLC
4.	Statement of Claimant No.(s).	39-014021 39-014022 39-175558
5.	Statement of Claimant Name(s).	C-Spear LLC
6.	Lessee or Permittee.	None
7.	Basis of Right.	36-106443
8.	Beneficial Use.	Stockwatering
9.	Priority Date.	December 31, 1945
10.	Quantity.	1 AFA
11.	Places of Use. ^B	<p>SW ¼ SW ¼ SE ¼; and SE ¼ SE ¼ SW ¼ of Sec. 29, Township 12 South, Range 19 East</p> <p>NE ¼ NE ¼ NW ¼; SE ¼ NE ¼ NW ¼ ; NE ¼ SE ¼ NW ¼; NW ¼ SE ¼ NW ¼; SW ¼ SE ¼ NW ¼; and NE ¼ NW ¼ SE ¼ of Sec 32, Township 12 South, Range 19 East</p> <p>All in Gila and Salt River Base and Meridian, Cochise County, Arizona</p>

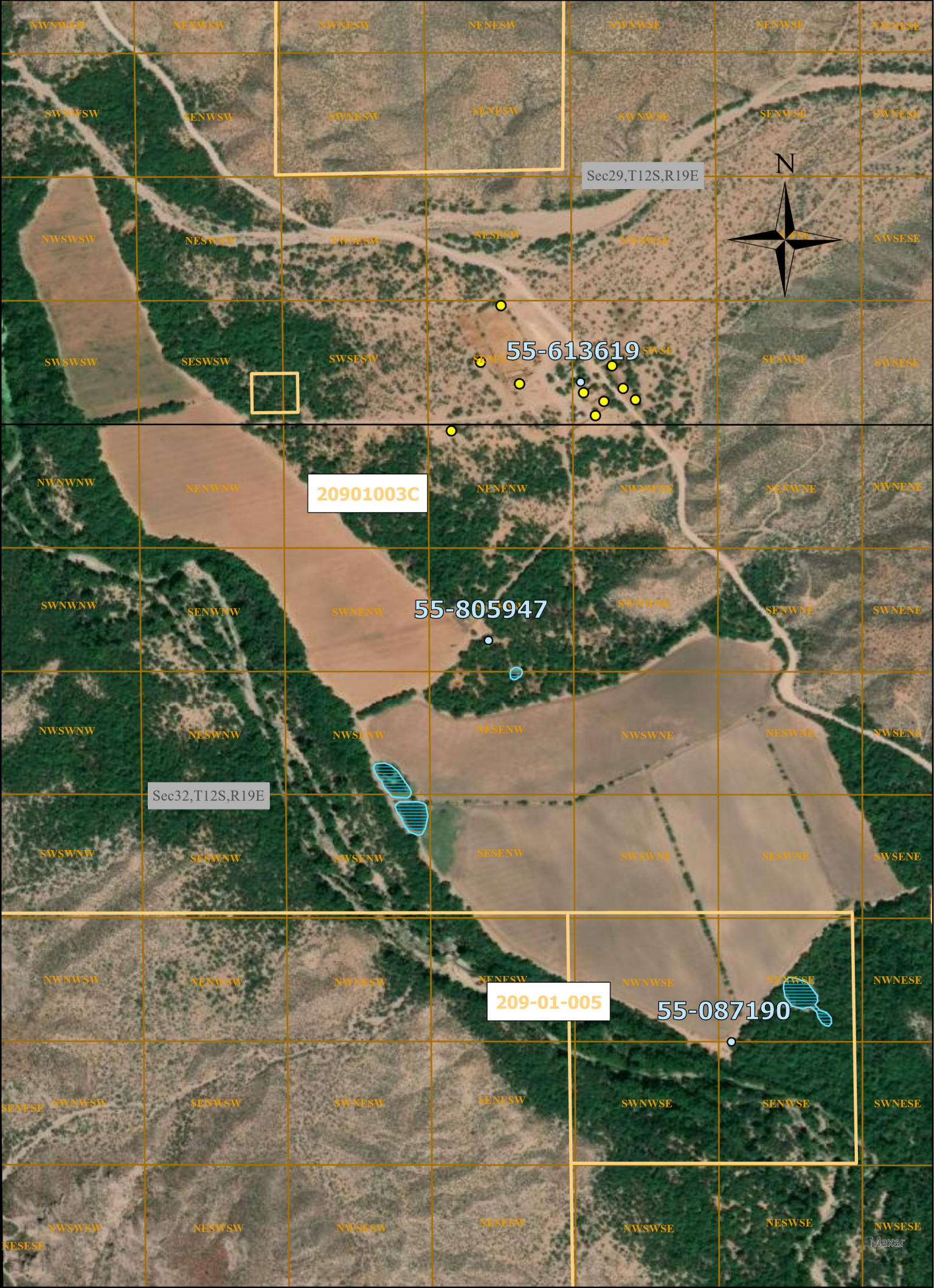
C-SPEAR LLC STOCKWATERING

		<p>East side of the San Pedro River in:</p> <p>SE $\frac{1}{4}$ NW $\frac{1}{4}$ SE $\frac{1}{4}$ of Sec. 32, Township 12 South, Range 19 East</p> <p>SW $\frac{1}{4}$ NW $\frac{1}{4}$ SE $\frac{1}{4}$; NW $\frac{1}{4}$ NW $\frac{1}{4}$ SE $\frac{1}{4}$; SW $\frac{1}{4}$ SE $\frac{1}{4}$ NW $\frac{1}{4}$; SE $\frac{1}{4}$ SE $\frac{1}{4}$ NW $\frac{1}{4}$; NW $\frac{1}{4}$ SE $\frac{1}{4}$ NW $\frac{1}{4}$; NE $\frac{1}{4}$ SW $\frac{1}{4}$ NW $\frac{1}{4}$; SE $\frac{1}{4}$ NW $\frac{1}{4}$ NW $\frac{1}{4}$; SW $\frac{1}{4}$ NW $\frac{1}{4}$ NW $\frac{1}{4}$; and NW $\frac{1}{4}$ NW $\frac{1}{4}$ NW $\frac{1}{4}$ of Sec. 32, Township 12 South, Range 19 East</p> <p>SW $\frac{1}{4}$ SW $\frac{1}{4}$ SW $\frac{1}{4}$; and NW $\frac{1}{4}$ SW $\frac{1}{4}$ SW $\frac{1}{4}$ of Sec. 29, Township 12 South, Range 19 East</p> <p>All in Gila and Salt River Base and Meridian, Cochise County, Arizona.</p>
12.	Points of Diversion.	<p><u>55-087190</u> – SE $\frac{1}{4}$ NW $\frac{1}{4}$ SE $\frac{1}{4}$ of Sec. 32, Township 12 South, Range 19 East <u>GPS Coordinates:</u> 32.346101 -110.423403</p> <p><u>55-613619</u> – SW $\frac{1}{4}$ SW $\frac{1}{4}$ SE $\frac{1}{4}$ of Sec. 29, Township 12 South, Range 19 East <u>GPS Coordinates:</u> 32.355798 -110.425617</p> <p><u>55-805947</u> – SE $\frac{1}{4}$ NE $\frac{1}{4}$ NW $\frac{1}{4}$ of Sec. 32, Township 12 South, Range 19 East <u>GPS Coordinates:</u> 32.35201 -110.427101</p>

C-SPEAR LLC STOCKWATERING		
		<p>East side of the San Pedro River in:</p> <p>SE ¼ NW ¼ SE ¼; SW ¼ NW ¼ SE ¼; NW ¼ NW ¼ SE ¼; SW ¼ SE ¼ NW ¼; SE ¼ SE ¼ NW ¼; NW ¼ SE ¼ NW ¼; NE ¼ SW ¼ NW ¼; SE ¼ NW ¼ NW ¼; SW ¼ NW ¼ NW ¼; and NW ¼ NW ¼ NW ¼ of Sec. 32, Township 12 South, Range 19 East</p> <p>SW ¼ SW ¼ SW ¼; NW ¼ SW ¼ SW ¼ of Sec. 29, Township 12 South, Range 19 East</p> <p>All in Gila and Salt River Base and Meridian, Cochise County, Arizona.</p>
13.	Source of Water.	San Pedro River and Subflow of the San Pedro River

^A This abstract of water right and accompanying stipulation entered into by the parties in *In re Hope Iselin Jones* (W1-11-2697) are binding on C-Spear, LLC and its successors and assigns.

^B See map and coordinates below for stockwatering locations including stockwatering and irrigation regulatory reservoirs and stockwatering troughs. Each reservoir's volume capacity is also listed below. The two reservoirs in the NW ¼ SE ¼ NW ¼ and SW ¼ SE ¼ NW ¼ of Section 32 Township 12 South Range 19 East are fed by: (1) tailwater from water that is pumped from well 55-087190 and used on IR001A and IR001B, and (2) localized surface runoff during major flood events. The reservoir in the NE ¼ NW ¼ SE ¼ is fed directly from well 55-087190. The reservoir in the NE ¼ SE ¼ NW ¼, and SE ¼ NE ¼ NW ¼ of Section 32 Township 12 South Range 19 East is fed directly from well 55-805947. All stockwatering troughs are fed by water from well 55-613619.



Wells

Stockwatering Troughs

Reservoirs

APN

Sections

QQQ

0.3

Miles

Contested Case No. W1-11-2697

In re Hope Iselin Jones

Watershed File Report: 113-12-CAA-001

Claimant: C-Spear, LLC

Proposed Water Right: 113-12-CAA-001-SW001

Stockwatering Troughs Coordinates

Y	X
32.322574	-110.398066
32.355642	-110.425573
32.355514	-110.425274
32.355306	-110.425399
32.355772	-110.426514
32.355082	-110.427516
32.356090	-110.427087
32.356921	-110.426787
32.355538	-110.424810
32.355705	-110.424992
32.356036	-110.425155

Reservoir in NE ¼ NW ¼ SE ¼

Volume Capacity: 1.86 AF

Coordinates:

Y	X
32.347054	-110.422557
32.347038	-110.422450
32.346973	-110.422281
32.346788	-110.422142
32.346700	-110.422133
32.346649	-110.422170
32.346571	-110.422105
32.346535	-110.422003
32.346462	-110.421937
32.346382	-110.421929
32.346335	-110.421967
32.346346	-110.422020
32.346386	-110.422076
32.346459	-110.422124
32.346545	-110.422149
32.346614	-110.422230
32.346611	-110.422289
32.346589	-110.422350
32.346630	-110.422510
32.346762	-110.422610
32.346894	-110.422636
32.346980	-110.422626
32.347054	-110.422557

Reservoir in SW ¼ SE ¼ NW ¼

Volume Capacity: 1.54 AF

Coordinates:

Y	X
32.349573	-110.428345
32.349628	-110.428282
32.349631	-110.428008
32.349606	-110.427923
32.349581	-110.427892
32.349417	-110.427860
32.349248	-110.427897
32.349152	-110.427946
32.349136	-110.428006
32.349190	-110.428136
32.349301	-110.428216
32.349389	-110.428248
32.349486	-110.428318
32.349573	-110.428345

**Reservoir in NW ¼ SE ¼ NW ¼ and SW
¼ SE ¼ NW ¼**

Volume Capacity: 1.47 AF

Coordinates:

Y	X
32.350192	-110.428592
32.350197	-110.428494
32.350164	-110.428410
32.350081	-110.428307
32.349977	-110.428236
32.349822	-110.428127
32.349764	-110.428104
32.349709	-110.428126
32.349685	-110.428159
32.349689	-110.428291
32.349705	-110.428386
32.349766	-110.428441
32.349836	-110.428502
32.349906	-110.428533
32.349948	-110.428547
32.349964	-110.428578
32.350037	-110.428626
32.350128	-110.428662
32.350181	-110.428636
32.350192	-110.428592

**Reservoir in SE ¼ NE ¼ NW ¼ and NE ¼
SE ¼ NW ¼**

Volume Capacity: .21 AF

Coordinates:

Y	X
32.351581	-110.426485
32.351525	-110.426472
32.351480	-110.426499
32.351440	-110.426555
32.351429	-110.426600
32.351455	-110.426645
32.351523	-110.426652
32.351572	-110.426638
32.351607	-110.426590
32.351610	-110.426546
32.351581	-110.426485

ABSTRACT OF WATER RIGHT

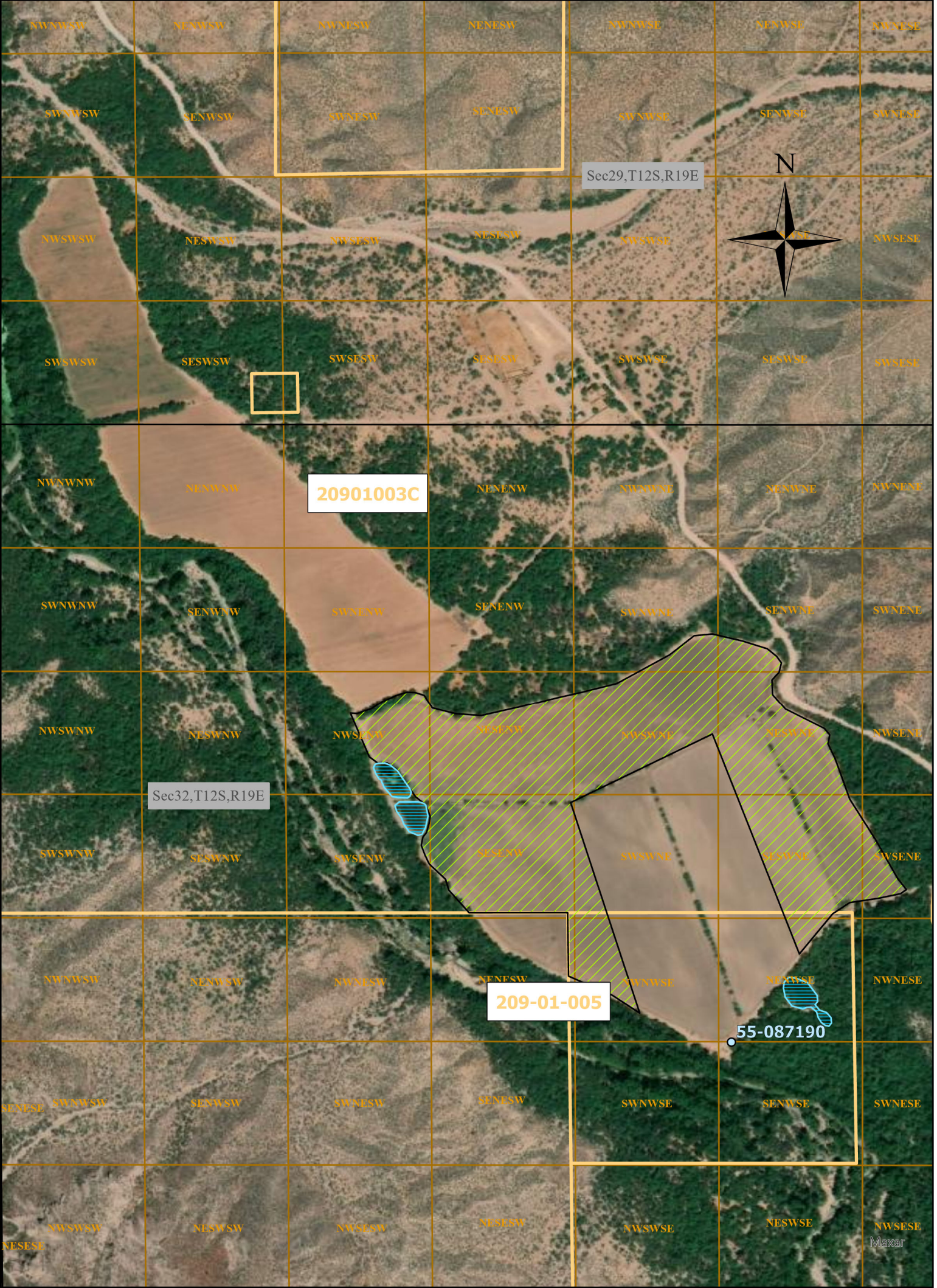
San Pedro Watershed

C-SPEAR LLC Irrigation Use 001A		
1.	Proposed Water Right.	113-12-CAA-001-IR001A
2.	Owner of Right. ^A	C-Spear LLC
3.	Landowner.	C-Spear LLC
4.	Statement of Claimant No.(s).	39-175272
5.	Statement of Claimant Name(s).	C-Spear LLC
6.	Lessee or Permittee.	None
7.	Basis of Right.	36-106443
8.	Beneficial Use.	Irrigation
9.	Priority Date.	December 31, 1959
10.	Quantity.	325.38 AFA (45.7 irrigated acres) Irrigation water duty: 7.12 AF/acre Maximum diversion rate = 2.5 CFS
11.	Places of Use. ^B	IR001A: SW ¼ NW ¼ NE ¼ of Sec. 32, Township 12 South, Range 19 East SE ¼ NW ¼ NE ¼ of Sec. 32, Township 12 South, Range 19 East NW ¼ SE ¼ NW ¼ of Sec. 32, Township 12 South, Range 19 East NE ¼ SE ¼ NW ¼ of Sec. 32, Township 12 South, Range 19 East NW ¼ SW ¼ NE ¼ of Sec. 32, Township 12 South, Range 19 East

C-SPEAR LLC Irrigation Use 001A		
		<p>NE ¼ SW ¼ NE ¼ of Sec. 32, Township 12 South, Range 19 East</p> <p>SW ¼ SE ¼ NW ¼ of Sec. 32, Township 12 South, Range 19 East</p> <p>SE ¼ SE ¼ NW ¼ of Sec. 32, Township 12 South, Range 19 East</p> <p>SW ¼ SW ¼ NE ¼ of Sec. 32, Township 12 South, Range 19 East</p> <p>SE ¼ SW ¼ NE ¼ of Sec. 32, Township 12 South, Range 19 East</p> <p>SW ¼ SE ¼ NE ¼ of Sec. 32, Township 12 South, Range 19 East</p> <p>NW ¼ NW ¼ SE ¼ of Sec. 32, Township 12 South, Range 19 East</p> <p>NE ¼ NW ¼ SE ¼ of Sec. 32, Township 12 South, Range 19 East</p> <p>All in the Gila and Salt River Base and Meridian, Cochise County, Arizona.</p>
12.	Points of Diversion.	<p><u>55-087190</u> – SE ¼ NW ¼ SE ¼ of Sec. 32, Township 12 South, Range 19 East In the Gila and Salt River Base and Meridian, Cochise County, Arizona.</p> <p><u>GPS Coordinates:</u> 32.346101 -110.423403</p>
13.	Source of Water.	<u>Subflow of the San Pedro River</u>

^A This abstract of water right and accompanying stipulation entered into by the parties in *In re Hope Iselin Jones* (W1-11-2697) are binding on C-Spear, LLC and its successors and assigns.

^B See map and coordinates below for places of use and stockwatering and irrigation regulatory reservoirs. Each reservoir's volume capacity is also listed below.



Irrigation Acreage

Well

APN

Regulatory Reservoirs

Sections

QQQ

0.3

Miles

Contested Case No. W1-11-2697

In re Hope Iselin Jones

Watershed File Report: 113-12-CAA-001

Claimant: C-Spear, LLC

Proposed Water Right: 113-12-CAA-001-IR001A

IR001A

32.350931	-110.429000	32.347985	-110.421912
32.350926	-110.428893	32.347396	-110.422402
32.350942	-110.428854	32.350624	-110.423680
32.350998	-110.428689	32.349617	-110.425763
32.351098	-110.428539	32.346512	-110.424737
32.351201	-110.428316	32.346787	-110.425147
32.351244	-110.428166	32.347014	-110.425661
32.351239	-110.428048	32.347070	-110.425794
32.351199	-110.427917	32.348001	-110.425807
32.351009	-110.427795	32.348000	-110.427255
32.350922	-110.427449	32.348331	-110.427553
32.350896	-110.427076	32.348492	-110.427602
32.351026	-110.426504	32.348715	-110.427840
32.351165	-110.425950	32.348843	-110.427903
32.351243	-110.425603	32.348990	-110.427958
32.351373	-110.425083	32.349107	-110.427935
32.351797	-110.424303	32.349181	-110.427880
32.352075	-110.423948	32.349311	-110.427844
32.352101	-110.423679	32.349415	-110.427826
32.351997	-110.423238	32.349581	-110.427892
32.351884	-110.422874	32.349704	-110.428043
32.351771	-110.422735	32.349977	-110.428236
32.351676	-110.422666	32.350106	-110.428324
32.351537	-110.422700	32.350199	-110.428461
32.351425	-110.422804	32.350192	-110.428592
32.351208	-110.422796	32.350290	-110.428722
32.350992	-110.422605	32.350931	-110.429000
32.350706	-110.422033	32.351199	-110.427917
32.350610	-110.421955	32.351239	-110.428048
32.350480	-110.421981	32.351244	-110.428166
32.350264	-110.421877	32.351201	-110.428316
32.349666	-110.421661	32.351098	-110.428539
32.349068	-110.421279	32.350998	-110.428689
32.348505	-110.420959	32.350942	-110.428854
32.348340	-110.420829	32.350926	-110.428893
32.348279	-110.420915	32.350931	-110.429000
32.348210	-110.421253	32.351199	-110.427917
32.348149	-110.421661		

Reservoir in NE ¼ NW ¼ SE ¼

Volume Capacity: 1.86 AF

Coordinates:

Y	X
32.347054	-110.422557
32.347038	-110.422450
32.346973	-110.422281
32.346788	-110.422142
32.346700	-110.422133
32.346649	-110.422170
32.346571	-110.422105
32.346535	-110.422003
32.346462	-110.421937
32.346382	-110.421929
32.346335	-110.421967
32.346346	-110.422020
32.346386	-110.422076
32.346459	-110.422124
32.346545	-110.422149
32.346614	-110.422230
32.346611	-110.422289
32.346589	-110.422350
32.346630	-110.422510
32.346762	-110.422610
32.346894	-110.422636
32.346980	-110.422626
32.347054	-110.422557

Reservoir in SW ¼ SE ¼ NW ¼

Volume Capacity: 1.54 AF

Coordinates:

Y	X
32.349573	-110.428345
32.349628	-110.428282
32.349631	-110.428008
32.349606	-110.427923
32.349581	-110.427892
32.349417	-110.427860
32.349248	-110.427897
32.349152	-110.427946
32.349136	-110.428006
32.349190	-110.428136
32.349301	-110.428216
32.349389	-110.428248
32.349486	-110.428318
32.349573	-110.428345

Reservoir in NW ¼ SE ¼ NW ¼ and SW ¼ SE ¼ NW ¼

Volume Capacity: 1.47 AF

Coordinates:

Y	X
32.350192	-110.428592
32.350197	-110.428494
32.350164	-110.428410
32.350081	-110.428307
32.349977	-110.428236
32.349822	-110.428127
32.349764	-110.428104
32.349709	-110.428126
32.349685	-110.428159
32.349689	-110.428291
32.349705	-110.428386
32.349766	-110.428441
32.349836	-110.428502
32.349906	-110.428533
32.349948	-110.428547
32.349964	-110.428578
32.350037	-110.428626
32.350128	-110.428662
32.350181	-110.428636
32.350192	-110.428592

ABSTRACT OF WATER RIGHT

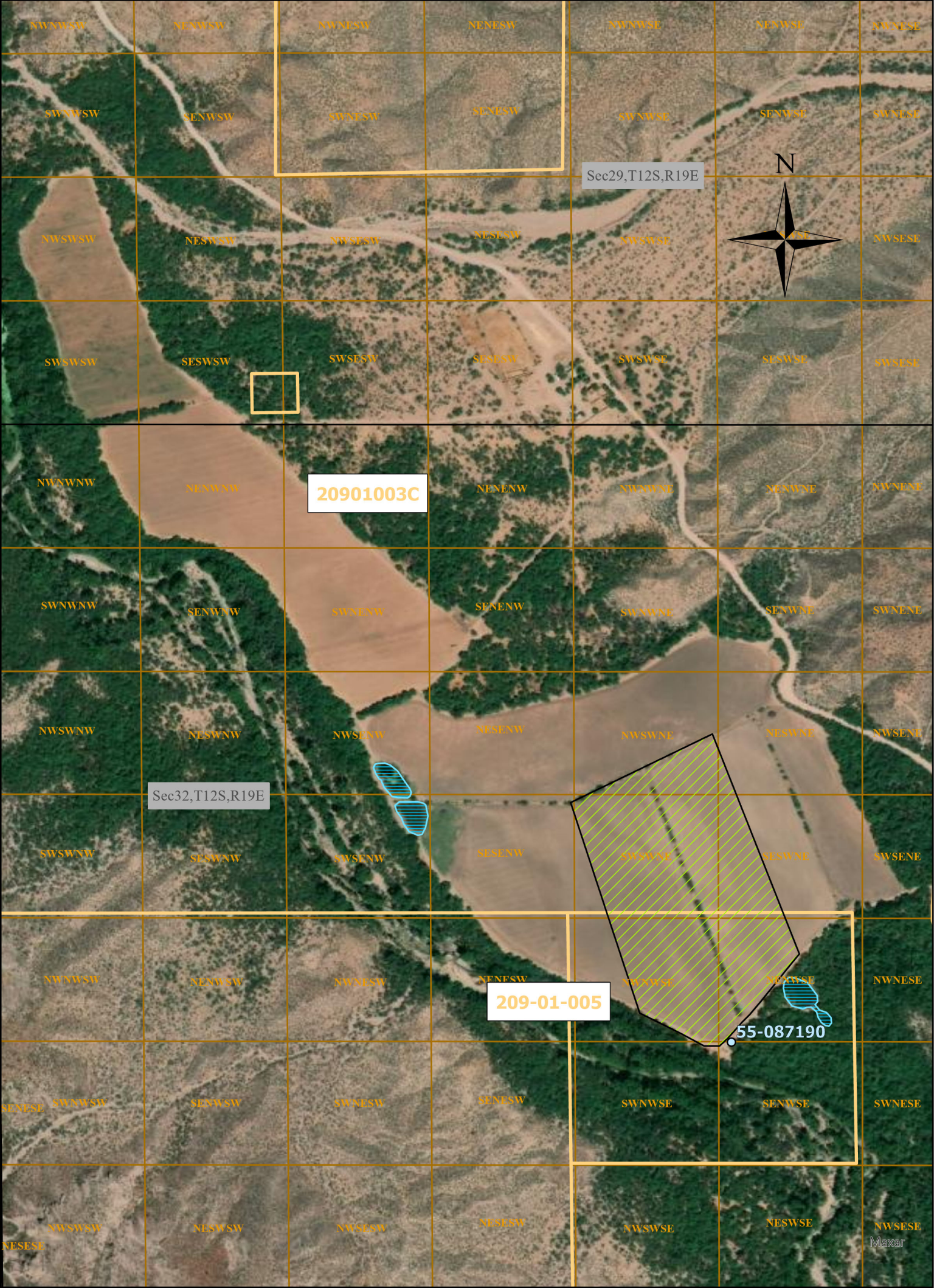
San Pedro Watershed


C-SPEAR LLC Irrigation Use 001B		
1.	Proposed Water Right.	113-12-CAA-001-IR001B
2.	Owner of Right. ^A	C-Spear LLC
3.	Landowner.	C-Spear LLC
4.	Statement of Claimant No.(s).	39-175272
5.	Statement of Claimant Name(s).	C-Spear LLC
6.	Lessee or Permittee.	None
7.	Basis of Right.	CWR No. 12062.0000
8.	Beneficial Use.	Irrigation
9.	Priority Date.	June 1, 1979
10.	Quantity.	140.72 AFA (23.81 irrigated acres) Irrigation water duty: 5.91 AF/acre Maximum diversion rate = 2.5 CFS
11.	Places of Use. ^B	IR001B: SE ¼ SE ¼ NW ¼ of Sec. 32, Township 12 South, Range 19 East NW ¼ SW ¼ NE ¼ of Sec. 32, Township 12 South, Range 19 East SW ¼ SW ¼ NE ¼ of Sec. 32, Township 12 South, Range 19 East NE ¼ SW ¼ NE ¼ of Sec. 32, Township 12 South, Range 19 East


C-SPEAR LLC Irrigation Use 001B		
		<p>SE ¼ SW ¼ NE ¼ of Sec. 32, Township 12 South, Range 19 East</p> <p>NE ¼ NW ¼ SE ¼ of Sec. 32, Township 12 South, Range 19 East</p> <p>NW ¼ NW ¼ SE ¼ of Sec. 32, Township 12 South, Range 19 East</p> <p>SW ¼ NW ¼ SE ¼ of Sec. 32, Township 12 South, Range 19 East</p> <p>SE ¼ NW ¼ SE ¼ of Sec. 32, Township 12 South, Range 19 East</p> <p>All in the Gila and Salt River Base and Meridian, Cochise County, Arizona.</p>
12.	Points of Diversion.	<p><u>55-087190</u> – SE ¼ NW ¼ SE ¼ of Sec. 32, Township 12 South, Range 19 East In the Gila and Salt River Base and Meridian, Cochise County, Arizona.</p> <p><u>GPS Coordinates:</u> 32.346101 -110.423403</p>
13.	Source of Water.	<u>Subflow of the San Pedro River</u>


^A This abstract of water right and accompanying stipulation entered into by the parties in *In re Hope Iselin Jones* (W1-11-2697) are binding on C-Spear, LLC and its successors and assigns.


^B See map and coordinates below for places of use and stockwatering and irrigation regulatory reservoirs. Each reservoir's volume capacity is also listed below.





 Irrigation Acreage

 Well

 Regulatory Reservoirs

 APN

 Sections

 QQQ

0.3

Miles

Contested Case No. W1-11-2697

In re Hope Iselin Jones

Watershed File Report: 113-12-CAA-001

Claimant: C-Spear, LLC

Proposed Water Right: 113-12-CAA-001-IR001B

IR001B**Y****X**

32.347396	-110.422402
32.350624	-110.423680
32.349617	-110.425763
32.346527	-110.424748
32.346235	-110.424156
32.346044	-110.423801
32.346044	-110.423575
32.346157	-110.423454
32.346390	-110.423246
32.346499	-110.423137
32.346692	-110.422974
32.347266	-110.422510

Reservoir in NE ¼ NW ¼ SE ¼

Volume Capacity: 1.86 AF

Coordinates:

Y**X**

32.347054	-110.422557
32.347038	-110.422450
32.346973	-110.422281
32.346788	-110.422142
32.346700	-110.422133
32.346649	-110.422170
32.346571	-110.422105
32.346535	-110.422003
32.346462	-110.421937
32.346382	-110.421929
32.346335	-110.421967
32.346346	-110.422020
32.346386	-110.422076
32.346459	-110.422124
32.346545	-110.422149
32.346614	-110.422230
32.346611	-110.422289
32.346589	-110.422350
32.346630	-110.422510
32.346762	-110.422610
32.346894	-110.422636
32.346980	-110.422626
32.347054	-110.422557

Reservoir in SW ¼ SE ¼ NW ¼

Volume Capacity: 1.54 AF

Coordinates:

Y**X**

32.349573	-110.428345
32.349628	-110.428282
32.349631	-110.428008
32.349606	-110.427923
32.349581	-110.427892
32.349417	-110.427860
32.349248	-110.427897
32.349152	-110.427946
32.349136	-110.428006
32.349190	-110.428136
32.349301	-110.428216
32.349389	-110.428248
32.349486	-110.428318
32.349573	-110.428345

Reservoir in NW ¼ SE ¼ NW ¼ and SW ¼ SE ¼ NW ¼

Volume Capacity: 1.47 AF

Coordinates:

Y	X
32.350192	-110.428592
32.350197	-110.428494
32.350164	-110.428410
32.350081	-110.428307
32.349977	-110.428236
32.349822	-110.428127
32.349764	-110.428104
32.349709	-110.428126
32.349685	-110.428159
32.349689	-110.428291
32.349705	-110.428386
32.349766	-110.428441
32.349836	-110.428502
32.349906	-110.428533
32.349948	-110.428547
32.349964	-110.428578
32.350037	-110.428626
32.350128	-110.428662
32.350181	-110.428636
32.350192	-110.428592

ABSTRACT OF WATER RIGHT

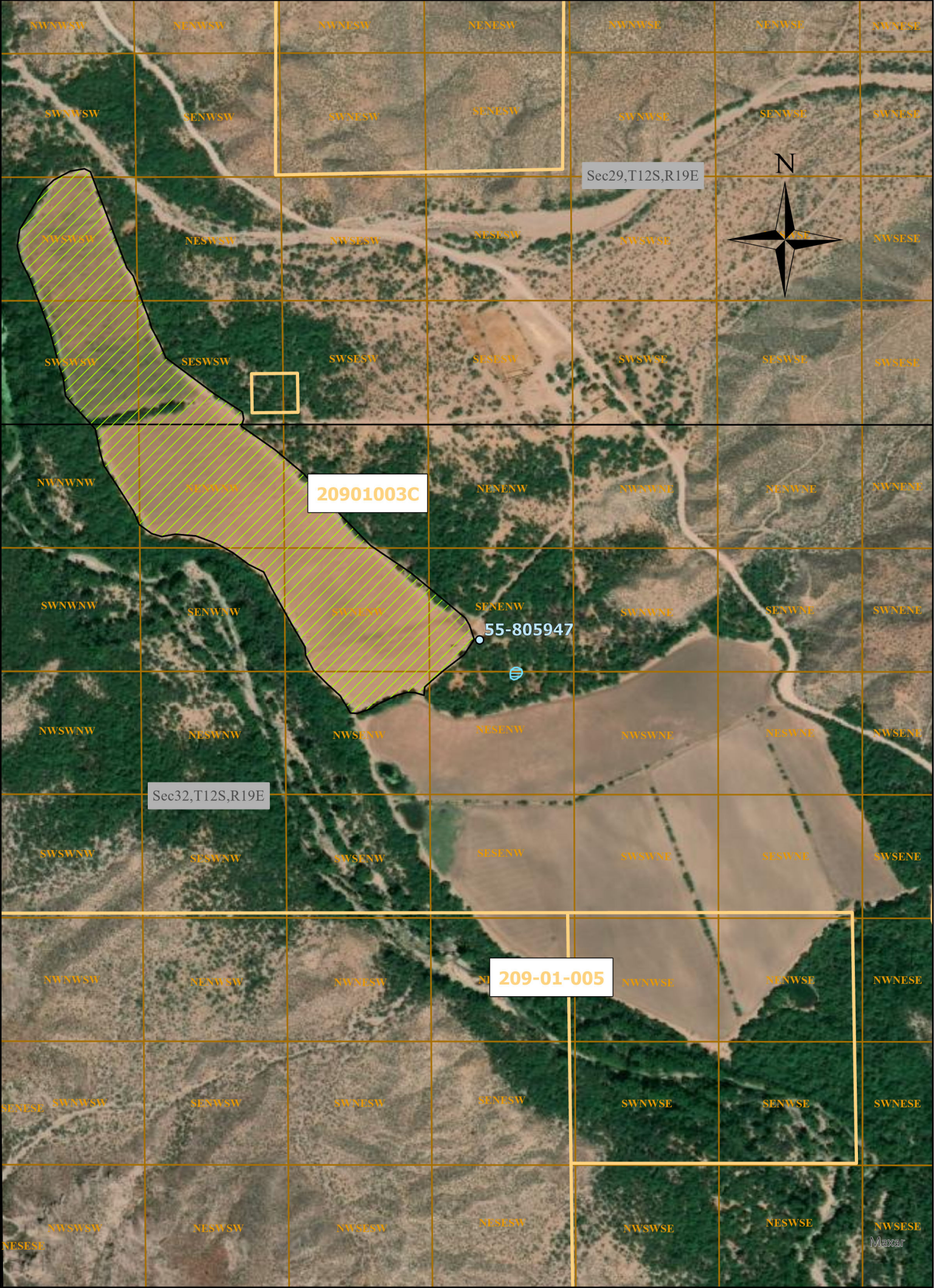
San Pedro Watershed


C-SPEAR LLC Irrigation Use 002		
1.	Proposed Water Right.	113-12-CAA-001-IR002
2.	Owner of Right. ^A	C-Spear LLC
3.	Landowner.	C-Spear LLC
4.	Statement of Claimant No.(s).	39-175273
5.	Statement of Claimant Name(s).	C-Spear LLC
6.	Lessee or Permittee.	None
7.	Basis of Right.	36-106443
8.	Beneficial Use.	Irrigation
9.	Priority Date.	December 31, 1945
10.	Quantity.	285.44 AFA (40.09 irrigated acres) Irrigation water duty: 7.12 AF/acre Maximum diversion rate = 2.5 CFS
11.	Places of Use. ^B	IR002: SW ¼ NW ¼ SW ¼ of Sec. 29, Township 12 South, Range 19 East NW ¼ SW ¼ SW ¼ of Sec. 29, Township 12 South, Range 19 East SW ¼ SW ¼ SW ¼ of Sec. 29, Township 12 South, Range 19 East SE ¼ SW ¼ SW ¼ of Sec. 29, Township 12 South, Range 19 East NW ¼ NW ¼ NW ¼ of Sec. 32, Township 12 South, Range 19 East


C-SPEAR LLC Irrigation Use 002		
		<p>NE ¼ NW ¼ NW ¼ of Sec. 32, Township 12 South, Range 19 East</p> <p>NW ¼ NE ¼ NW ¼ of Sec. 32, Township 12 South, Range 19 East</p> <p>SE ¼ NW ¼ NW ¼ of Sec. 32, Township 12 South, Range 19 East</p> <p>SW ¼ NE ¼ NW ¼ of Sec. 32, Township 12 South, Range 19 East</p> <p>SE ¼ NE ¼ NW ¼ of Sec. 32, Township 12 South, Range 19 East</p> <p>NW ¼ SE ¼ NW ¼ of Sec. 32, Township 12 South, Range 19 East</p> <p>NE ¼ SE ¼ NW ¼ of Sec. 32, Township 12 South, Range 19 East</p> <p>All in the Gila and Salt River Base and Meridian, Cochise County, Arizona.</p>
12.	Points of Diversion.	<p><u>55-805947</u> – SE ¼ NE ¼ NW ¼ of Sec. 32, Township 12 South, Range 19 East Gila and Salt River Base and Meridian, Cochise County, Arizona.</p> <p><u>GPS Coordinates:</u> 32.35201 -110.427101</p>
13.	Source of Water.	Subflow of the San Pedro River


^A This abstract of water right and accompanying stipulation entered into by the parties in *In re Hope Iselin Jones* (W1-11-2697) are binding on C-Spear, LLC and its successors and assigns.


^B See map and coordinates below for places of use and stockwatering and irrigation regulatory reservoir. The reservoir's volume and capacity is also listed below.

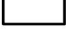



 Irrigation Acreage

 Well

 Regulatory Reservoir

 APN

 Sections

 QQQ

0.3

Miles

Contested Case No. W1-11-2697

In re Hope Iselin Jones

Watershed File Report: 113-12-CAA-001

Claimant: C-Spear, LLC

Proposed Water Right: 113-12-CAA-001-IR002

IR002

Y	X		
32.351199	-110.427917	32.356954	-110.433568
32.350931	-110.429000	32.357050	-110.433609
32.351199	-110.427917	32.357238	-110.433679
32.351239	-110.428048	32.357352	-110.433727
32.351244	-110.428166	32.357508	-110.433808
32.351201	-110.428316	32.357577	-110.433840
32.351098	-110.428539	32.357793	-110.433895
32.350998	-110.428689	32.358036	-110.433861
32.350942	-110.428854	32.358617	-110.433514
32.350926	-110.428893	32.358764	-110.433358
32.350931	-110.429000	32.358894	-110.433116
32.351191	-110.429147	32.358929	-110.432908
32.351364	-110.429338	32.358885	-110.432821
32.351572	-110.429546	32.357473	-110.432284
32.351789	-110.429658	32.357359	-110.432194
32.351910	-110.429667	32.357186	-110.432130
32.352248	-110.429866	32.356911	-110.432031
32.352776	-110.430161	32.356732	-110.431961
32.353010	-110.430273	32.356591	-110.431922
32.353123	-110.430499	32.356377	-110.431807
32.353296	-110.430733	32.356156	-110.431712
32.353426	-110.430967	32.355627	-110.431001
32.353539	-110.431270	32.355359	-110.430585
32.353565	-110.431573	32.355255	-110.430568
32.353530	-110.431772	32.355151	-110.430603
32.353574	-110.431920	32.354803	-110.430106
32.353704	-110.432102	32.354456	-110.429690
32.353903	-110.432188	32.353816	-110.429112
32.354241	-110.432405	32.353400	-110.428705
32.354570	-110.432622	32.353002	-110.428116
32.354787	-110.432682	32.352638	-110.427674
32.355107	-110.432749	32.352335	-110.427310
32.355220	-110.432851	32.352231	-110.427249
32.355483	-110.433092	32.352023	-110.427180
32.355597	-110.433186	32.351797	-110.427327
32.355853	-110.433220	32.351563	-110.427631
32.356008	-110.433271	32.351416	-110.427804
32.356554	-110.433419	32.351321	-110.427908
		32.351199	-110.427917

Reservoir in SE ¼ NE ¼ NW ¼ and NE ¼ SE ¼ NW ¼

Volume Capacity: .21 AF

Coordinates:

Y	X
32.351581	-110.426485
32.351525	-110.426472
32.351480	-110.426499
32.351440	-110.426555
32.351429	-110.426600
32.351455	-110.426645
32.351523	-110.426652
32.351572	-110.426638
32.351607	-110.426590
32.351610	-110.426546
32.351581	-110.426485