

Superior Court of Arizona

---

**Maricopa County  
Juvenile Probation  
Department**



**2004  
Data Book**

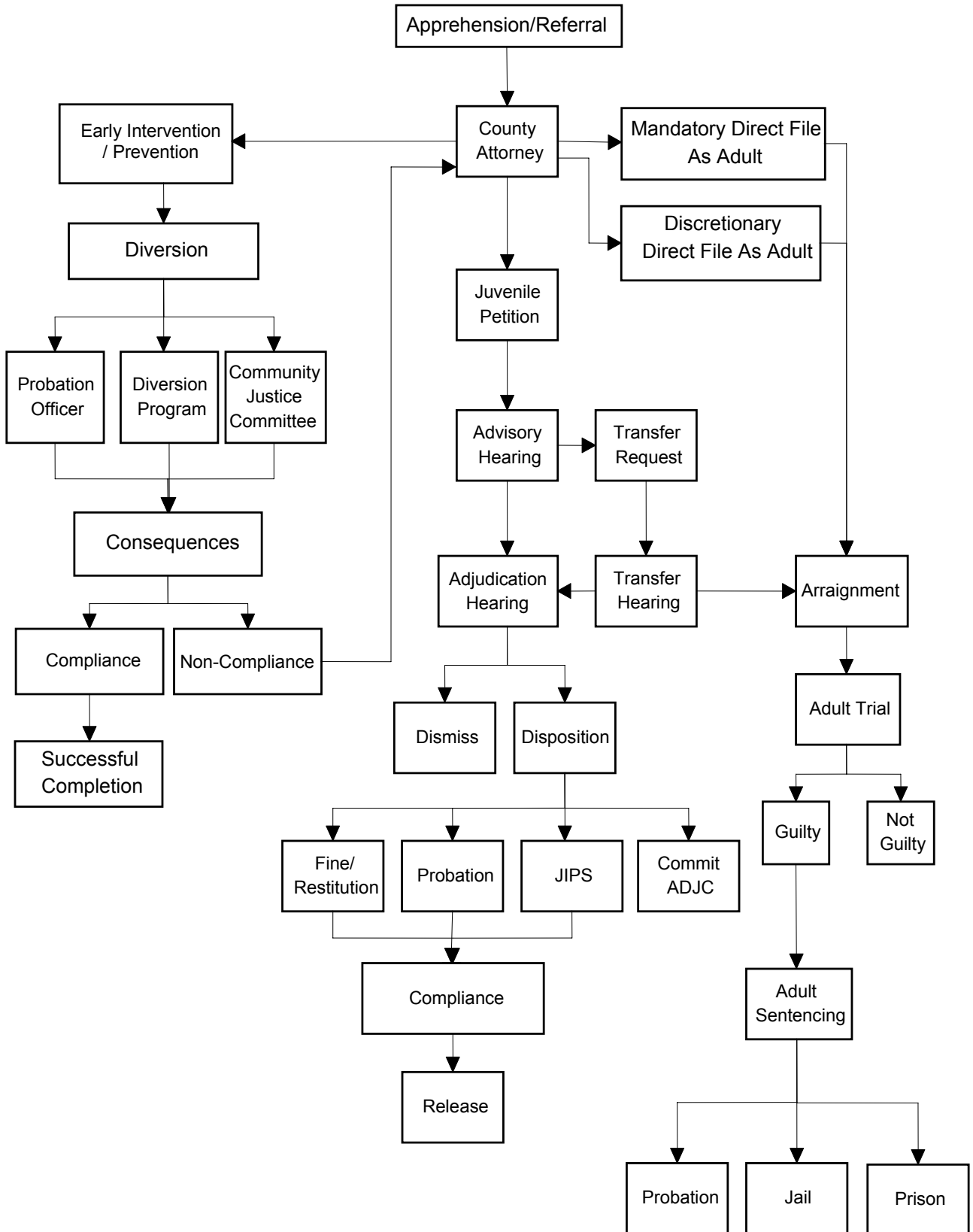
Includes Comparison Data 2000 to 2004

# TABLE OF CONTENTS

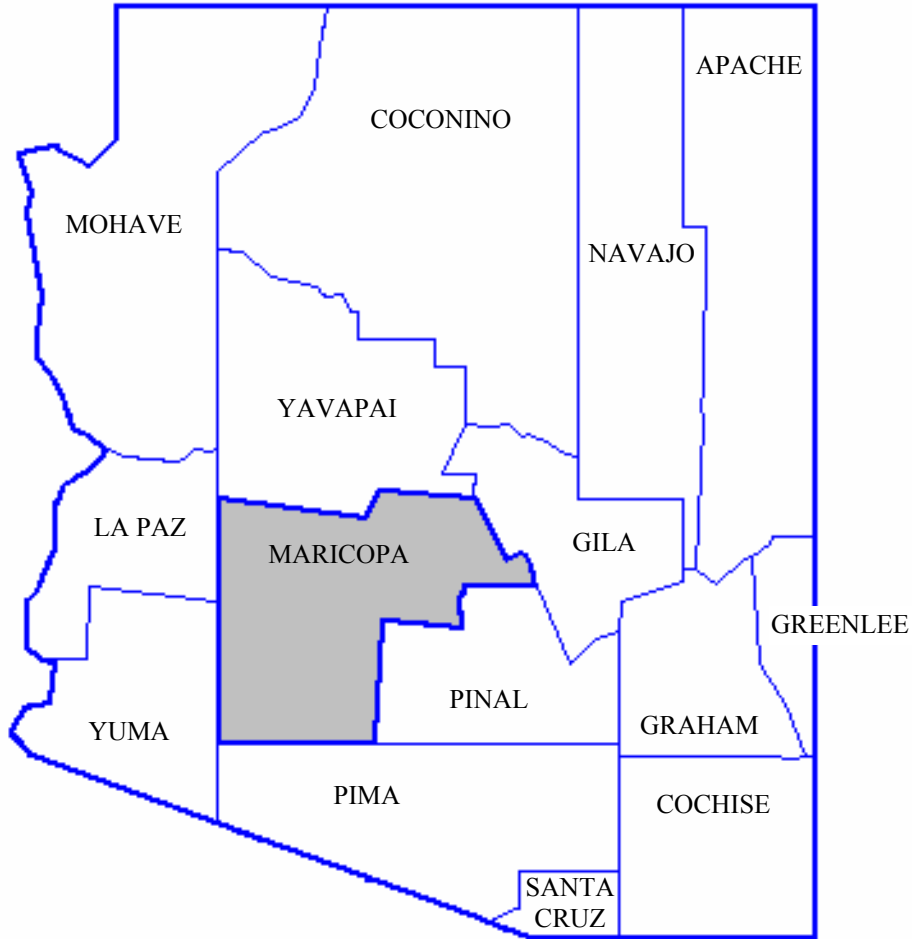
<b>TABLE OF CONTENTS .....</b>	<b>1</b>
<b>HOW MARICOPA COUNTY’S JUVENILE JUSTICE SYSTEM WORKS.....</b>	<b>3</b>
<b>STATE AND COUNTY STATISTICS/JUVENILE POPULATION .....</b>	<b>4</b>
<b>STATISTICAL SUMMARY CHART .....</b>	<b>5</b>
<b>WORKLOAD STATISTICS SUMMARY .....</b>	<b>6</b>
<b>FINANCIAL SUMMARY .....</b>	<b>8</b>
<b>FINANCIAL SUMMARY .....</b>	<b>9</b>
<b>COMPLAINTS RECEIVED 2000 – 2004 .....</b>	<b>10</b>
COMPLAINTS/JUVENILES .....	10
TYPE OF COMPLAINT .....	11
TEN MOST COMMON OFFENSES .....	12
COMPARISON – MOST COMMON OFFENSES 2000 – 2004 .....	12
SEVERITY TYPE OF OFFENSE .....	13
MOST SEVERE OFFENSE PER COMPLAINT .....	17
<b>DISPOSITION OF COMPLAINTS 2000 – 2004.....</b>	<b>21</b>
NON-COURT DISPOSITIONS .....	21
COURT DISPOSITIONS .....	22
ADULT CRIMINAL DISPOSITIONS .....	22
<b>REFERRAL SOURCE.....</b>	<b>23</b>
SOURCE OF COMPLAINT 2004.....	23
SOURCE OF COMPLAINTS AND TYPE OF OFFENSE.....	24
MOST FREQUENT COMPLAINT SOURCES – ANNUAL CHANGES .....	25
<b>CHARACTERISTICS OF JUVENILES REFERRED.....</b>	<b>26</b>
GENDER.....	26
AGE AT TIME OF COMPLAINT .....	27
ETHNICITY.....	28
SCHOOL STATUS.....	29
NUMBER OF PRIOR COMPLAINTS.....	30
<b>FIRST TIME OFFENDERS.....</b>	<b>31</b>
<b>DETENTION .....</b>	<b>32</b>
JUVENILES BROUGHT TO DETENTION SCREENING AND JUVENILES DETAINED .....	32
<b>PROBATION .....</b>	<b>33</b>
PROBATION STATISTICS 2000 – 2004 .....	33
A DAY ON STANDARD PROBATION 12-01-2004 .....	34
A DAY ON JUVENILE INTENSIVE PROBATION (JIPS) 12-01-2004 .....	35
<b>ACCOUNTABILITY .....</b>	<b>36</b>
COURT ORDERED MONETARY PENALTY 2000 – 2004 .....	36
RESTITUTION 2000 - 2004 .....	36
WORK HOURS 2000-2004.....	37
EDUCATIONAL COUNSELING PROGRAMS 2000 - 2004 .....	37
OTHER CONSEQUENCES 2000 - 2004 .....	37

<b>TRENDS: COMMITMENTS AND ADULT PROSECUTIONS .....</b>	<b>38</b>
<b>COMMITMENT PROFILE 2004 .....</b>	<b>39</b>
<b>JUVENILES PROSECUTED AS ADULTS.....</b>	<b>40</b>
DIRECT FILES .....	40
REMANDS .....	41
<b>DIVERSION.....</b>	<b>42</b>
CONSEQUENCES.....	43
JUVENILES ASSIGNED TO DIVERSION .....	44
<b>TREATMENT.....</b>	<b>45</b>
<b>RECIDIVISM .....</b>	<b>46</b>
PROBABILITY OF NOT GETTING A NEW OFFENSE WITHIN ONE YEAR.....	46
DIVERSION .....	47
PROBATION .....	48
<b>CLASS OF 2004.....</b>	<b>49</b>
<b>VICTIMS AND RESTITUTION.....</b>	<b>50</b>
<b>COURT ACTIVITY.....</b>	<b>51</b>
2004 PETITIONS FILED.....	51
2004 COURT HEARING SUMMARY .....	52
COURT HEARINGS SCHEDULED 2000 – 2004.....	53
<b>TOP 20 ZIP CODES.....</b>	<b>54</b>
<b>MARICOPA COUNTY ZIP CODES OF RESIDENCE BY CITY FOR 2004 REFERRALS.....</b>	<b>55</b>
<b>ARIZONA COUNTIES ZIP CODES FOR 2004 REFERRALS.....</b>	<b>59</b>
<b>SCHOOL DISTRICTS OF JUVENILES REFERRED .....</b>	<b>60</b>
ELEMENTARY DISTRICTS.....	60
HIGH SCHOOL DISTRICTS .....	61
UNIFIED DISTRICTS .....	61
MISCELLANEOUS SCHOOLS .....	61
<b>MAPS BY ZIP CODE .....</b>	<b>62</b>
JUVENILE REFERRALS BY ZIP CODE .....	62
JUVENILE VIOLENT REFERRALS BY ZIP CODE .....	63
JUVENILE DRUG REFERRALS BY ZIP CODE .....	64

# HOW MARICOPA COUNTY'S JUVENILE JUSTICE SYSTEM WORKS

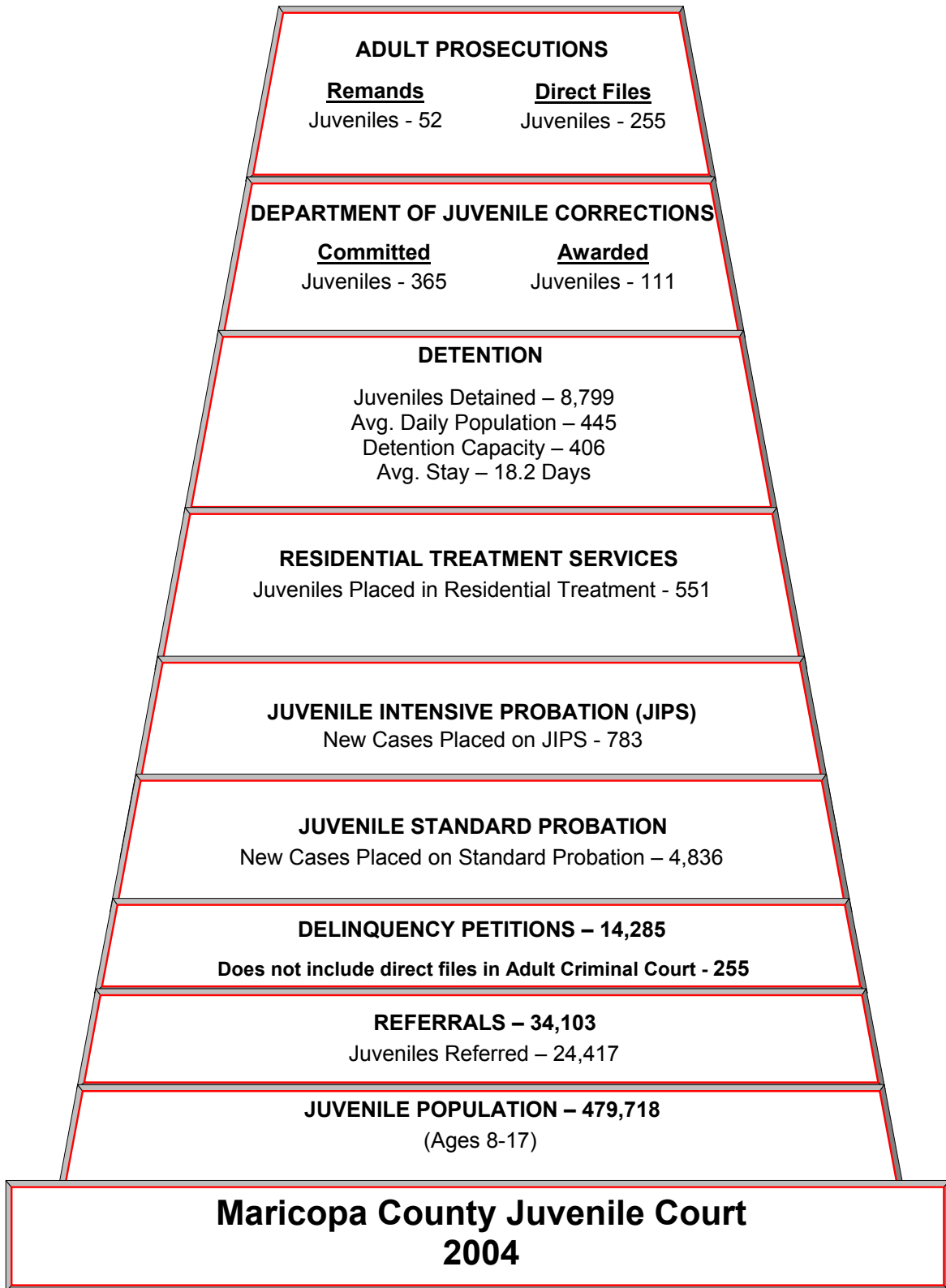


## STATE AND COUNTY STATISTICS/JUVENILE POPULATION



- Arizona is geographically the 6<sup>th</sup> largest state in the nation with 113,642 square miles and a population of 5,743,834 in 15 counties.
- Maricopa County is the 4<sup>th</sup> most populated county in the nation with 9,204 square miles, and a population of 3,501,001 (DES estimate, July 2004).
- Approximately 61% of the state's population resides in Maricopa County.
- There are 380 residents per square mile.
- Phoenix (population 1,416,055) is the county seat, state capital, and the largest city in the state.
- Other major cities in Maricopa County are: Mesa (447,130); Glendale (233,330); Scottsdale (221,130); Chandler (220,705); Gilbert (164,685); Tempe (160,820); and Peoria (132,300).

# STATISTICAL SUMMARY CHART



## WORKLOAD STATISTICS SUMMARY

<b>Juvenile Population</b>	<b>2000</b>	<b>2001</b>	<b>2002</b>	<b>2003</b>	<b>2004</b>
Estimate of County Population Under 18	828,003	860,352	861,454	878,683	896,257
Estimate of County Population 8 through 17	460,002	477,973	461,090	470,311	479,718

<b>Referrals Received</b>	<b>2000</b>	<b>2001</b>	<b>2002</b>	<b>2003</b>	<b>2004</b>
Incorrigibility/Delinquent Referrals Received	36,010	36,725	34,844	34,425	34,103
Juveniles Referred	24,614	25,761	24,695	24,528	24,417
Referrals per Juvenile	1.46	1.43	1.41	1.40	1.40

<b>Dispositions</b>	<b>2000</b>	<b>2001</b>	<b>2002</b>	<b>2003</b>	<b>2004</b>
Juveniles Placed on Standard Probation	5,569	5,414	4,990	4,685	4,836
Juveniles Committed to Dept. of Juvenile Corrections (ADJC)	416	341	293	362	365
Juveniles Remanded to Adult Court	53	35	63	54	52
Juveniles Filed Directly in Criminal (Adult) Court	375	340	278	241	255

<b>Detention</b>	<b>2000</b>	<b>2001</b>	<b>2002</b>	<b>2003</b>	<b>2004</b>
Juveniles Brought to Detention	10,616	10,484	10,214	10,097	9,711
Juveniles Detained	10,159	10,069	9,850	9,352	8,799
Percent Detained	95.7%	96.0%	96.4%	92.6%	90.6%
Average Daily Population	397	404	401	411	445
Detention Capacity at Year End	357	357	357	357	406
Average Length of Stay in Detention (Days)	14	14.4	14.7	15.5	18.2

## WORKLOAD STATISTICS SUMMARY

<b>Petitions Filed</b>	<b>2000</b>	<b>2001</b>	<b>2002</b>	<b>2003</b>	<b>2004</b>
Adoption	999	956	935	929	1,063
Severance	323	288	465	246	298
Dependency	1,003	952	1,145	1,621	1,813
Delinquency/Incorrigibility	17,355	15,847	14,400	14,244	14,285
Adult Criminal	396	365	365	258	274
Guardianship	0	0	0	0	224
Miscellaneous	520	534	532	660	637
<b>Total Petitions Filed</b>	<b>20,596</b>	<b>18,942</b>	<b>17,642</b>	<b>17,958</b>	<b>18,594</b>

<b>Court Hearings Scheduled</b>	<b>2000</b>	<b>2001</b>	<b>2002</b>	<b>2003</b>	<b>2004</b>
Adoption	1,755	1,484	1,391	1,603	1,379
Severance	1,604	1,081	1,090	947	863
Dependency	18,730	18,382	20,106	25,360	32,381
Delinquency/Incorrigibility	55,591	54,896	53,295	51,676	52,819
Non-Petition	827	973	784	745	865
<b>Total Hearings Scheduled</b>	<b>78,507</b>	<b>76,816</b>	<b>76,666</b>	<b>80,331</b>	<b>88,307</b>



## FINANCIAL SUMMARY

By Fiscal Year

<b>County</b>	<b>2000-2001</b>	<b>2001-2002</b>	<b>2002-2003</b>	<b>2003-2004</b>	<b>2004-2005</b>
General Fund	10,690,320	10,411,176	11,038,061	11,434,357	12,180,474
Detention Fund	12,302,227	12,571,824	13,042,976	17,316,5694	24,958,338
<b>Total</b>	<b>22,992,547</b>	<b>22,983,000</b>	<b>24,081,036</b>	<b>28,750,926</b>	<b>37,138,812</b>

<b>State Grants</b>	<b>2000-2001</b>	<b>2001-2002</b>	<b>2002-2003</b>	<b>2003-2004</b>	<b>2004-2005</b>
Arizona Community Foundation	15,000	10,000	0	10,000	0
Court Improvement	37,928	39,846	39,522	37,640	43,474
Diversion Consequences	1,617,256	1,419,245	1,414,460	1,701,813	1,532,001
Diversion Intake	1,369,784	1,339,173	1,347,813	1,383,944	1,374,556
Drug Court	0	83,008	69,542	43,299	0
Family Counseling	326,108	355,919	352,654	342,439	347,756
First Step/Step Ahead	89,456	32,704	0	0	0
First Cuts	299,991	407,726	395,744	0	0
JIPS	3,481,468	3,630,917	3,704,361	3,793,790	3,899,147
JIPS Treatment Services	810,000	829,800	415,590	390,605	532,000
JIPS VIPS	332,000	298,053	23,553	0	0
JPSF Treatment (formerly Foster Care)	10,958,079	11,601,270	9,141,145	10,589,094	9,988,812
Juvenile Crime Reduction Fund	16,382	*	191,207	6,000	6,000
Juvenile Transfer Grant	0	44,394	35,962	0	0
Juvenile Treatment Services	229,423	240,076	235,310	153,646	195,880
Safe Schools	1,129,304	1,283,588	1,409,198	1,420,871	1,759,287
Standard Probation	3,842,334	3,910,574	3,732,186	3,745,157	3,727,095
Two Hundred Kids	0	46,197	0	0	0
Victims Rights	134,483	131,646	127,700	117,335	119,625
Voc Rehab	70,000	70,000	70,000	70,000	70,000
<b>Total</b>	<b>24,758,996</b>	<b>25,774,136</b>	<b>22,705,946</b>	<b>23,795,633</b>	<b>23,595,633</b>

## FINANCIAL SUMMARY

By Fiscal Year

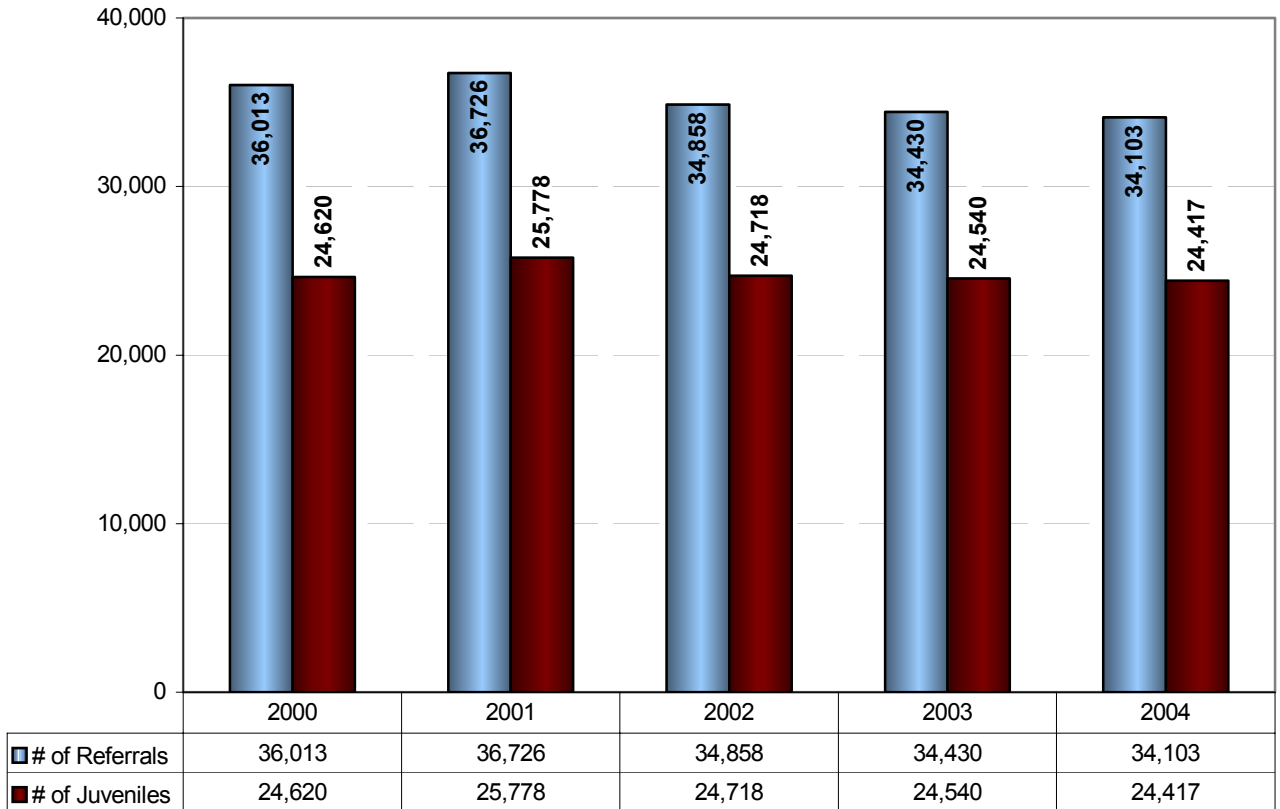
<b>Federal Grants</b>	<b>2000-2001</b>	<b>2001-2002</b>	<b>2002-2003</b>	<b>2003-2004</b>	<b>2004-2005</b>
Aftercare	0	0	6,918	83,333	0
BJA	574,703	749,677	407,794	300,928	858,691
Bulletproof Vest	0	10,624	4,679	18,915	0
Drug Court	0	15,690	79,135	127,391	0
JAIBG	781,085	3,429,515	1,905,162	1,805,305	1,400,311
Project Payback	0	0	34,109	0	0
SOAR	0	133,137	88,642	171,440	82,700
Food & Nutrition	436,251	458,064	544,090	525,000	529,065
School Violence Prevention	0	117,054	266,613	0	0
Sunnyslope Action Initiative	0	260,762	55,905	0	0
<b>Total</b>	<b>1,792,039</b>	<b>5,174,523</b>	<b>3,393,048</b>	<b>3,032,312</b>	<b>2,870,767</b>

<b>Service Fees</b>	<b>2000-2001</b>	<b>2001-2002</b>	<b>2002-2003</b>	<b>2003-2004</b>	<b>2004-2005</b>
Probation Fees	1,263,530	1,009,894	778,399	831,160	1,000,000
Diversion Fees	393,300	196,237	183,486	216,400	268,425
Juvenile Probation Capital Fund	0	325,924	506,121	642,622	392,535
Juvenile Restitution Fund	0	0	1,144	49,515	50,000
<b>Total</b>	<b>1,656,830</b>	<b>1,532,055</b>	<b>1,469,149</b>	<b>1,739,697</b>	<b>1,710,960</b>

	<b>2000-2001</b>	<b>2001-2002</b>	<b>2002-2003</b>	<b>2003-2004</b>	<b>2004-2005</b>
All Grants and Fees	28,207,865	32,480,714	27,568,143	28,883,413	27,103,308
County Funds	22,992,547	22,983,000	24,081,036	28,750,926	37,138,812
<b>Total Budget</b>	<b>51,200,412</b>	<b>55,463,714</b>	<b>51,649,180</b>	<b>57,634,339</b>	<b>64,242,120</b>

## COMPLAINTS RECEIVED 2000 – 2004

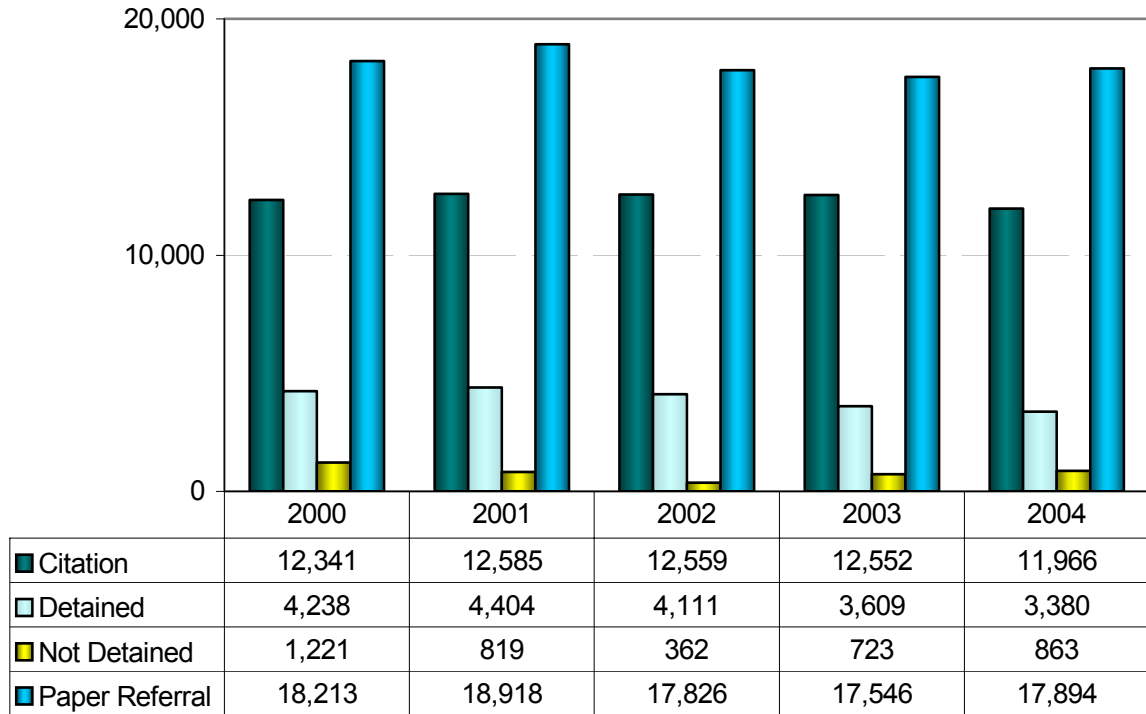
### COMPLAINTS/JUVENILES



In 2004, there were an estimated 479,718 juveniles between the ages of 8 and 17 living in Maricopa County. In any given year, about 5% of the juvenile population between the ages of 8 and 17 of Maricopa County are referred at least once to the Juvenile Court. That's about one juvenile in every 19. In 2004, there were 34,103 referrals generated by 24,417 juveniles, which computes to 1.40 referrals per juvenile. Since 2000, the number of complaints has dropped by 5%. The average number of complaints per juvenile (1.40) has also dropped slightly from 1.46 in 2000.

## COMPLAINTS RECEIVED 2000 – 2004

### TYPE OF COMPLAINT



There are four types of complaints:

- Citation: Child is issued a citation (ticket).
- Detained: Child is detained at detention center.
- Not Detained: Child is brought to detention center, screened and released for follow-up.
- Paper: Report is sent to the Probation Department and the County Attorney for processing.

	2000	2001	2002	2003	2004
<b>Citation</b>	<b>12,341</b>	<b>12,585</b>	<b>12,559</b>	<b>12,552</b>	<b>11,966</b>
	34.21%	34.30%	36.03%	36.46%	35.09%
<b>Detained</b>	<b>4,238</b>	<b>4,404</b>	<b>4,111</b>	<b>3,609</b>	<b>3,380</b>
	11.76%	12.00%	11.79%	10.48%	9.91%
<b>Not Detained</b>	<b>1,221</b>	<b>819</b>	<b>362</b>	<b>723</b>	<b>863</b>
	3.39%	2.20%	1.04%	2.10%	2.53%
<b>Paper Referral</b>	<b>18,213</b>	<b>18,918</b>	<b>17,826</b>	<b>17,546</b>	<b>17,894</b>
	50.57%	51.50%	51.14%	50.96%	52.47%
<b>Total</b>	<b>36,013</b>	<b>36,726</b>	<b>34,858</b>	<b>34,430</b>	<b>34,103</b>

**COMPLAINTS RECEIVED 2000 – 2004**  
**TEN MOST COMMON OFFENSES**

Offenses	2004 Total	
Truancy	4,071	18.2%
Shoplifting - Misdemeanor	3,589	16.0%
Violation of Probation	2,852	12.7%
Alcohol	2,771	12.4%
Traffic Violation	2,456	11.0%
Curfew	1,996	8.9%
Possess Marijuana	1,591	7.1%
Assault - Domestic Violence	1,153	5.2%
Assault - Simple	1,058	4.7%
Runaway	849	3.8%
<b>Totals</b>	<b>22,386</b>	<b>100.0%</b>

The frequency of various offenses has changed noticeably in recent years. Most of these changes are the result of program changes made by the Juvenile Court. Truancy was the most common offense in 2004. Truancy complaints more than doubled from 1998 (2,003) to 2001 (5,117) and then began declining. This is because the Juvenile Probation Department has been working with schools to develop programs for truants. Research has shown that truancy is a significant pre-cursor to more serious delinquent behavior.

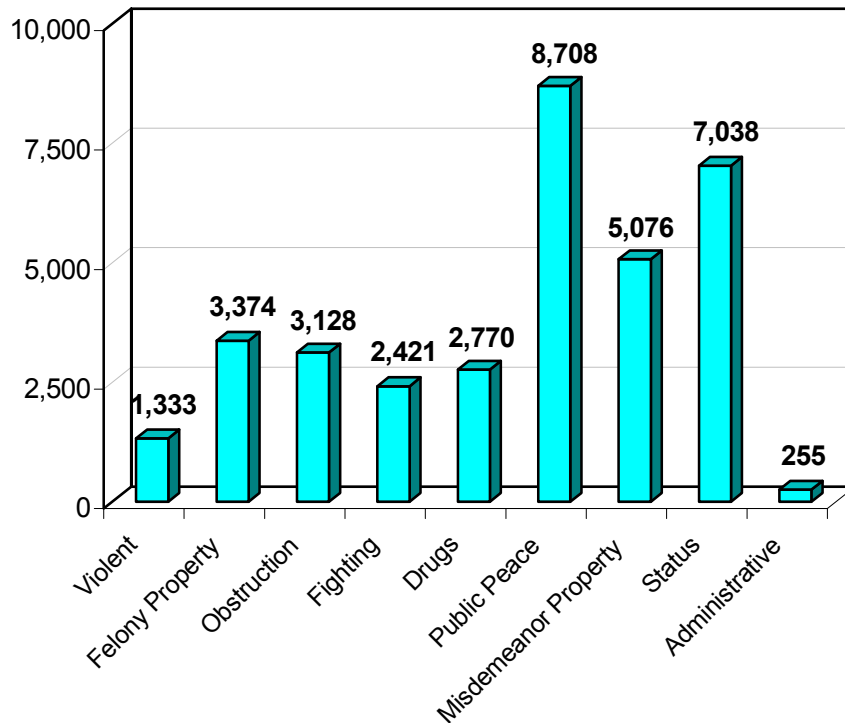
Incorrigibility, which had been a top ten offense nearly every year-ranging from 800 to 1000 each year-dropped from the top ten in 2002 to a low of only 1. In late 2001, the Probation Department started the FINS program for families with parent-child relation problems. Its focus is to give the family the tools to solve their problems without having to involve the juvenile court or identify the child as incorrigible.

**COMPARISON – MOST COMMON OFFENSES 2000 – 2004**

Offense	2000	2001	2002	2003	2004
Truancy	4,708	5,117	4,413	3,939	4,071
Shoplifting - Misdemeanor	3,861	3,775	3,529	3,401	3,589
Violation of Probation	3,277	2,633	3,482	3,147	2,852
Alcohol	2,064	2,458	2,540	2,837	2,771
Traffic Violation	2,027	2,365	2,610	2,685	2,456
Curfew	3,270	3,414	2,458	2,519	1,996
Possess Marijuana	1,326	1,538	1,274	1,580	1,591
Assault - Domestic Violence	1,081	1,060	1,063	1,099	1,153
Assault - Simple	1,053	1,044	1,012	1,099	1,058
Runaway	877	738	862	783	849
<b>Total</b>	<b>23,544</b>	<b>24,142</b>	<b>23,243</b>	<b>23,089</b>	<b>22,386</b>

## COMPLAINTS RECEIVED 2004

### SEVERITY TYPE OF OFFENSE



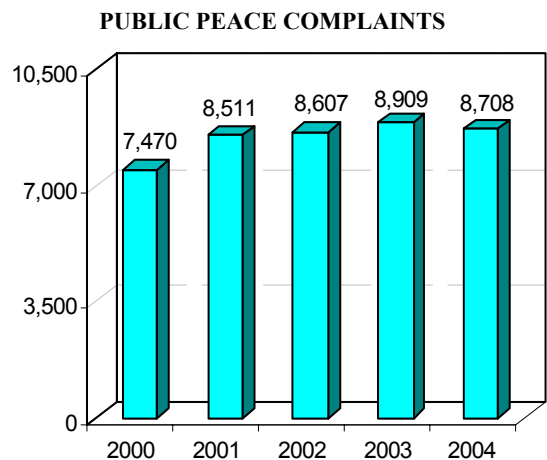
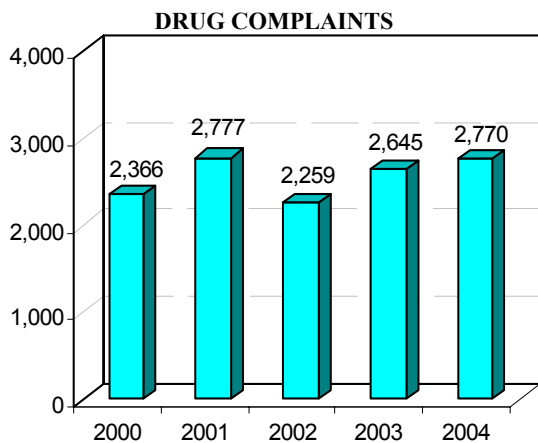
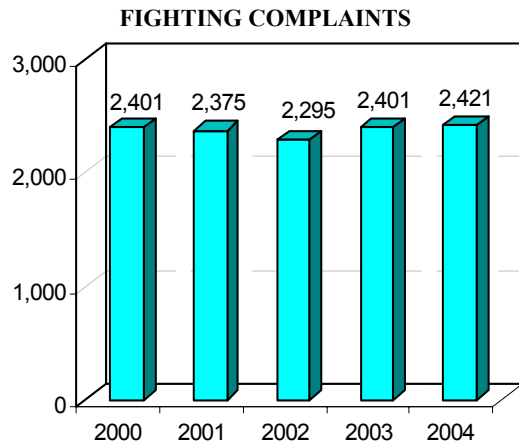
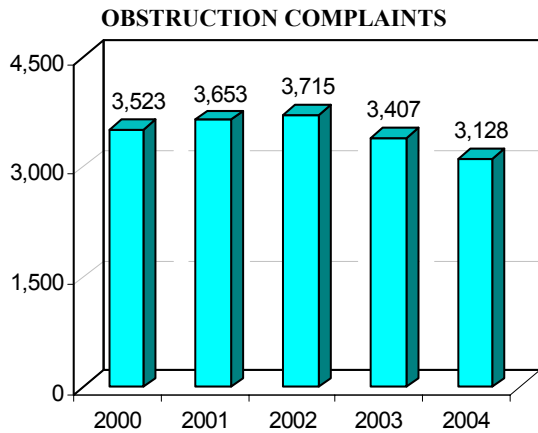
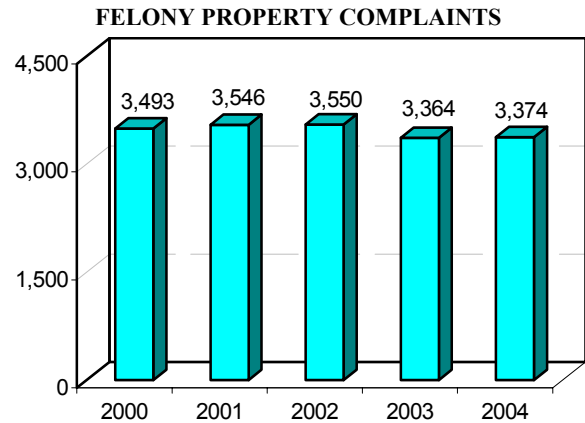
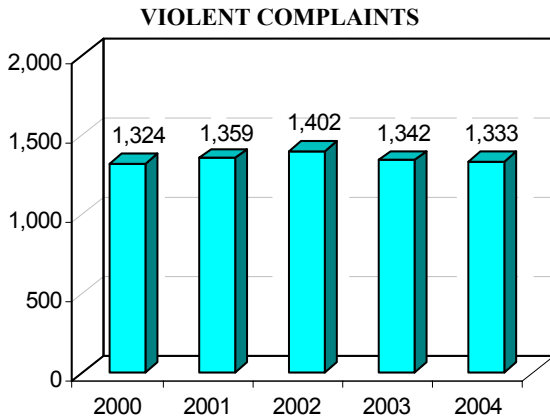
There are literally hundreds of different types of offenses that are sent to the Juvenile Court each year. To analyze these offenses more efficiently each offense has been placed into one of nine severity types. Here are the nine types in descending order of severity:

- Violent**                    These are felony offenses against persons such as murder, aggravated assault, or robbery.
- Felony Property**        These are felony offenses in which property is damaged or stolen, and the property is worth more than \$250. Examples are burglary, theft, forgery, criminal damage, or graffiti.
- Obstruction**                These offenses are illegal acts that impede the enforcement of justice. For juveniles, 75% of these offenses are a violation of the terms of probation.
- Fighting**                    These are misdemeanor offenses against persons, such as simple assault.
- Drugs**                        These are offenses that involve the use or sale of any drug, and are almost always felonies. Paint and glue sniffing are included here.
- Public Peace \***            These offenses are generally misdemeanors, and involve acts like disorderly conduct, giving false information, trespass, weapons misconduct, and possession of alcohol.
- Misdemeanor Property**    These are property offenses in which the property is valued less than \$250. The most common offenses are shoplifting and criminal damage.
- Status \***                    These offenses are acts that are illegal only because a juvenile commits them, such as: incorrigibility, truancy, runaway, and curfew.
- Administrative**            These are not illegal offenses, but are creations of the court which help record the court's involvement with a juvenile in certain situations, such as holding a juvenile for another jurisdiction or agency, or conducting a hearing on a matter transferred from another jurisdiction.

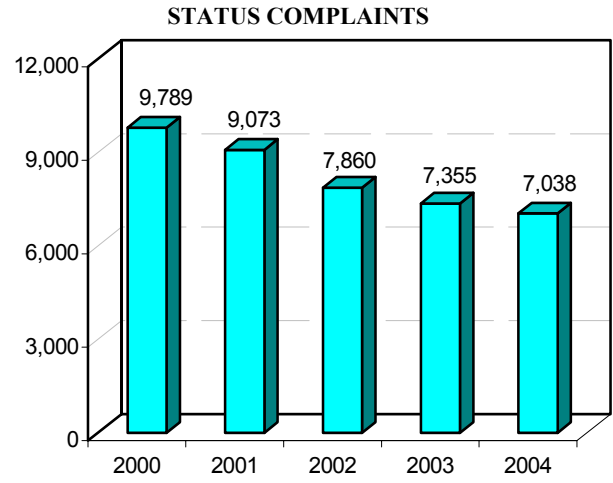
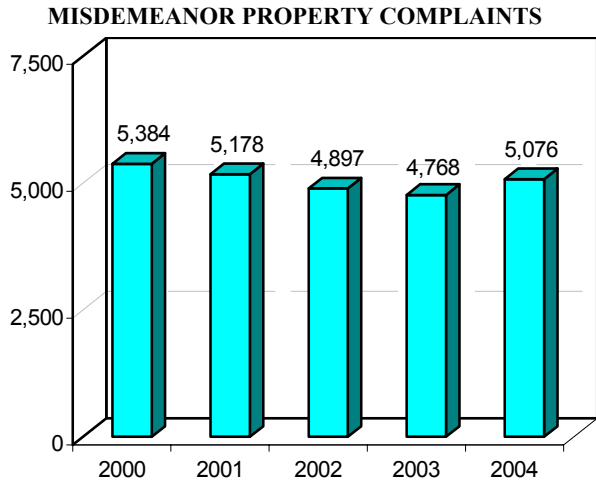
\* In 1998, possession or use of alcohol was re-classified from a status offense to a misdemeanor and was moved to Public Peace severity type from Status severity type.

## COMPLAINTS RECEIVED 2000 – 2004 SEVERITY TYPE OF OFFENSE

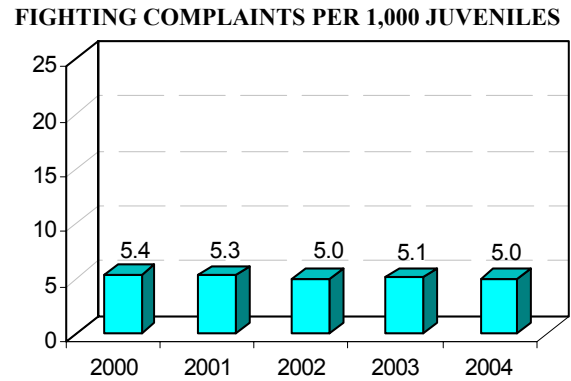
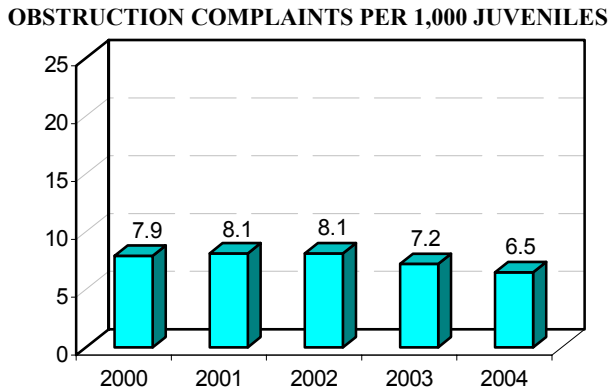
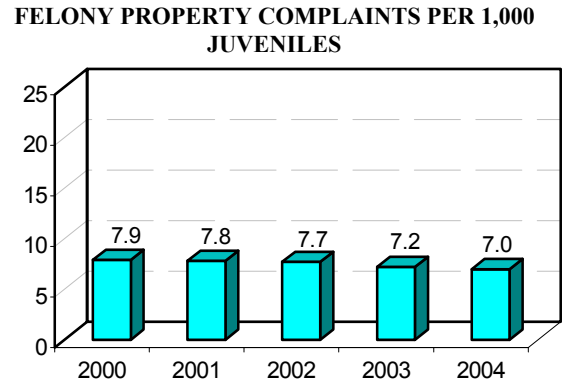
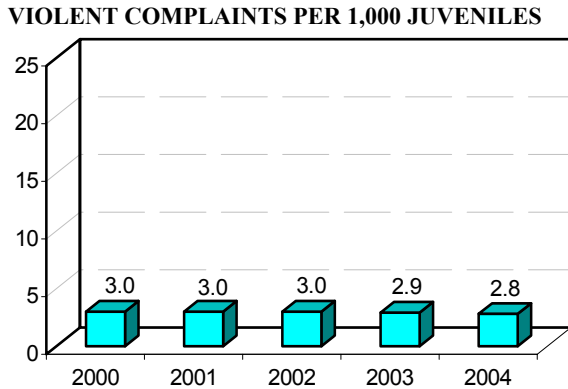
The graphs on this and the next page show the trends among offenses in the past five years. Felony offenses (Violent and Felony Property) have remained fairly constant while Drug Complaints have increased in the past two years.



## COMPLAINTS RECEIVED 2000 – 2004 SEVERITY TYPE OF OFFENSE



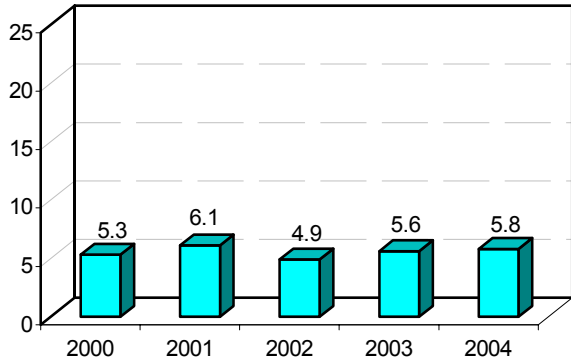
## COMPLAINTS RECEIVED PER 1,000 JUVENILES 2000 – 2004 SEVERITY TYPE OF OFFENSE



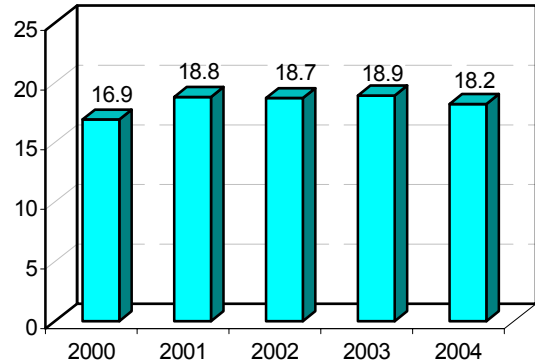


## COMPLAINTS RECEIVED PER 1,000 JUVENILES 2000 – 2004 SEVERITY TYPE OF OFFENSE

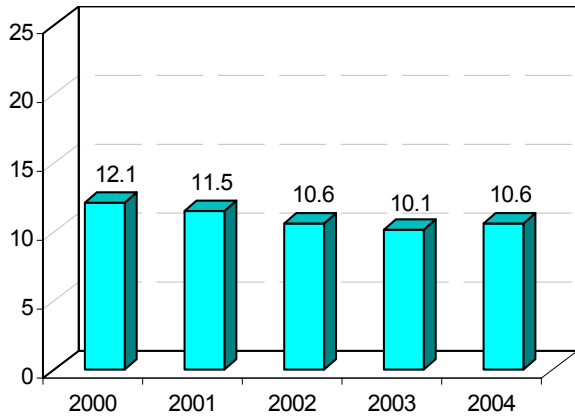
**DRUG COMPLAINTS PER 1,000 JUVENILES**



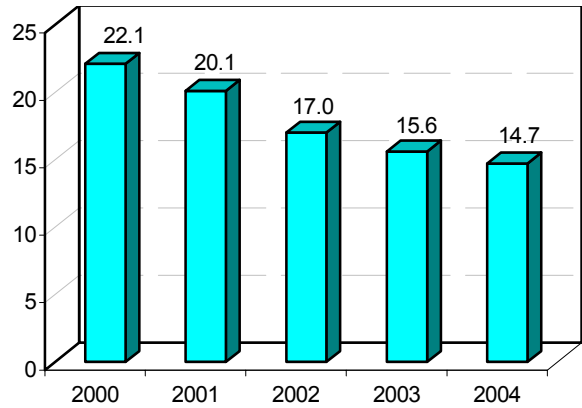
**PUBLIC PEACE COMPLAINTS PER 1,000 JUVENILES**



**MISDEMEANOR PROPERTY COMPLAINTS PER 1,000 JUVENILES**



**STATUS COMPLAINTS PER 1,000 JUVENILES**



## COMPLAINTS RECEIVED 2000 – 2004

### MOST SEVERE OFFENSE PER COMPLAINT

<b>Violent Offenses</b>	<b>2000</b>	<b>2001</b>	<b>2002</b>	<b>2003</b>	<b>2004</b>
Aggravated Assault - Domestic Violence	151	145	168	178	178
Aggravated Assault	425	427	415	416	435
Aggravated Assault with a Weapon	210	218	234	203	176
Arson-Occupied Structure	27	24	30	13	16
Child Abuse - Felony	6	4	11	4	3
Child Molest	84	97	83	87	104
Custodial Interference - Felony	1	1	2	0	1
Drive By Shooting	26	10	26	12	18
Gang/Syndicate Participation	5	0	0	0	0
Harrassment/Terrorism - Felony	2	0	2	0	3
Kidnap	10	18	19	17	13
Murder/Homicide/Manslaughter	12	23	19	19	28
Obscenity	1	0	0	0	0
Poisoning	0	2	3	5	1
Robbery	108	83	77	75	95
Robbery - Armed	103	146	123	127	100
Sexual Abuse - Felony	90	102	118	105	116
Sexual Assault - Felony	17	26	20	25	25
Threats - Felony	46	33	52	56	21
<b>Violent Totals</b>	<b>1,324</b>	<b>1,359</b>	<b>1,402</b>	<b>1,342</b>	<b>1,333</b>

<b>Felony Property Offenses</b>	<b>2000</b>	<b>2001</b>	<b>2002</b>	<b>2003</b>	<b>2004</b>
Arson-Unoccupied Structure - Felony	21	28	20	17	14
Burglary 1 - Armed	61	58	35	63	44
Burglary 2 - Residential	466	414	393	423	411
Burglary 3 - Non-residential	739	688	705	624	590
Burglary-Possession Tools - Felony	26	18	21	21	25
Chop Shop Participation	0	0	2	2	3
Credit Card - Theft/Fraud - Felony	44	43	45	34	42
Criminal Damage - Domestic Violence - Felony	66	88	73	84	66
Criminal Damage - Felony	314	328	356	377	368
Criminal Damage - Aggravated - Felony	109	111	120	133	135
Criminal Damage - Graffiti-Felony	60	66	82	51	64
Extortion - Felony	3	1	2	1	1
Forgery - Felony	92	108	88	79	71
Fraud	44	93	52	28	30
Littering/Polluting - Felony	0	0	0	2	2
Possess Stolen Property - Felony	74	66	49	57	46
Shoplifting - Felony	121	151	206	133	186
Taking Identity of Another	0	0	6	0	0
Theft - Felony	342	307	324	208	244
Theft from Mail - Felony	1	3	4	7	6
Theft Means of Transportation	596	594	599	693	657
Theft of Vehicle - Felony	11	19	8	6	5
Unlawful Use Transportation - Felony	303	362	360	321	364
<b>Felony Property Totals</b>	<b>3,493</b>	<b>3,546</b>	<b>3,550</b>	<b>3,364</b>	<b>3,374</b>

**COMPLAINTS RECEIVED 2000 – 2004**  
**MOST SEVERE OFFENSE PER COMPLAINT**

<b>Obstruction Offenses</b>	<b>2000</b>	<b>2001</b>	<b>2002</b>	<b>2003</b>	<b>2004</b>
Bribery - Felony	0	1	0	0	0
Compound Felony	0	0	0	0	0
City Ordinance	0	4	0	0	0
Contempt of Court	1	1	1	0	1
Contraband	0	6	0	0	0
Escape	40	63	86	106	103
Failure to Obey Police	15	21	40	34	39
Hindering Prosecution	33	32	25	17	17
Obstruct Criminal Investigation	14	16	10	13	12
Obstruct Government Operations	27	15	13	18	18
Resisting Arrest	73	88	58	72	86
Violation of Probation	2,978	3,277	3,482	3,147	2,852
<b>Obstruction Offenses</b>	<b>3,181</b>	<b>3,524</b>	<b>3,715</b>	<b>3,407</b>	<b>3,128</b>

<b>Fighting Offenses</b>	<b>2000</b>	<b>2001</b>	<b>2002</b>	<b>2003</b>	<b>2004</b>
Aggravated Assault - Participation	3	2	1	3	1
Assault - Domestic Violence	1,081	1,060	1,063	1,099	1,153
Assault - Simple	1,053	1,044	1,012	1,099	1,058
Custodial Interference-Misdemeanor	1	0	0	0	0
Endangerment	18	14	21	31	26
Threats - Misdemeanor	242	253	198	166	183
Unlawful Imprisonment - Misdemeanor	0	2	0	3	0
<b>Fighting Totals</b>	<b>2,398</b>	<b>2,375</b>	<b>2,295</b>	<b>2,401</b>	<b>2,421</b>

<b>Drug Offenses</b>	<b>2000</b>	<b>2001</b>	<b>2002</b>	<b>2003</b>	<b>2004</b>
Contraband Drugs	5	0	0	0	0
Dangerous Drugs	81	139	136	193	175
Drug Paraphernalia	446	496	424	448	450
Drugs on School Grounds	221	302	163	220	304
Illegal Vapors	64	52	54	28	23
Imitation Substances	6	8	1	0	3
Involving Minor in Drugs	1	2	1	0	3
Narcotics - Possess/Sell	143	143	108	94	103
Possess Marijuana	1,326	1,538	1,274	1,580	1,591
Possess Marijuana for Sale	55	63	61	51	56
Prescription Drugs	17	34	37	31	62
Using Facilities for Drugs	1	0	0	0	0
<b>Drug Totals</b>	<b>2,366</b>	<b>2,777</b>	<b>2,259</b>	<b>2,645</b>	<b>2,770</b>

**COMPLAINTS RECEIVED 2000 – 2004**  
**MOST SEVERE OFFENSE PER COMPLAINT**

<b>Public Peace Offenses</b>	<b>2000</b>	<b>2001</b>	<b>2,002</b>	<b>2003</b>	<b>2004</b>
Alcohol	2,064	2,458	2,598	2,837	2,771
Boating Offense	27	75	40	73	88
City Ordinance	129	241	304	179	286
Contraband in Secure Facility	1	10	3	4	7
Criminal Damage - Misdemeanor	0	0	0	0	1
Criminal Nuisance	15	14	2	26	10
Criminal Trespass	543	645	583	548	589
Cruelty to Animals	7	6	3	8	11
Discharge Firearm - Non-Residential Bldg	1	2	2	0	0
Disorderly Conduct	591	500	512	495	472
Disturbing the Peace - Domestic Violence	372	367	363	336	405
Driving While Intoxicated	161	226	229	245	269
Explosives Misconduct	8	2	2	5	2
False Report	266	254	255	319	248
Felony Flight	24	27	20	20	13
Firearms Possession by a Minor	31	21	18	40	35
Fireworks	25	31	13	21	10
Game and Fish	19	29	43	26	17
Gang/Syndicate Participation	25	18	14	8	24
Graffiti Tools	9	8	6	12	8
Interfere with Judicial Proceedings	44	58	54	48	71
Leaving an Accident	27	22	14	30	15
Lewd Behavior - Felony	3	5	6	11	6
Lewd Behavior - Misdemeanor	29	18	21	25	16
Loitering	7	1	5	5	5
Neglect/Exploit a Minor	4	12	6	4	6
Obscenity	2	0	2	1	3
Prostitution	42	23	39	51	42
Reckless Burning	26	38	58	46	31
School Interference	133	284	180	214	140
Stalking	0	0	2	1	0
Teacher Abuse	1	0	0	0	0
Tobacco	611	517	386	389	417
Traffic Violation	2,028	2,365	2,612	2,685	2,456
Unlawful use of Telephone	30	21	30	29	33
Weapons Misconduct - Felony	66	86	71	73	83
Weapons Misconduct - Gang	30	35	28	32	46
Weapons Misconduct - Misdemeanor	80	92	83	63	72
<b>Public Peace Totals</b>	<b>7,481</b>	<b>8,511</b>	<b>8,607</b>	<b>8,909</b>	<b>8,708</b>

## COMPLAINTS RECEIVED 2000 – 2004 MOST SEVERE OFFENSE PER COMPLAINT

<b>Misdemeanor Property Offenses</b>	<b>2000</b>	<b>2001</b>	<b>2,002</b>	<b>2003</b>	<b>2004</b>
Arson - Unoccupied Structure - Misdemeanor	4	2	3	1	5
Burglary 3 - Non-Residential	1	3	4	5	4
Credit Card - Theft/Fraud - Misdemeanor	7	3	5	5	5
Criminal Damage - Domestic Violence	292	325	322	349	359
Criminal Damage - Misdemeanor	385	340	316	293	312
Criminal Damage - Aggravated - Misdemeanor	1	0	0	0	0
Criminal Damage - Graffiti - Misdemeanor	104	123	158	133	140
Forgery - Misdemeanor	0	0	0	0	0
Fraud	0	1	0	1	1
Littering/Polluting - Misdemeanor	24	19	16	15	22
Possess Stolen Property - Misdemeanor	44	41	27	17	27
Rented Property Misuse - Misdemeanor	0	0	0	0	0
Shoplifting - Misdemeanor	3,861	3,775	3,529	3,401	3,589
Theft - Misdemeanor	659	544	513	548	610
Theft from Mail - Misdemeanor	0	0	0	0	0
Theft of Vehicle - Misdemeanor	1	0	0	0	1
Unlawful Use Transportation Misdemeanor	1	2	4	0	1
<b>Misdemeanor Property Totals</b>	<b>5,384</b>	<b>5,178</b>	<b>4,897</b>	<b>4,768</b>	<b>5,076</b>

<b>Status Offenses</b>	<b>2000</b>	<b>2001</b>	<b>2002</b>	<b>2003</b>	<b>2004</b>
Curfew	3,270	2,633	2,458	2,519	1,996
Incorrigible	877	481	27	1	15
Runaway	812	738	862	783	849
Runaway - For other jurisdiction (FOJ)	122	104	100	113	107
Truancy	4,708	5,117	4,413	3,939	4,071
<b>Status Totals</b>	<b>9,789</b>	<b>9,073</b>	<b>7,860</b>	<b>7,355</b>	<b>7,038</b>

<b>Administrative Offenses</b>	<b>2000</b>	<b>2001</b>	<b>2002</b>	<b>2003</b>	<b>2004</b>
Administrative	6	7	14	1	0
Courtesy Supervision	63	46	44	38	52
Transfer for Hearing	15	17	33	29	35
Transfer - Probation Supervision	97	107	105	107	95
Warrant	46	77	77	64	73
<b>Administrative Totals</b>	<b>227</b>	<b>254</b>	<b>273</b>	<b>239</b>	<b>255</b>

## DISPOSITION OF COMPLAINTS 2000 – 2004

(Based on Disposition Date)\*

### NON-COURT DISPOSITIONS

		2000	2001	2002	2003	2004
<b>Administrative</b>	Invalid	21	6	9	3	0
	Withdrawn	0	1	1	1	2
	Non-Complaint Completed	0	0	2	0	0
	Released (Traffic or Delinquency Warrant)	29	26	40	32	41
<b>Record Only</b>	Not Interviewed	407	418	322	274	304
	Pending Adult	1	3	7	11	1
	Referred - Diversion Program	41	9	9	1	0
	County Attorney Choose Not To File	1,593	1,608	1,530	1,646	1,559
	Referred Limited Jurisdiction Court	2	29	162	106	94
	Referred - Other Agency	0	1	0	0	0
	Referred - Other Jurisdiction	85	39	33	0	0
	Referred - Police Agency	978	876	834	927	833
	Referred -ADJC (Az Dept of Juv Corrections)	39	21	27	53	46
<b>Interviewed</b>	Adjusted Counsel & Warn	35	9	5	0	3
	Adjusted – Conditional	8,892	9,076	8,947	9,311	9,048
	Adjusted – From Other Jurisdiction	84	108	107	123	123
	Adjusted - Not Filed by County Attorney	1,147	1,184	880	768	754
	Adjusted	667	916	835	603	491
	Adjusted – Plea	89	30	44	32	37
<b>Non Court</b>	Loss of Jurisdiction	1,758	1,921	2,260	2,416	2,324
<b>Total Non-Court Dispositions</b>		<b>15,868</b>	<b>16,281</b>	<b>16,054</b>	<b>16,307</b>	<b>15,660</b>

\* In the past these numbers were based on dispositions of complaints filed during the year. As of 2004, they now reflect the total count of dispositions for each year.

## DISPOSITION OF COMPLAINTS 2000 – 2004

(Based on Disposition Date)\*

### COURT DISPOSITIONS

		2000	2001	2002	2003	2004
<b>Dismissed</b>	Dismissed	6,083	6,250	5,071	4,788	5,002
<b>Terminate &amp; Close</b>	Terminate & Close	125	141	140	138	135
<b>Penalty</b>	Penalty	383	314	265	193	182
<b>Probation</b>	Probation (Standard & JIPS)	5,393	5,197	4,914	4,313	4,523
	Probation with Restitution	355	243	299	557	514
	Continued Probation	3,447	3,943	3,759	3,511	3,182
	Continued Probation - Restitution	124	72	115	214	189
	Courtesy Probation	160	152	146	145	150
<b>ADJC</b>	Committed – ADJC	515	410	376	471	470
	Awarded – ADJC	143	151	139	112	126
<b>Transferred</b>	To Other Jurisdiction	106	74	59	91	72
<b>Remanded</b>	To Adult Court	62	45	72	59	54
<b>Limited Jurisdiction Court</b>	Guilty	982	1,166	711	577	667
	Not Guilty	2	0	0	0	1
<b>Total Court Dispositions</b>		<b>17,880</b>	<b>18,158</b>	<b>16,066</b>	<b>15,169</b>	<b>15,267</b>

\* In the past these numbers were based on dispositions of complaints filed during the year. They now reflect the total count of dispositions for each year.

### ADULT CRIMINAL DISPOSITIONS

(Based on Disposition Date)\*

		2000	2001	2002	2003	2004
<b>Dismissed</b>		44	21	24	22	12
<b>Probation</b>		64	67	52	49	32
<b>Jail**</b>		182	161	106	67	58
<b>Prison**</b>		115	116	93	52	42
<b>Pending Trial</b>		86	32	149	105	113
<b>Pending Sentencing***</b>		14	29	24	30	25
<b>Total Adult Criminal Dispositions</b>		<b>505</b>	<b>426</b>	<b>448</b>	<b>325</b>	<b>282</b>

\* In the past these numbers were based on dispositions of complaints filed during the year. They now reflect the total count of dispositions for each year.

\*\* May include Time on Probation

\*\*\* Direct Files Only

**REFERRAL SOURCE  
SOURCE OF COMPLAINT 2004**

	<b>Count</b>	<b>Percent</b>
Phoenix Police Department	8,595	25.20%
Mesa Police Department	3,797	11.13%
School	3,407	9.99%
Probation Officer	2,878	8.44%
Tempe Police Department	2,371	6.95%
Glendale Police Department	2,362	6.93%
Chandler Police Department	1,985	5.82%
Maricopa County Sheriff	1,629	4.78%
Scottsdale Police Department	1,495	4.38%
Gilbert Police Department	1,030	3.02%
Peoria Police Department	756	2.22%
AIM (Attendance is Mandatory Program)	569	1.67%
Department of Public Safety	567	1.66%
Surprise Police Department	548	1.61%
Avondale Police Department	527	1.55%
Goodyear Police Department	313	0.92%
Tolleson Police Department	239	0.70%
El Mirage Police Department	228	0.67%
Other Law Enforcement	225	0.66%
Buckeye Police Department	174	0.51%
Youngtown Police Department	95	0.28%
Other Arizona County	90	0.26%
Surveillance Officer	65	0.19%
State Department of Corrections	64	0.19%
Wickenburg Police Department	39	0.11%
Salt River Police	20	0.06%
Postal Inspector	8	0.02%
Court	8	0.02%
Paradise Valley Police Department	7	0.02%
Gila Bend Police Department	6	0.02%
Parents or legal guardian	2	0.01%
Fort McDowell Yavapai Nation	2	0.01%
Federal Agency	1	0.00%
Other - Non Law Enforcement	1	0.00%
<b>Total</b>	<b>34,103</b>	<b>100%</b>



## REFERRAL SOURCE

### SOURCE OF COMPLAINTS AND TYPE OF OFFENSE

	Violent	Felony Prop.	Obstr	Fight	Drugs	Peace	Misd. Prop.	Status	Admin	Total
AIM (Attendance is Mandatory Prog.)	0	0	0	0	0	0	0	569	0	569
Avondale Police Department	20	66	7	78	56	161	114	24	1	527
Buckeye Police Department	8	13		14	9	82	11	35	2	174
Chandler Police Department	70	220	15	146	160	526	294	552	2	1,985
Court	0	0	0	0	0	0	0	0	8	8
Department of Public Safety	6	11	5	3	22	483	3	31	3	567
El Mirage Police Department	26	49	3	42	32	53	18	5		228
Federal Agency	0	0	0	0	1	0	0	0	0	1
Fort McDowell Yavapai Nation	0	0	0	0	0	2	0	0	0	2
Gila Bend Police Department	0	0	0	0	0	2	0	4	0	6
Gilbert Police Department	49	80	7	135	163	264	163	166	3	1,030
Glendale Police Department	136	359	29	273	223	695	479	166	2	2,362
Goodyear Police Department	3	42	4	27	35	122	45	35		313
Maricopa County Sheriff	52	113	17	90	115	1,025	101	110	6	1,629
Mesa Police Department	157	392	12	325	534	1,288	855	218	16	3,797
Other Arizona County	0	1	0	1	1	8	12	3	64	90
Other Law Enforcement	0	13	0	3	20	51	13	8	117	225
Other source: Non Law Enforcement	0	0	0	0	0	1	0	0	0	1
Paradise Valley Police Department	1	1		3	1	1	0	0	0	7
Parents or Legal Guardian	0	0	0	0	0	0	0	2	0	2
Peoria Police Department	29	120	2	68	102	269	121	45		756
Phoenix Police Department	585	1,480	76	836	760	2,071	2,013	749	25	8,595
Postal Inspector	0	7	0	0	0	0	1	0	0	8
Probation Officer	0	0	2,872	0	0	1	0	5	0	2,878
Salt River Police	0	2	0	2	2	10	4	0	0	20
School	0	1	0	0	0	52	0	3,354	0	3,407
Scottsdale Police Department	28	115	6	119	148	742	174	159	4	1,495
State Department of Corrections	44	6	0	2	0	12	0	0	0	64
Surprise Police Department	17	25	7	41	66	172	86	134	0	548
Surveillance Officer	0	5	60	0	0	0	0	0	0	65
Tempe Police Department	90	226	6	188	259	498	553	549	2	2,371
Tolleson Police Department	10	22	0	14	46	65	11	71	0	239
Wickenburg Police Department	1	4	0	7	10	11	2	4	0	39
Youngtown Police Department	1	1	0	4	5	41	3	40	0	95
<b>Total</b>	<b>1,333</b>	<b>3,374</b>	<b>3,128</b>	<b>2,421</b>	<b>2,770</b>	<b>8,708</b>	<b>5,076</b>	<b>7,038</b>	<b>255</b>	<b>34,103</b>

## REFERRAL SOURCE

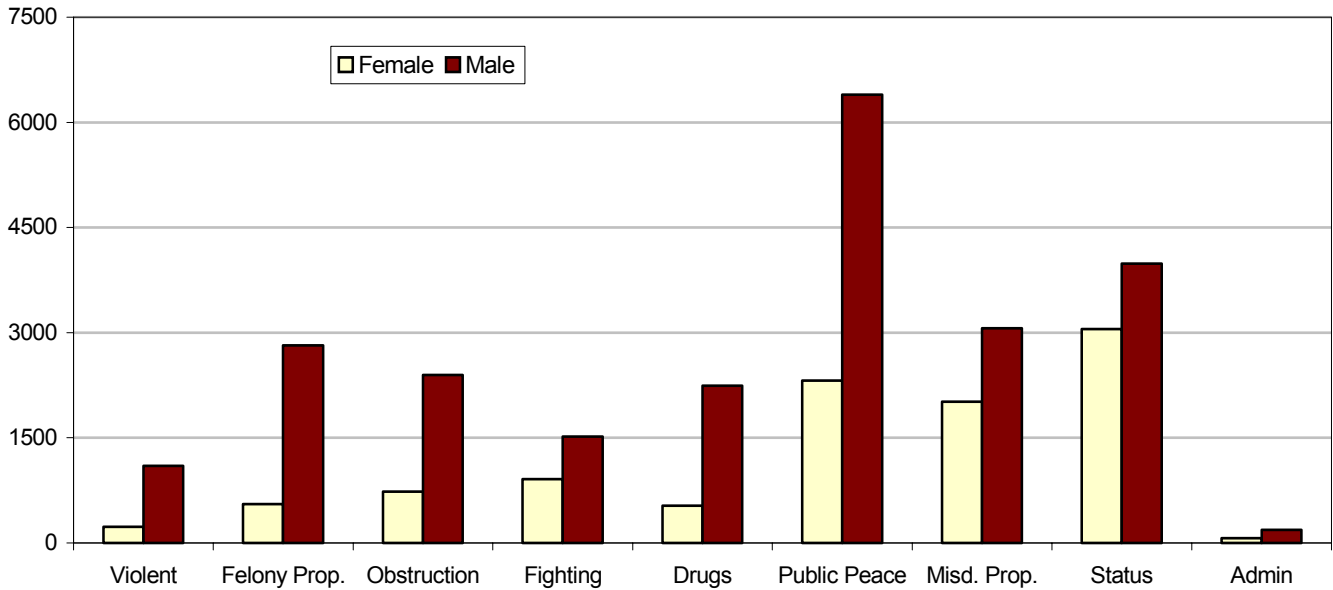
### MOST FREQUENT COMPLAINT SOURCES – ANNUAL CHANGES

Total complaints have declined 5% over the last 5 years. The source of complaints has changed as well. Complaints from the Phoenix Police Department have dropped 22% from 11,094 in 2000 to 8,595 in 2004 (although the proportion of overall complaints only changed slightly). Other agencies have also seen a decline in complaints from 2000 to 2004, while representing a greater proportion of all 2004 complaints.

	2000	2001	2002	2003	2004
Phoenix	11,094	10,173	9,341	9,405	8,595
	28.04%	27.70%	26.80%	27.30%	25.20%
Mesa	3,842	3,851	3,786	3,842	3,797
	9.71%	10.48%	11.24%	11.16%	9.99%
School	4,250	4,002	3,530	3,314	3,407
	10.74%	10.90%	10.50%	9.63%	11.13%
Probation Officer	3,287	3,426	3,505	3,237	2,878
	9.81%	9.32%	10.41%	9.40%	8.44%
Tempe	2,166	2,129	2,014	2,538	2,371
	5.00%	5.80%	5.98%	7.37%	6.93%
Glendale	2,484	2,791	2,429	2,018	2,362
	6.78%	7.60%	7.21%	5.86%	6.95%
Chandler	2,002	1,939	2,277	1,958	1,985
	5.06%	5.28%	6.76%	5.69%	5.82%
Maricopa County Sheriff	1,596	1,608	1,453	1,539	1,629
	4.03%	4.38%	4.31%	4.47%	4.78%
Scottsdale	1,025	1,267	1,439	1,405	1,495
	2.59%	3.45%	4.27%	4.08%	4.38%
Gilbert	683	887	980	962	1,030
	1.73%	2.41%	2.91%	2.79%	2.22%
Peoria	786	1,043	846	758	756
	1.99%	2.84%	2.51%	2.20%	3.02%
Attendance is Mandatory (AIM)	12	623	684	563	569
	0.03%	1.69%	1.86%	1.64%	1.67%
Other Sources	2,798	3,610	2,574	2,891	3,229
	7.07%	9.83%	7.64%	8.40%	9.47%
<b>Total</b>	<b>36,025</b>	<b>36,726</b>	<b>34,858</b>	<b>34,430</b>	<b>34,103</b>

## CHARACTERISTICS OF JUVENILES REFERRED GENDER

In 2004, the number of complaints received that involved girls was 10,401 or 30.5%. Girls are most likely to be involved in status offenses, petty theft, or public peace offenses. Boys are most likely to be involved in public peace offenses, status offenses, or felony theft.



	Violent	Felony Prop.	Obstruction	Fighting	Drugs	Peace	Misd. Prop.	Status	Admin	Totals
Female	231	556	731	907	529	2,313	2,013	3,054	67	<b>10,401</b>
Male	1,102	2,818	2,397	1,514	2,241	6,395	3,063	3,984	188	<b>23,702</b>
<b>Totals</b>	<b>1,333</b>	<b>3,374</b>	<b>3,128</b>	<b>2,421</b>	<b>2,770</b>	<b>8,708</b>	<b>5,076</b>	<b>7,038</b>	<b>255</b>	<b>34,103</b>

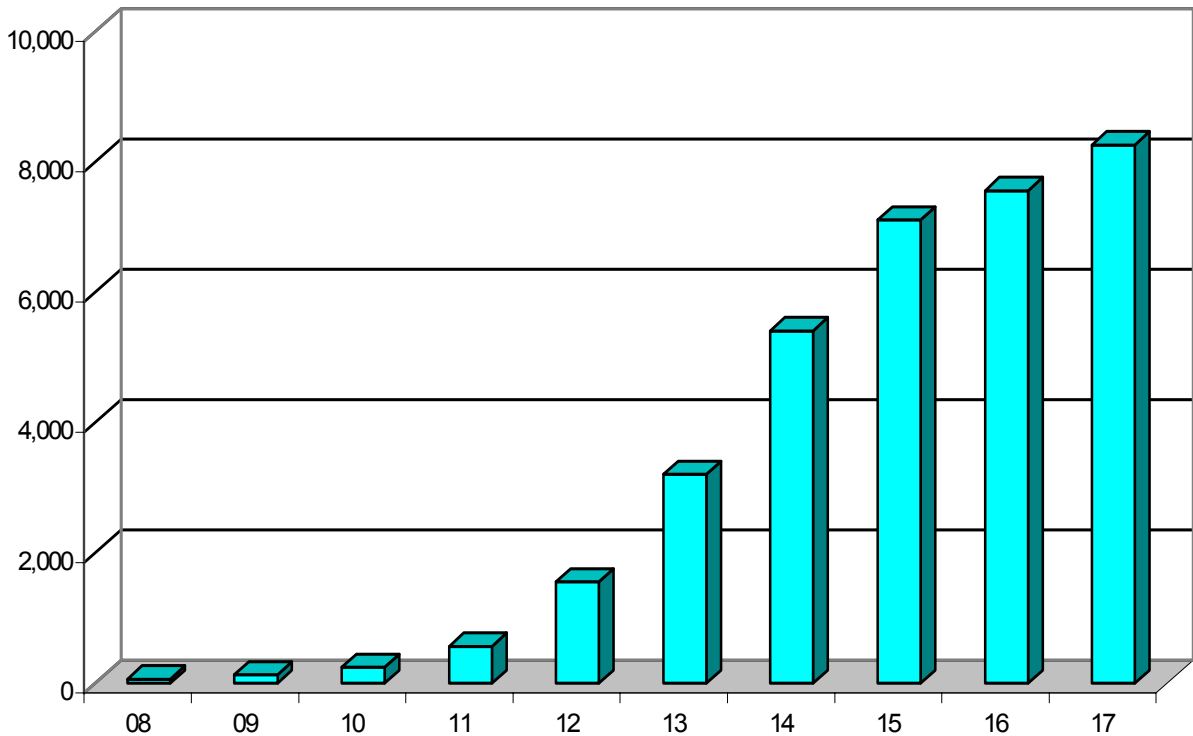
## CHARACTERISTICS OF JUVENILES REFERRED

### AGE AT TIME OF COMPLAINT

Older juveniles are more likely to generate a complaint

- 24.2% of complaints involve 17 year olds
- 67.3% of complaints involve juveniles 15 and older
- Juveniles less than 14 are involved in only 16.9% of Complaints

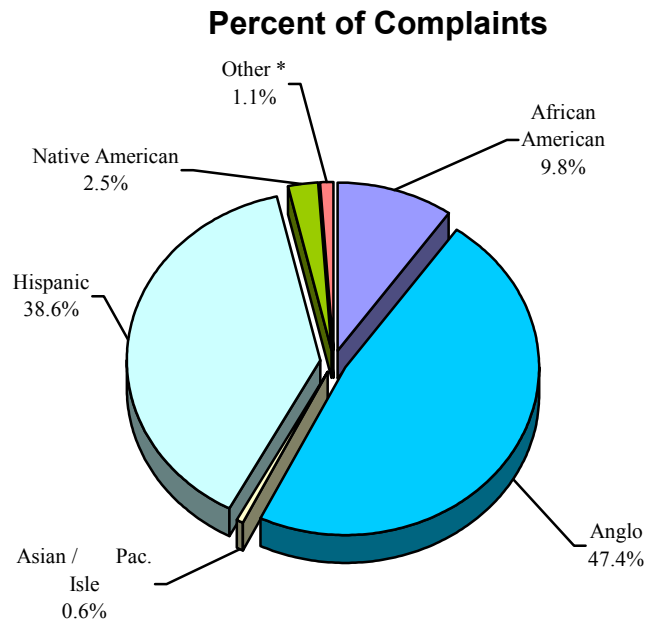
However, juveniles who get their first complaint at a younger age will eventually get more complaints than juveniles who get their first complaint at a later age.



Age at Referral	Violent	Felony Prop.	Obstruction	Fighting	Drugs	Peace	Misd. Prop.	Status	Admin	Totals
08	6	14	0	8		3	5	27	0	63
09	10	22	0	13	2	15	22	46	0	130
10	23	32	1	25	3	24	65	66	1	240
11	45	76	0	80	19	57	129	156	2	564
12	94	131	18	152	82	139	315	616	4	1,551
13	151	331	127	313	205	357	572	1,134	15	3,205
14	186	507	402	454	416	745	892	1,772	35	5,409
15	250	686	772	453	617	1,313	1,045	1,935	44	7,115
16	296	794	915	488	699	2,449	1,103	741	78	7,563
17	272	781	893	435	727	3,606	928	545	76	8,263
<b>Totals</b>	<b>1,333</b>	<b>3,374</b>	<b>3,128</b>	<b>2,421</b>	<b>2,770</b>	<b>8,708</b>	<b>5,076</b>	<b>7,038</b>	<b>255</b>	<b>34,103</b>

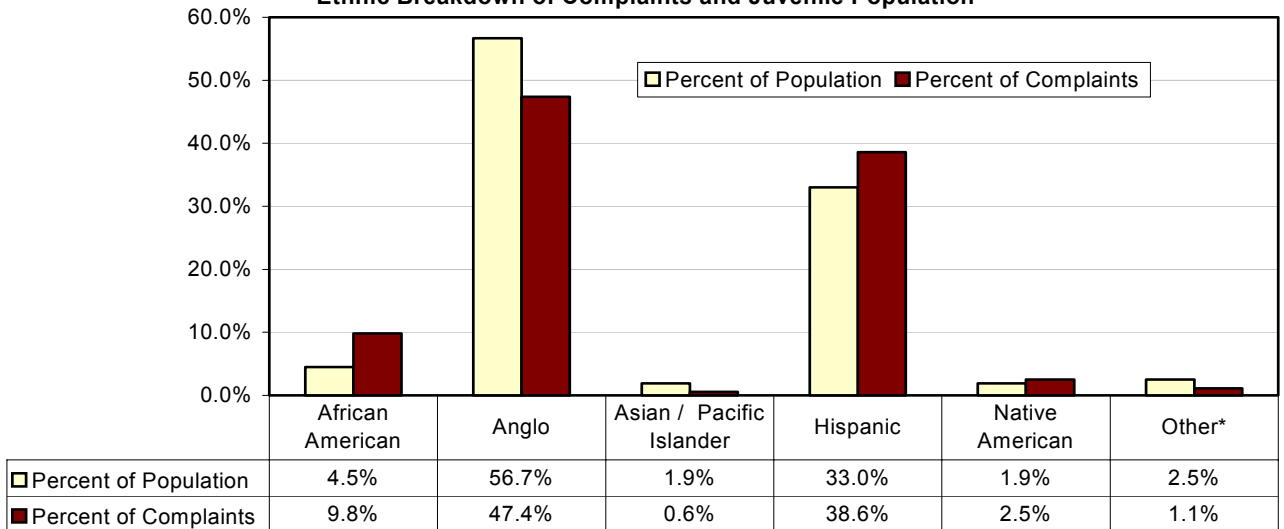
## CHARACTERISTICS OF JUVENILES REFERRED ETHNICITY

The data on this page shows the ethnic breakdown of complaints received in 2004 and compares it with the ethnic distribution of juveniles ages 8 through 17 in Maricopa County. The bar graph shows that Anglo (Caucasian, but not Hispanic) juveniles account for 56.7% of the population but only 47.4% of the complaints. Hispanic juveniles show just the reverse, 33% of the population but 38.6% of the complaints. African Americans have a much higher share of the complaints than their share of the population (9.8% of the complaints compared to only 4.5% of the population). Asians produce the fewest complaints in comparison to their share of the population. This distribution of complaints across ethnic groups has remained relatively constant in recent years.



\* Other includes those with ethnicity listed as unknown.

**Ethnic Breakdown of Complaints and Juvenile Population**

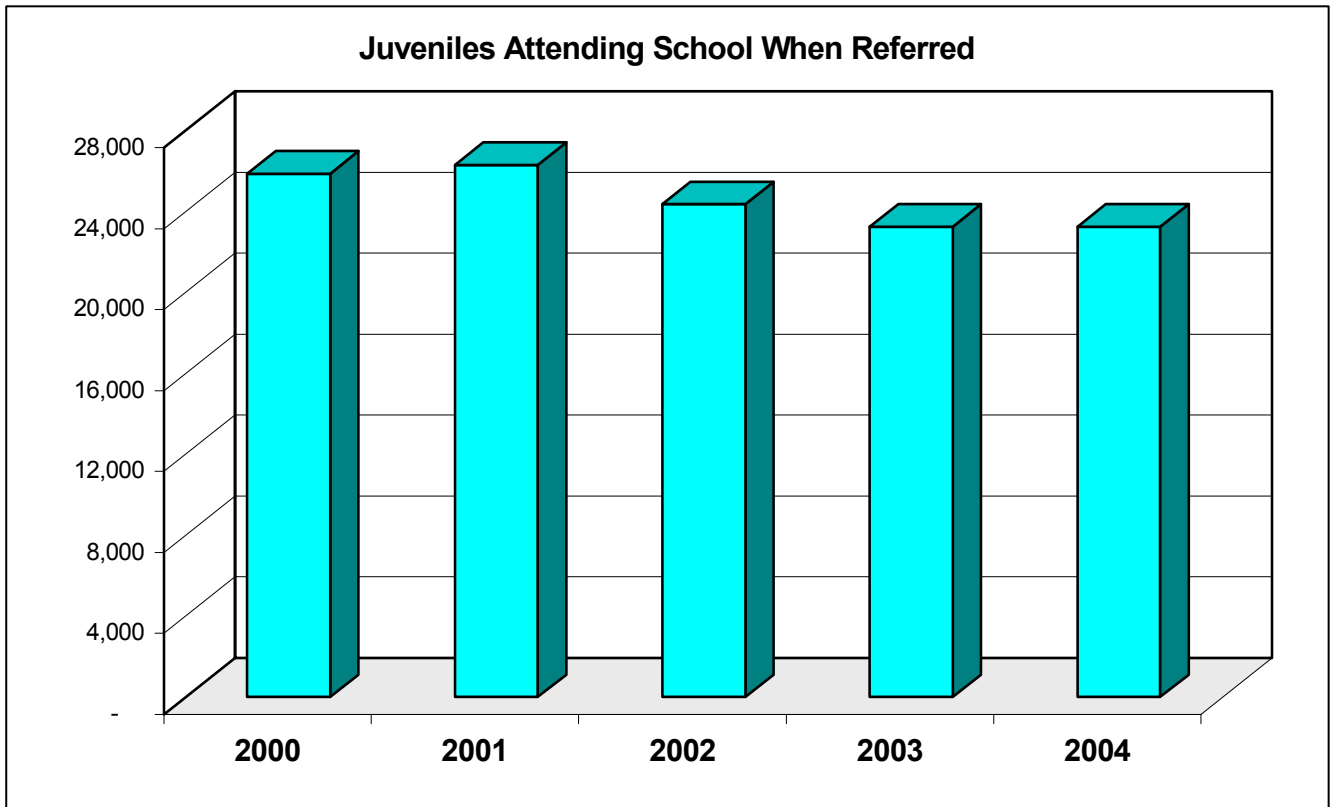


	Violent	Felony Theft	Obstruct	Fight	Drugs	Peace	Petty Theft	Status	Admin	Totals
African American	248	349	382	323	173	541	750	569	18	<b>3,353</b>
Anglo	528	1,379	1,291	1,241	1,436	5,028	2,455	2,647	146	<b>16,151</b>
Asian/ Pacific Isle	7	21	5	11	11	59	41	37	1	<b>193</b>
Hispanic	497	1,531	1,341	755	1,031	2,885	1,670	3,382	74	<b>13,166</b>
Native American	41	79	95	72	100	123	122	205	13	<b>850</b>
Other Origin*	12	15	14	19	19	72	38	198	3	<b>390</b>
<b>Totals</b>	<b>1,333</b>	<b>3,374</b>	<b>3,128</b>	<b>2,421</b>	<b>2,770</b>	<b>8,708</b>	<b>5,076</b>	<b>7,038</b>	<b>255</b>	<b>34,103</b>

\* Other includes those with ethnicity listed as unknown.

## CHARACTERISTICS OF JUVENILES REFERRED

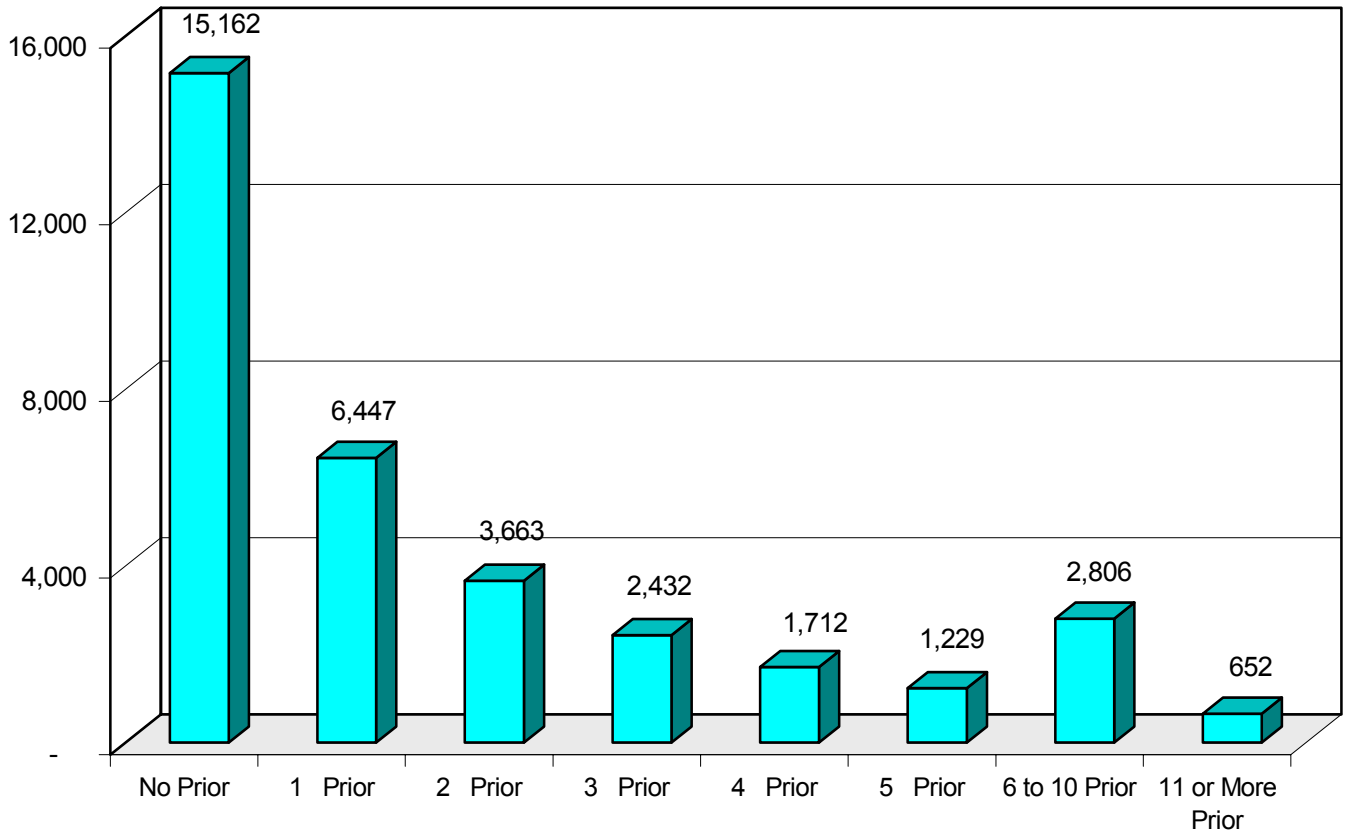
### SCHOOL STATUS



	2000	2001	2002	2003	2004
Juveniles Attending School	25,885	26,315	24,372	23,275	23,272
%Juveniles Attending School When Referred	71.8%	71.6%	69.9%	67.6%	68.2%

## CHARACTERISTICS OF JUVENILES REFERRED

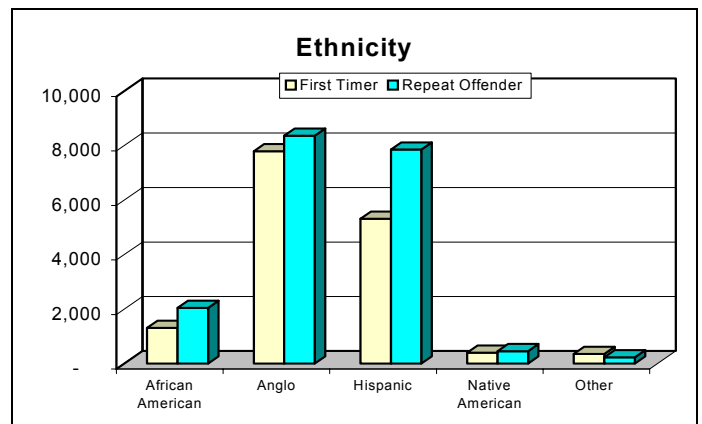
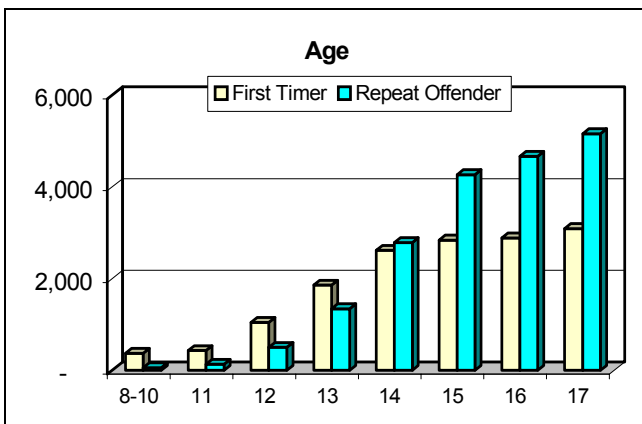
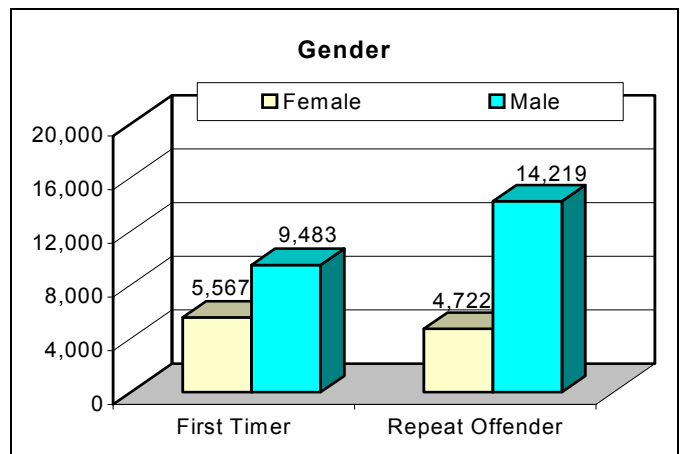
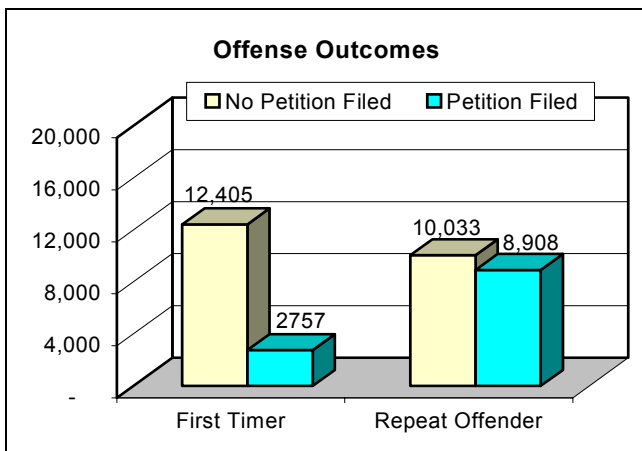
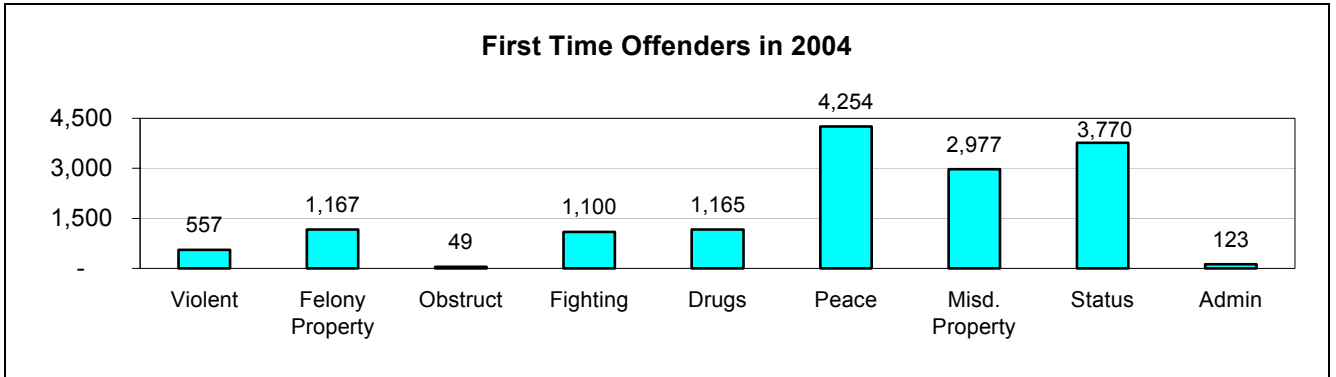
### NUMBER OF PRIOR COMPLAINTS



	Frequency	Percent
No Prior	15,162	44.5%
1 Prior	6,447	18.9%
2 Prior	3,663	10.7%
3 Prior	2,432	7.1%
4 Prior	1,712	5.0%
5 Prior	1,229	3.6%
6-10 Prior	2,806	8.2%
11 or More Prior	652	1.9%
<b>Total</b>	<b>34,103</b>	<b>100%</b>

## FIRST TIME OFFENDERS

	2000	2001	2002	2003	2004
First Time Offender	15,061	15,982	15,005	14,852	15,162
	40.0%	43.5%	43.0%	43.1%	44.5%
Repeat Offender	20,921	20,744	19,853	19,578	18,941
	60.0%	56.5%	56.9%	56.7%	80.0%
Total	35,982	36,726	34,858	34,430	34,103



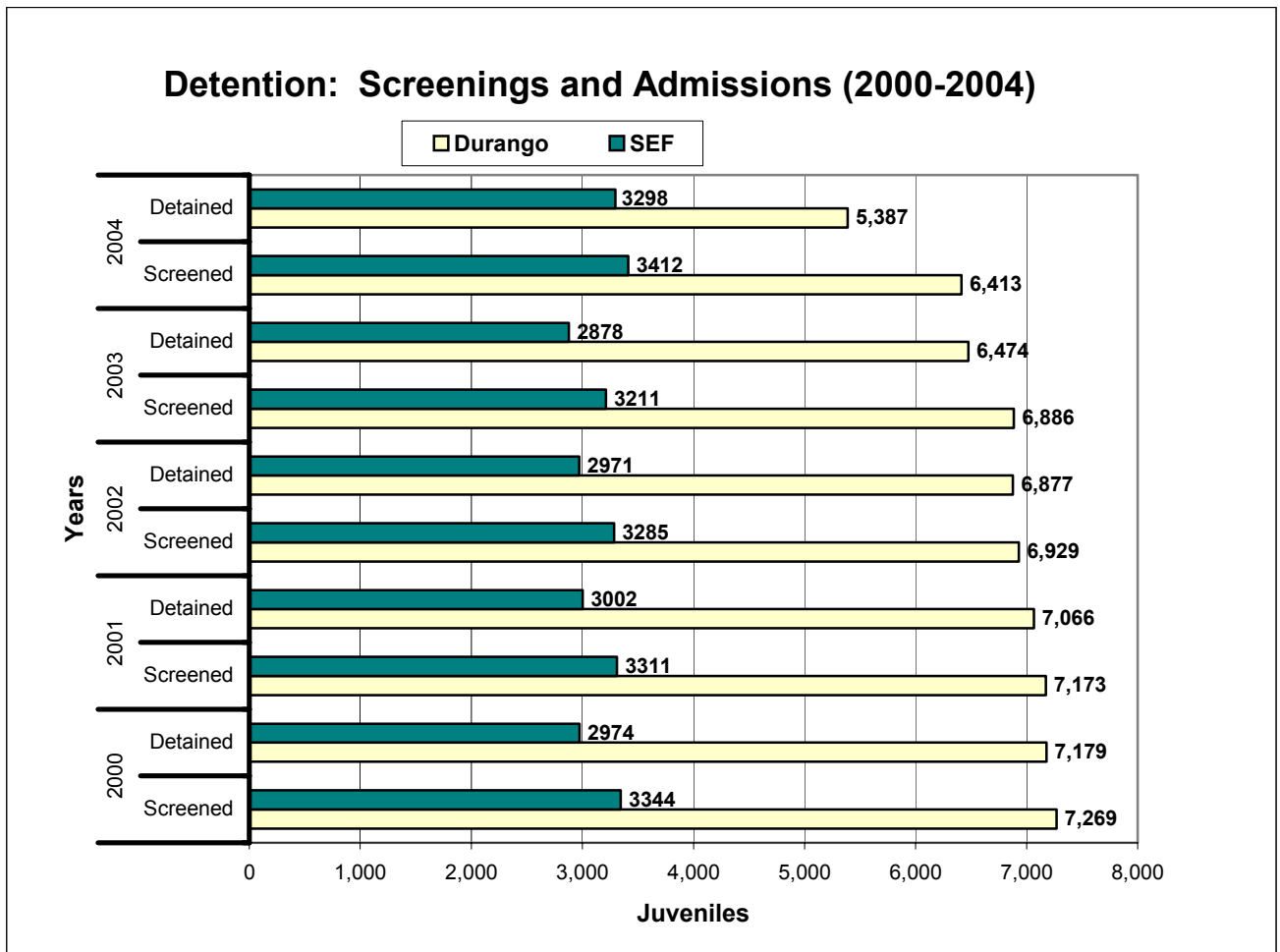


## DETENTION

### JUVENILES BROUGHT TO DETENTION SCREENING AND JUVENILES DETAINED

In 2004, there were 9,711 requests for juveniles to be detained, which resulted in 8,799 (90.6%) detainments. Requests generally occur when a police officer believes that a juvenile, apparently involved in illegal activity, needs to be confined to protect the community or the juvenile himself.

A juvenile probation officer, assigned to the Detention Screening Unit decides whether to detain or release the juvenile based on Supreme Court Rules and Juvenile Probation Department administrative criteria. Detention screeners are on duty 24 hours a day, every day of the year, at both detention facilities.



Of the 8,799 detainments 2,979 were for delinquent or incorrigible acts. The remaining 5,819 were detained on warrants, court holds, holds for other jurisdictions or agencies, or as a term of probation.

The average daily population in detention for 2004 was 445, an 11% increase since 2000. In December 1999, detention capacity was increased by almost 40% with the addition of 80 beds at Durango.

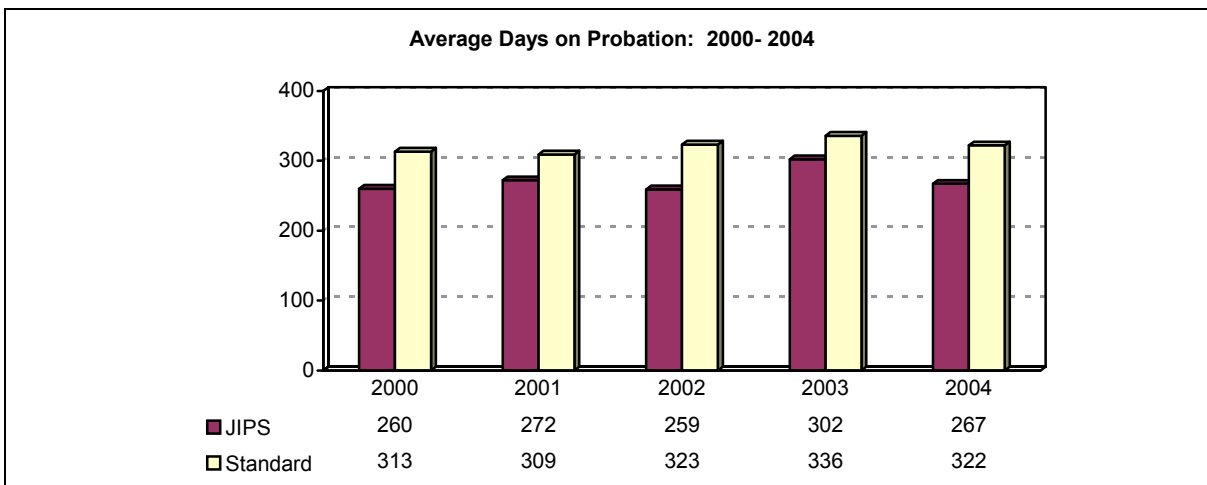
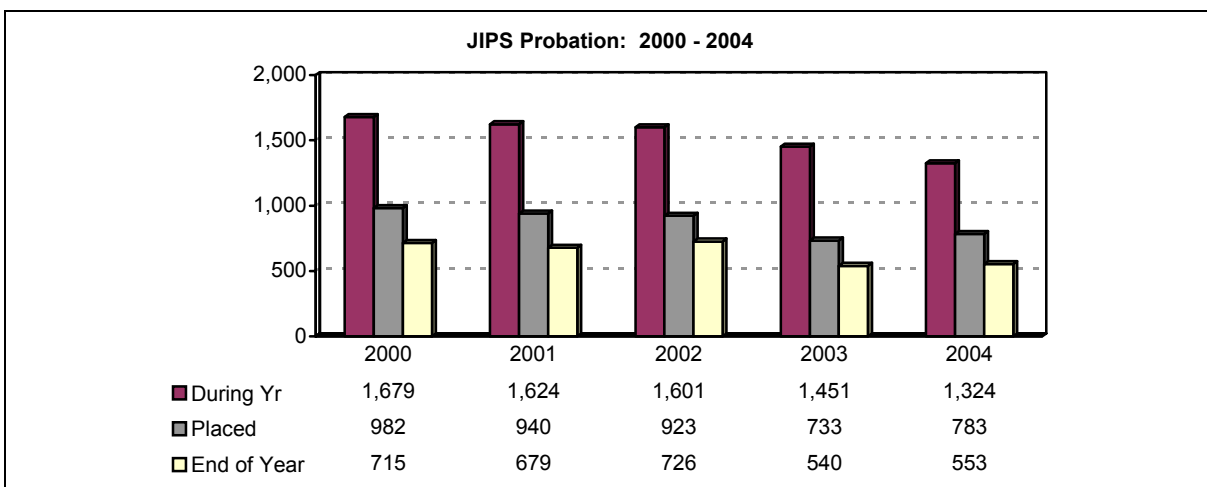
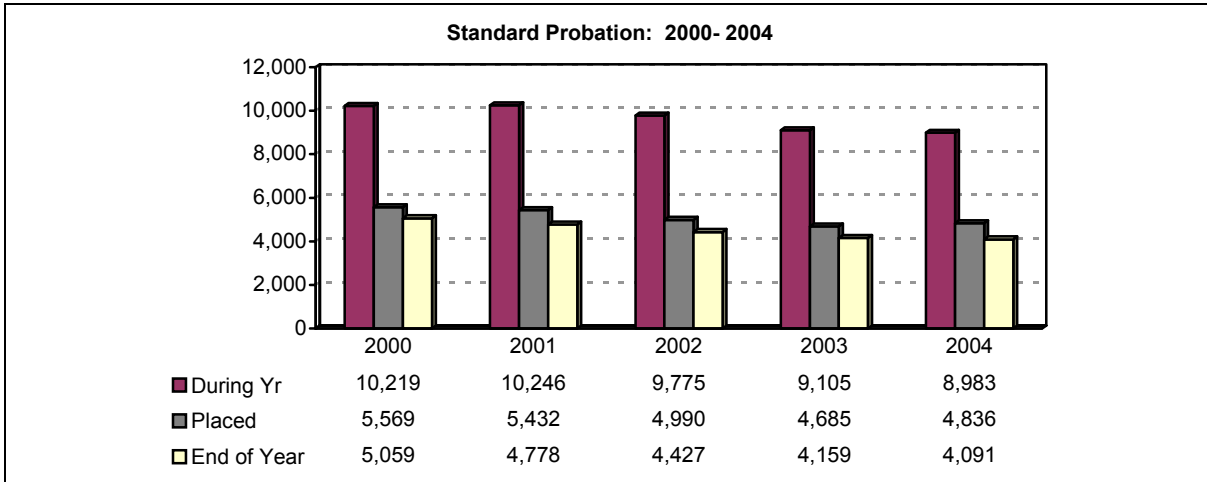
The average length of stay in 2004 was 18.2 days, about four days longer than in 2000. Approximately 50% of juveniles are released from detention in two days or less, either charges cannot be filed against them, or a judge has released them on reviewing their situation more thoroughly.

Detention is regularly over capacity. In 2000, the average daily population was 12% over capacity, in 2004 that increased to 18%.

# PROBATION

## PROBATION STATISTICS 2000 – 2004

The number of juveniles on Probation has been decreasing in recent years. Since 2000, the number on standard probation has dropped by 12%, and the number on JIPS by 21%.

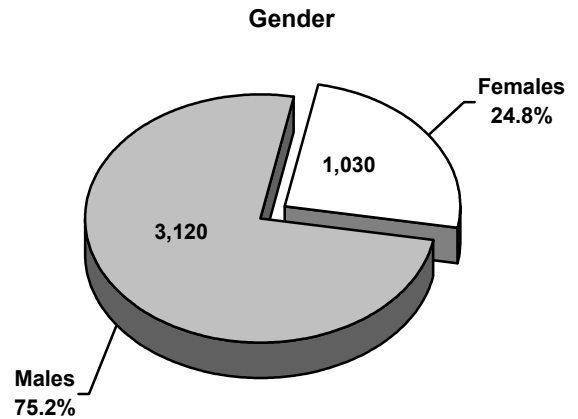
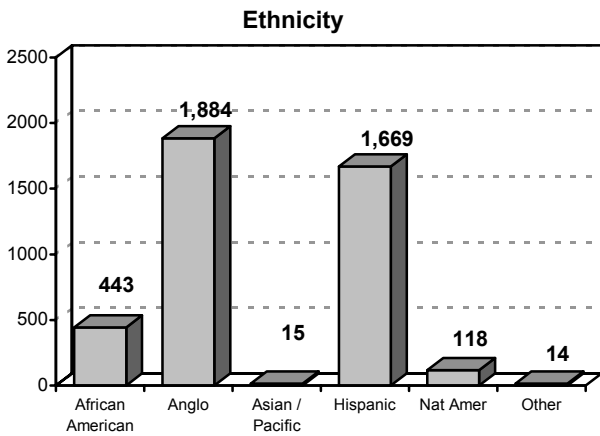
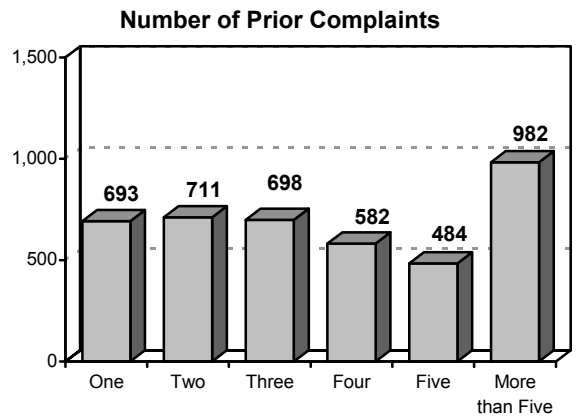
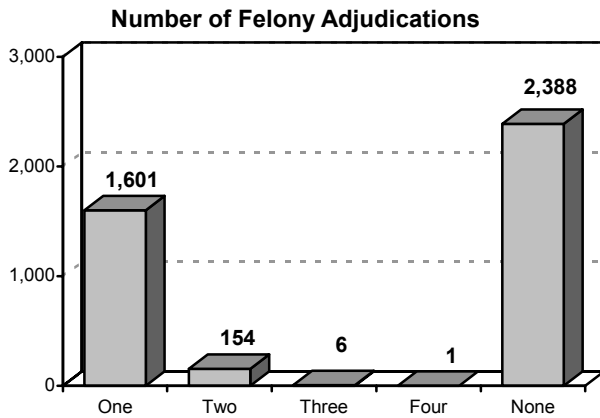


# PROBATION

## A DAY ON STANDARD PROBATION 12-01-2004

4,150 Juveniles were on Standard Probation

Most Severe Adjudicated Felony	Violent	Felony Property	Obstruction of Justice	Drugs	Peace	Adjudicated on a Misdemeanor	Total
Total Juveniles	303	984	47	194	234	2,388	4,150
Percentage	7.3%	23.7%	1.1%	4.7%	5.6%	57.5%	100%



Age		
12 & Under	53	1.3%
13 Years	199	4.8%
14 Years	441	10.6%
15 Years	816	19.7%
16 Years	1,200	28.9%
17 Years	1,441	34.7%
<b>TOTAL</b>	<b>4,150</b>	<b>100.0%</b>

Months on Probation		
0-6 Months	2,182	52.6%
7-12 Months	978	23.6%
13-18 Months	435	10.5%
19-24 Months	239	5.8%
25 + Months	316	7.6%
<b>TOTAL</b>	<b>4,150</b>	<b>100.0%</b>

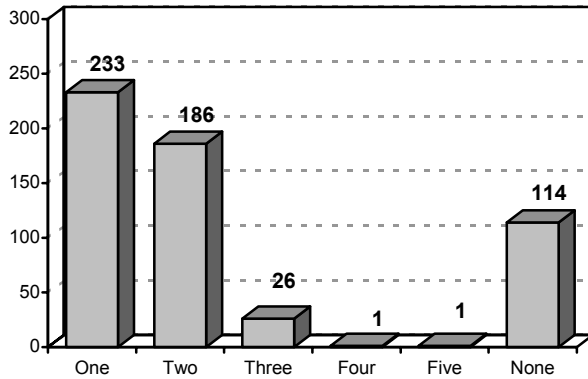
# PROBATION

## A DAY ON JUVENILE INTENSIVE PROBATION (JIPS) 12-01-2004

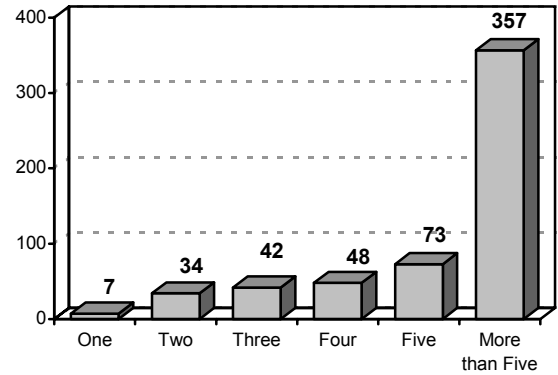
561 Juveniles were on JIPS Probation

Most Severe Adjudicated Felony	Violent	Felony Property	Obstruction Of Justice	Drugs	Public Peace	Adjudicated on a Misdemeanor	Total
Total Juveniles	51	295	22	38	41	114	561
Percentage	9.1%	52.6%	3.9%	6.8%	7.3%	20.3%	100%

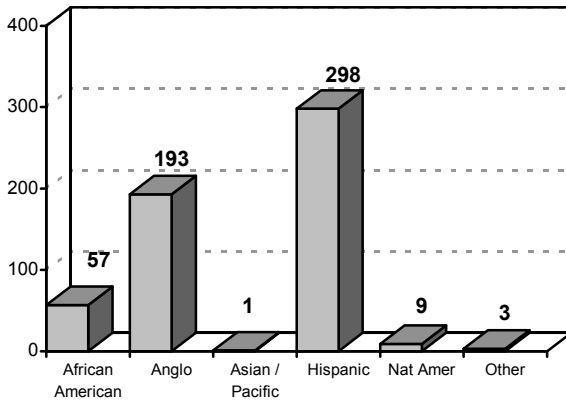
**Number of Felony Adjudications**



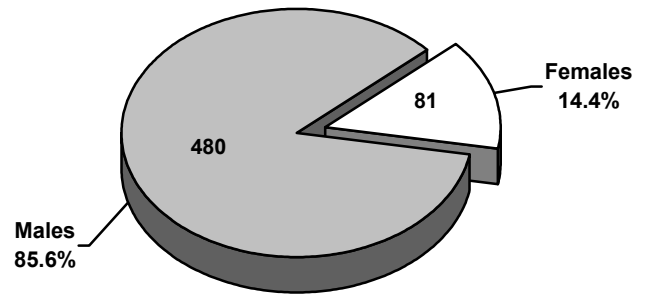
**Number of Prior Complaints**



**Ethnicity**



**Gender**



Age		
12 & Under	0	0%
13 Years	14	2.5%
14 Years	69	12.3%
15 Years	118	21.0%
16 Years	173	30.8%
17 Years	187	33.3%
<b>TOTAL</b>	<b>561</b>	<b>100%</b>

Months on Probation		
0-6 Months	377	67.2%
7-12 Months	116	20.7%
13-18 Months	36	6.4%
19-24 Months	17	3.0%
25+ Months	15	2.7%
<b>TOTAL</b>	<b>561</b>	<b>100%</b>

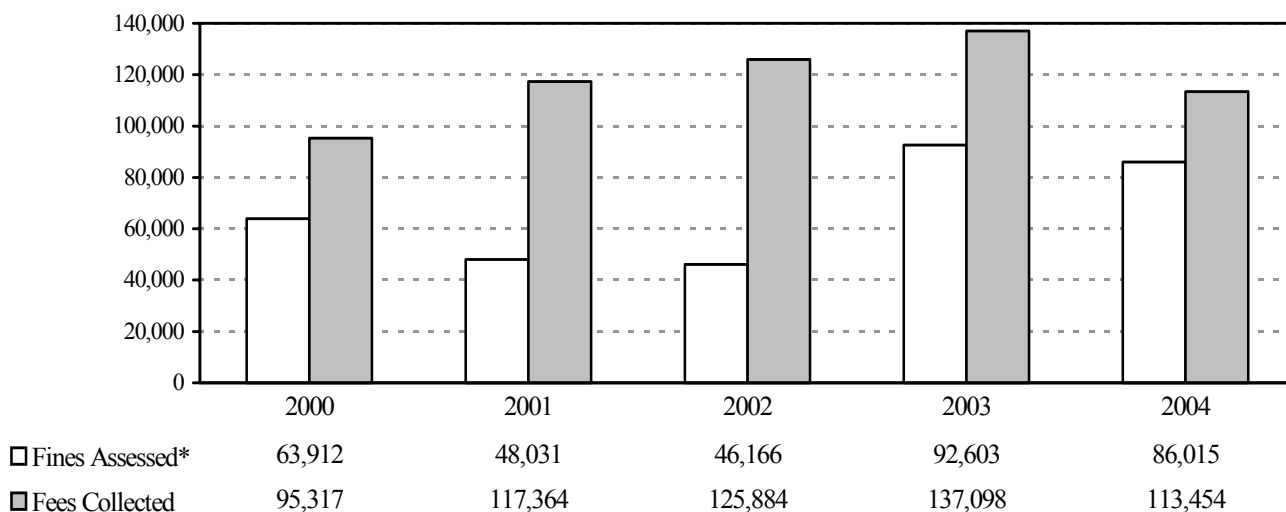
## ACCOUNTABILITY

When juveniles are referred for violations of the law, the Juvenile Court is required to hold them accountable for their actions. Some options available are requiring them to pay restitution to a victim, perform community service work, pay a fine or attend an education program that addresses a particular problem.

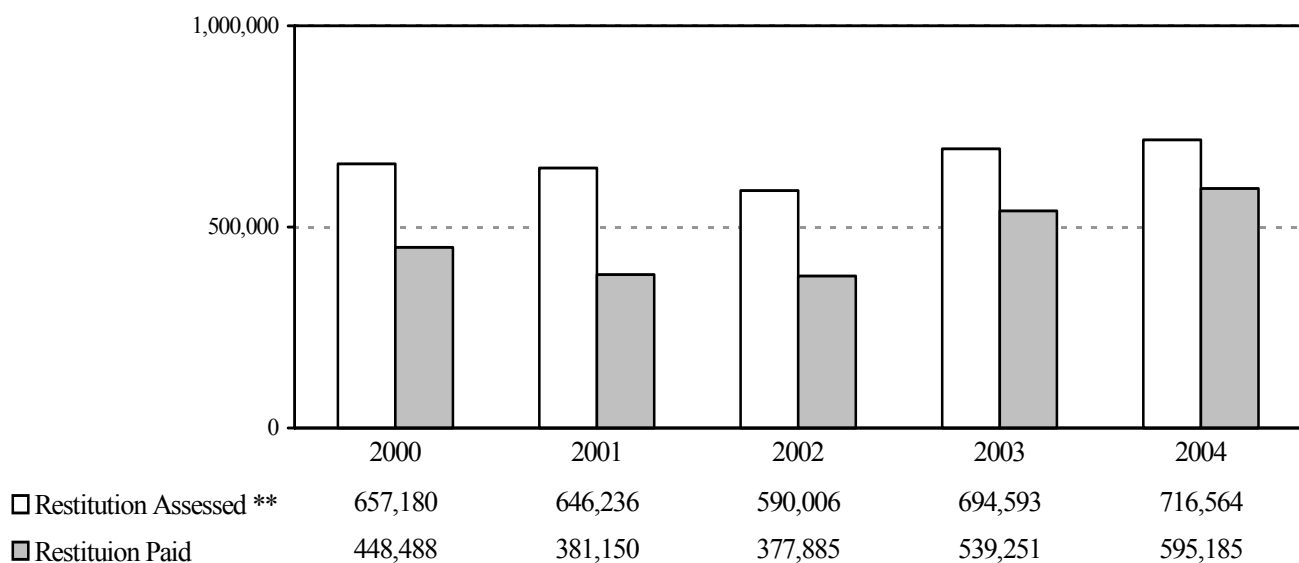
If juveniles do not comply with the sanctions imposed, they are subject to further action, such as a violation of probation, or filing of a petition which could result in being placed on probation.

The charts on this and the next page show how juveniles have been held accountable, and how they have complied with orders to work in the community, attend educational programs, pay fines or pay restitution.

### COURT ORDERED MONETARY PENALTY 2000 – 2004



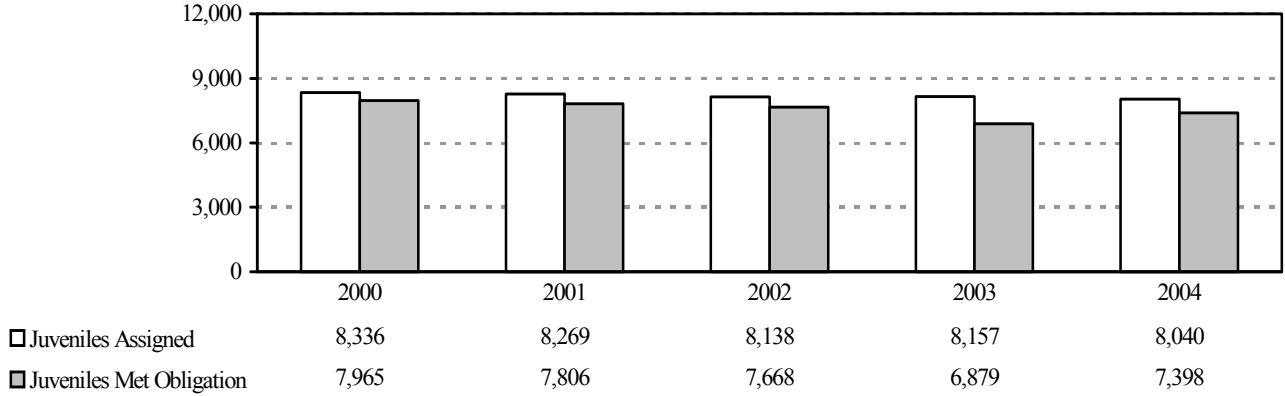
### RESTITUTION 2000 - 2004



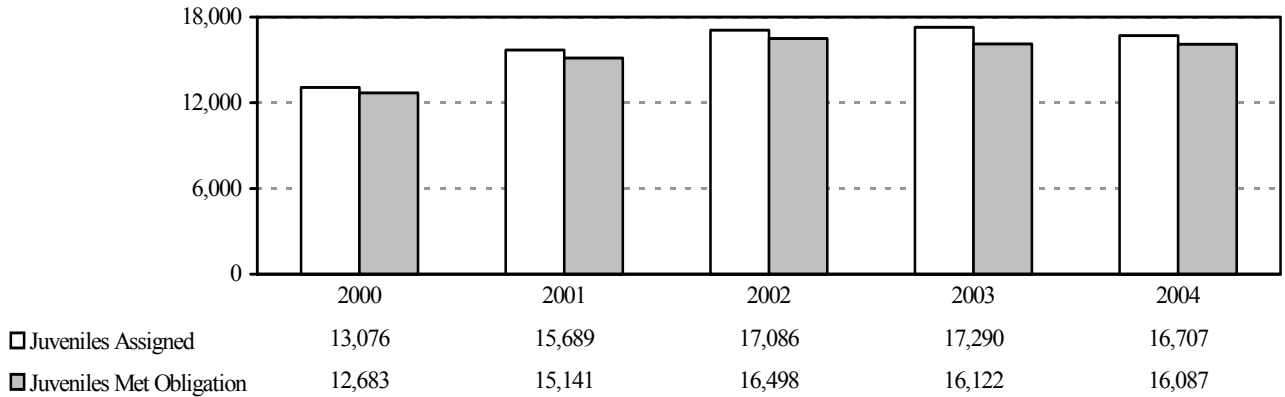
\* Fines Assessed amount is the amount to be paid in the specified year and includes Citation, Diversion and Court Ordered fines.

\*\* Restitution Assessed amount is the amount to be paid in the specified year.

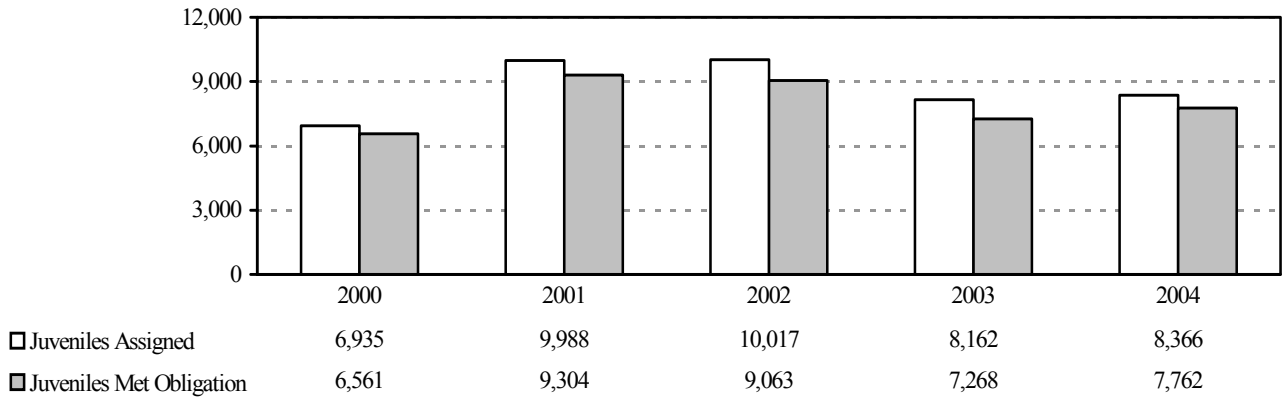
## ACCOUNTABILITY WORK HOURS 2000-2004



## EDUCATIONAL COUNSELING PROGRAMS 2000 - 2004



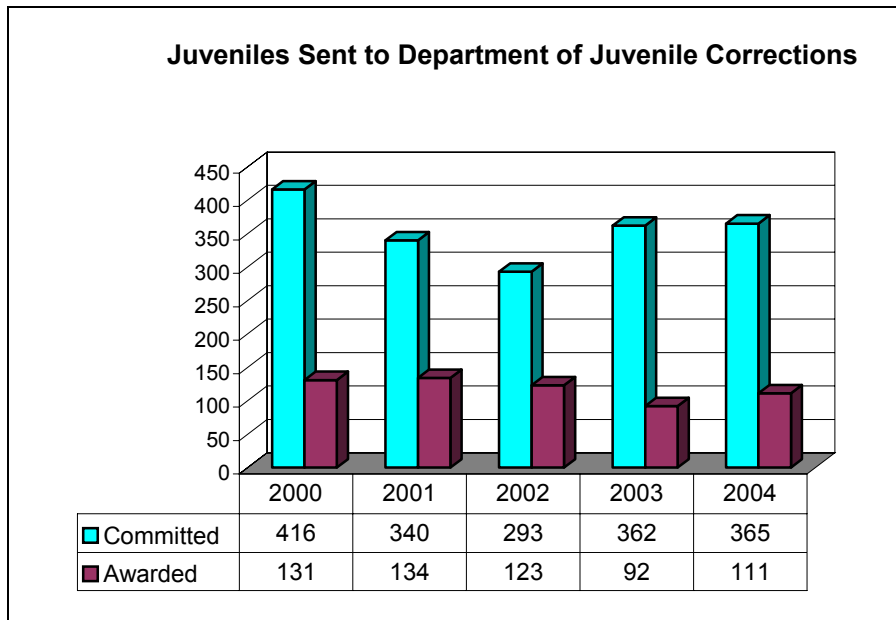
## OTHER CONSEQUENCES 2000 - 2004



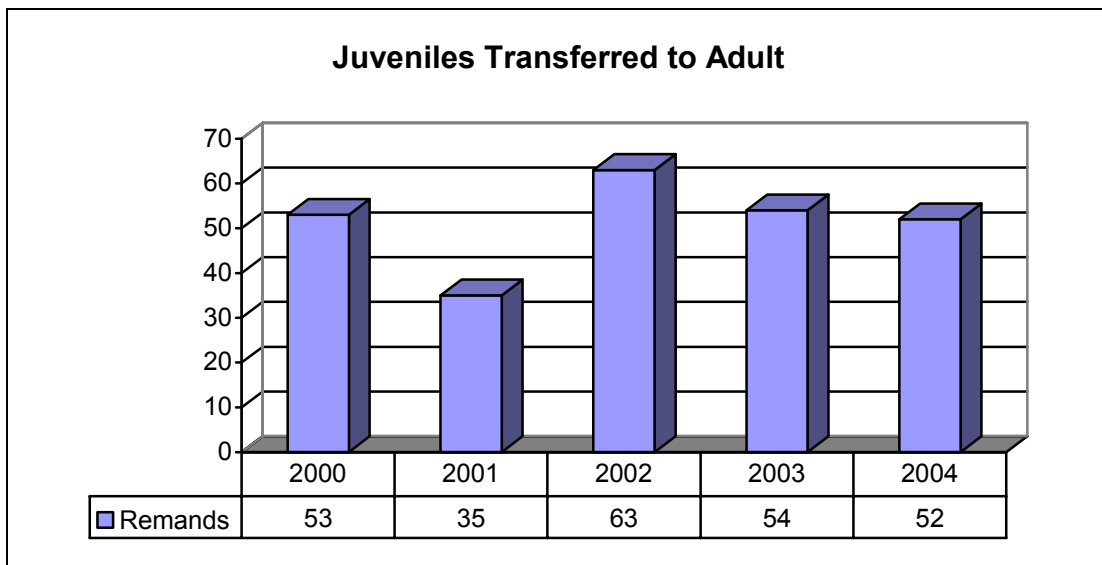
## TRENDS: COMMITMENTS AND ADULT PROSECUTIONS

Juveniles, who are committed to the Department of Juvenile Corrections (ADJC) or prosecuted as adults, present the most serious challenges to the juvenile justice system. These are juveniles whom judges and probation officers consider the highest risk to the community. When a juvenile is committed or prosecuted as an adult, the Juvenile Court relinquishes supervision of that juvenile. The tables on this page show how many of these cases there have been over the past 5 years.

Commitments to ADJC have increased in recent years, although they are still below the year 2000 level. Awards are cases in which a juvenile previously committed is adjudicated for a new offense and returned to the ADJC. The 111 juveniles awarded in 2004 were only 43% of the 1997 figure of 256.

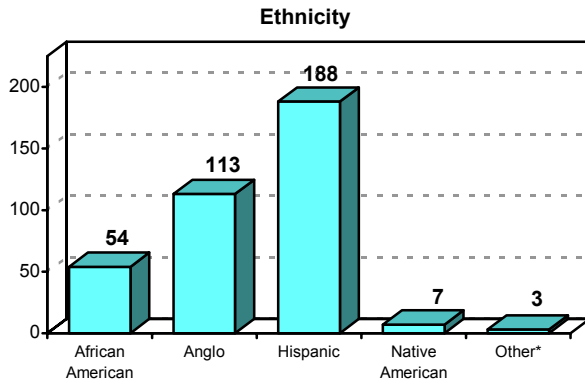


The number of juveniles transferred to adult has changed. In 1997, new legislation mandated that some juveniles be prosecuted as adults (based on their age, offense history, and presenting offense). This resulted in an all-time high of 616 adult prosecutions in 1998 (81 remands and 535 direct files). Since then, the number of adult prosecutions has dropped each year.

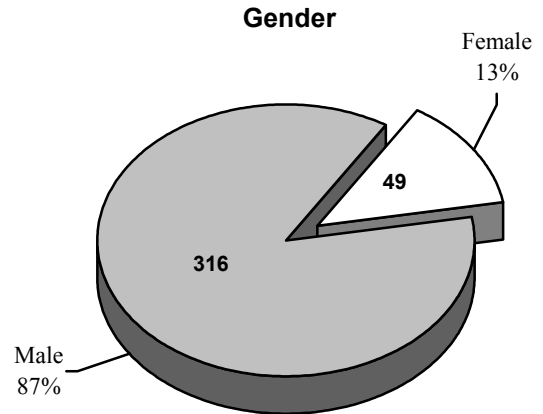


## COMMITMENT PROFILE 2004

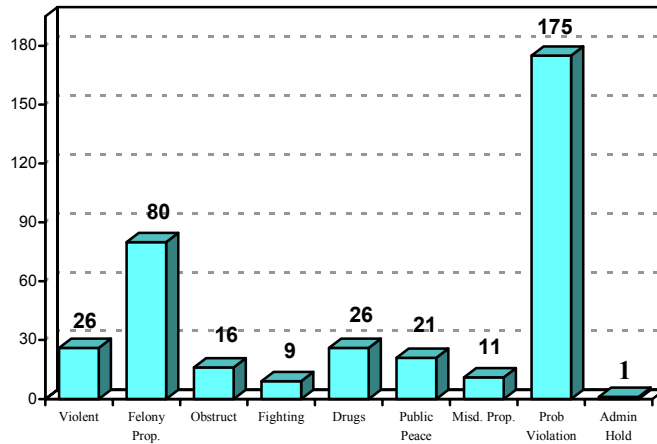
In 2004, the number of juveniles that were committed to the Department of Juvenile Corrections was 365. Of those juveniles, 316 (87%) had one felony adjudication when committed, the remainder had none. In addition, nearly half were committed on a violation of probation.



\* Other includes those where ethnicity was listed as unknown.



### Most Severe Commitment Offense



Age at Time of Commitment to ADJC		
13 Years	5	1.4%
14 Years	30	8.2%
15 Years	78	21.4%
16 Years	133	36.4%
17 Years	119	32.6%
<b>TOTAL</b>	<b>365</b>	<b>100%</b>

Number of Felony Adjudications when Committed			
1 Felony	316	87%	
2 Felonies	0	0%	
3 Felonies	0	0%	
4-5 Felonies	0	0%	
None	49	13%	
<b>TOTAL</b>	<b>365</b>	<b>100%</b>	



## JUVENILES PROSECUTED AS ADULTS

Not all juveniles accused of illegal acts are prosecuted in Juvenile Court. Arizona law requires that under certain conditions (based on the offense alleged and the juvenile's age and offense history) the county attorney must file charges against the juvenile in adult criminal court. These are referred to as **Direct Files** and came into law in July 1997. In certain other situations the state may file adult charges.

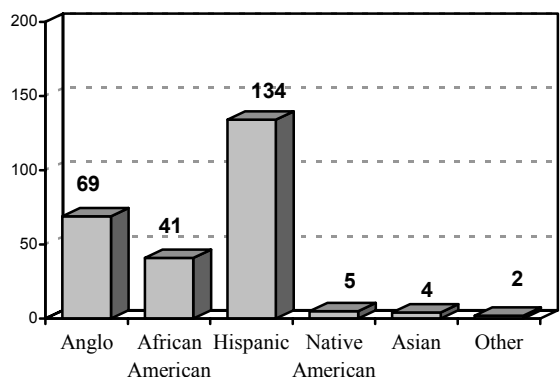
If the juvenile and/or his offense history do not meet the requirements for a Direct File, the state may file a Petition for Transfer, in which the state is asking the Juvenile Court to "**remand**" the juvenile to criminal court for prosecution as an adult.

### DIRECT FILES

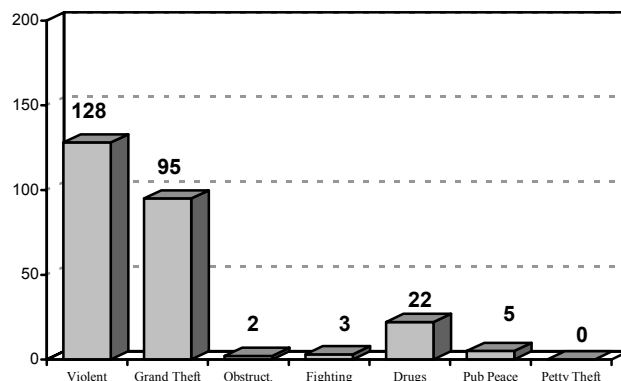
In 2004 the number of juveniles that were charged with offenses that were "Direct Filed" in adult criminal court was 255. The tables and graphs below profile those juveniles.

	Age When Apprehended				Total
	14	15	16	17	
<b>Female</b>	0	0	7	8	15
<b>Male</b>	5	39	78	118	240
<b>Totals</b>	5	39	85	125	255

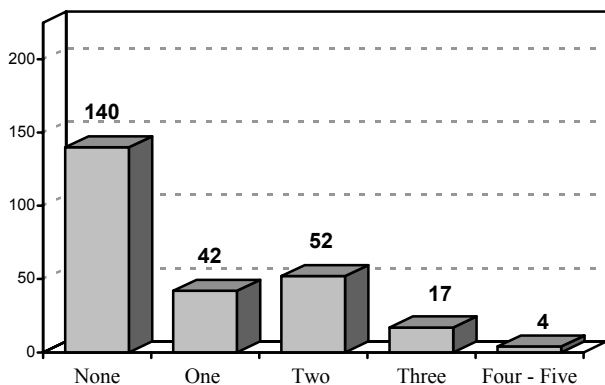
**Ethnicity**



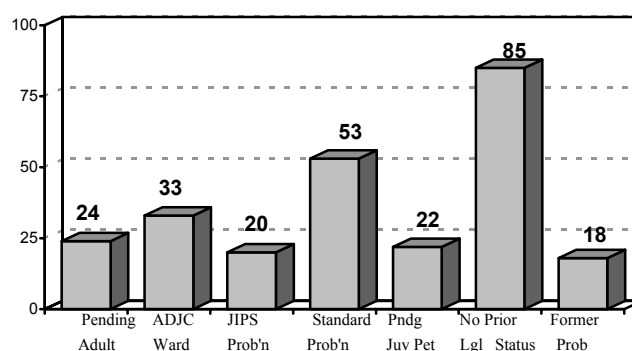
**Most Severe Offense**



**Previous Felony Adjudications**



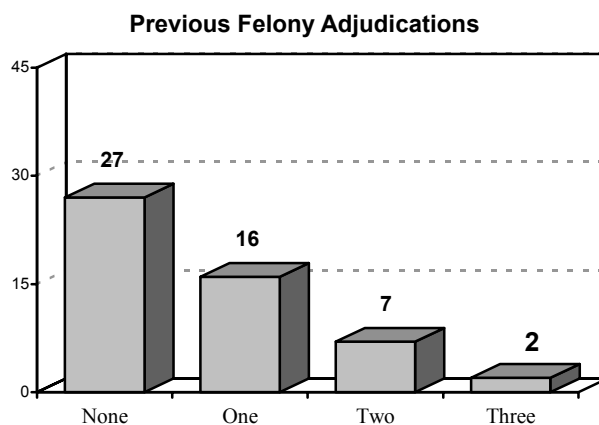
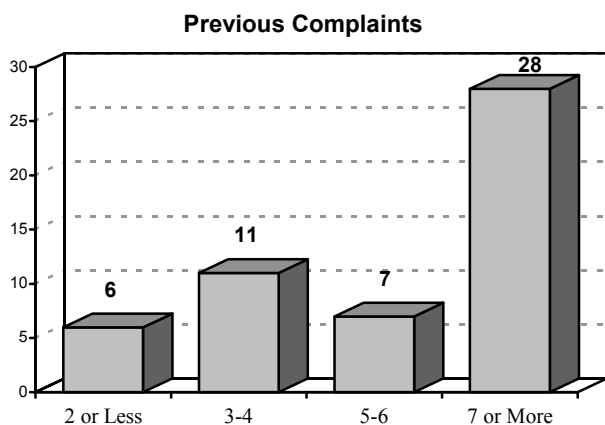
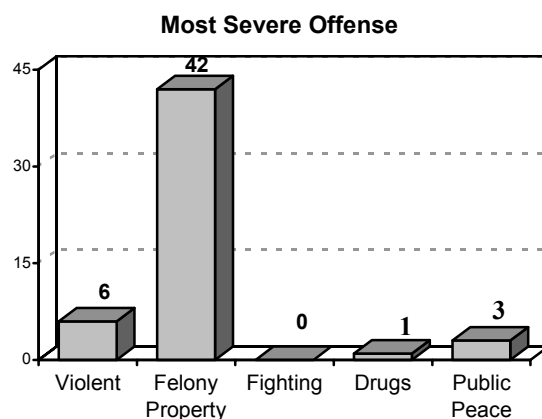
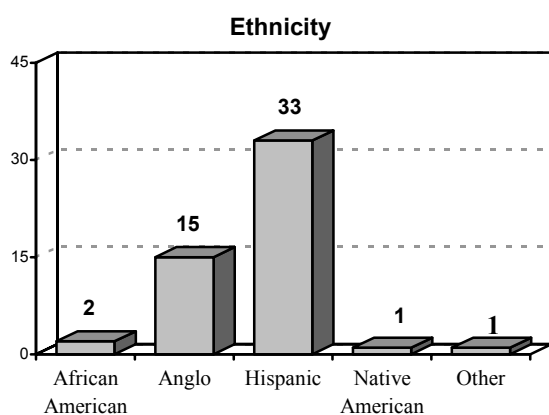
**Legal Status when Apprehended**



## JUVENILES PROSECUTED AS ADULTS REMANDS

Juvenile Court judges ruled on 128 petitions for transfer involving 119 juveniles in 2004. They granted 54 of those petitions resulting in 52 juveniles being remanded for criminal prosecution as adults.

	Age When Remanded			
	15	16	17	Total
<b>Female</b>	0 0.0%	0 0.0%	1 2.1%	1 1.9%
<b>Male</b>	1 100%	4 100%	46 97.9%	51 98.1%
<b>Total</b>	<b>1</b> 100%	<b>4</b> 100%	<b>47</b> 100%	<b>52</b> 100%



## DIVERSION

Most illegal activity by juveniles involves children who are first or second time offenders charged with relatively minor illegal acts. There is a good chance they will never be referred again. For the most part, these are the types of juveniles assigned to diversion programs. In a diversion program a juvenile can satisfy his obligation to the state (and sometimes the victim) without going through a formal court process. To satisfy his obligation a juvenile must:

- Acknowledge responsibility for the illegal act and
- Participate in unpaid community service work and/or an approved counseling, education, rehabilitation, or supervision program;
- Pay restitution to the victim; or
- Pay a monetary assessment.

If the juvenile complies with the requirements, the County Attorney does not file formal charges. If the juvenile does not comply, the case is submitted to the County Attorney for review. This could result in the filing of a petition alleging delinquency or incorrigibility.

The juvenile probation department, several cities, schools and private enterprises administer an array of diversion programs. The County Attorney's office determines which offenses are eligible for diversion; these are generally misdemeanor or status offenses, and sometimes first offender marijuana possession.

Juveniles are assigned to any one of several types of diversion programs, depending on where they live and the type of offense alleged. Here are some of the programs available:

**City Diversion Programs:** Several cities in Maricopa County operate or fund diversion programs. Generally these programs receive the cases of first offenders for truancy, status, or liquor offenses. Phoenix, Mesa, Gilbert, Scottsdale, Peoria, and Glendale have diversion programs.

**CUTS:** The "Court Unified Truancy Suppression" program is a cooperative effort between the Juvenile Probation Department and several schools to work with truant students and their families. The Probation Officer meets the juvenile and family on campus and works directly with school personnel to (1) develop consequences that are completed at the school and (2) assist the family in maintaining good attendance.

**Drug Diversion:** First time offenders apprehended for possession of marijuana are eligible to participate in a drug education and prevention program. If they complete the program the County Attorney does not file a petition as would normally be done with a felony offense.

**Limited Jurisdiction Courts:** Justice Courts in many communities review citations for minor offenses like possession of alcohol or tobacco, traffic violations, or curfew. Juveniles are fined or given consequences just as with other Diversion methodologies.

**JCORPS:** Many juveniles who are required to perform unpaid community service work do it through the Juvenile Community Offender Restitution and Public Service. They clean up graffiti, pick up roadside litter, help build and refurbish homes, and work in food banks. Assigned probation staff locate sites for juveniles to do community work, transport them to the sites, and supervise them while there.

**Teen Court:** Teen Courts use peer relationships to resolve a juvenile's illegal activity. A juvenile assigned to a Teen Court must acknowledge responsibility before a jury of their peers. The jury then decides the requirements for resolving the charges. The jury is trained and supervised by adults familiar with the juvenile justice system. Both the juvenile and parents must agree to participate in Teen Court before the case is assigned.

## DIVERSION CONSEQUENCES

The following table shows the many different kinds of consequences given to juveniles in Diversion. The table on the following page profiles the juveniles assigned diversion consequences.

There is not a one-to-one relationship among juveniles, complaints, and diversion consequences. A juvenile can be given more than one consequence for a single complaint, and occasionally two complaints can be dealt with simultaneously and receive the same consequence(s).

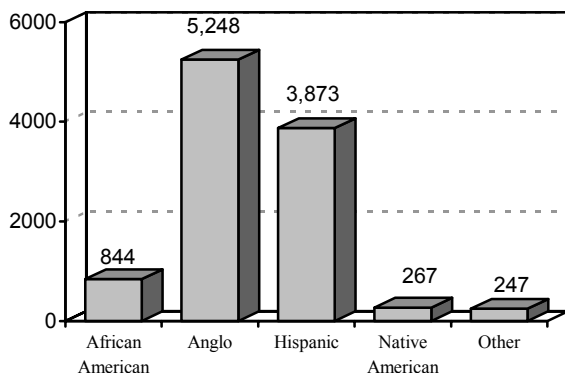
In 2004 a total of 10,499 juveniles were given 17,553 consequences for 11,588 diversion-eligible complaints and citations.

	Consq Completed?		Total
	N	Y	
Alcohol Related Program	51 6.9%	689 93.1%	740 100.0%
Apology Letter	55 11.3%	432 88.7%	487 100.0%
Apply for Employment	6 40.0%	9 60.0%	15 100.0%
Attend School	18 34.0%	35 66.0%	53 100.0%
Book Report	100 17.8%	461 82.2%	561 100.0%
Counseling	412 18.8%	1776 81.2%	2188 100.0%
City Diversion	571 39.1%	888 60.9%	1459 100.0%
CUTS Truancy Program	498 35.6%	900 64.4%	1398 100.0%
Drug Diversion Program	221 16.9%	1087 83.1%	1308 100.0%
Education Program	262 14.2%	1587 85.8%	1849 100.0%
Fire Education Program	6 15.4%	33 84.6%	39 100.0%
Family Violence Program	21 13.7%	132 86.3%	153 100.0%
Consequence Given by a City or Justice Court	2 .3%	779 99.7%	781 100.0%
Life Sentence Program	1 2.3%	43 97.7%	44 100.0%
National Curriculum Training Institute	380 13.9%	2346 86.1%	2726 100.0%
TASC Drug Program	4 8.9%	41 91.1%	45 100.0%
Teen Court	37 7.5%	458 92.5%	495 100.0%
Act as a Tutor	141 39.9%	212 60.1%	353 100.0%
Work Hours	599 21.0%	2253 79.0%	2852 100.0%
Miscellaneous	0 .0%	7 100.0%	7 100.0%
<b>Total</b>	<b>3385 19.3%</b>	<b>14168 80.7%</b>	<b>17553 100.0%</b>

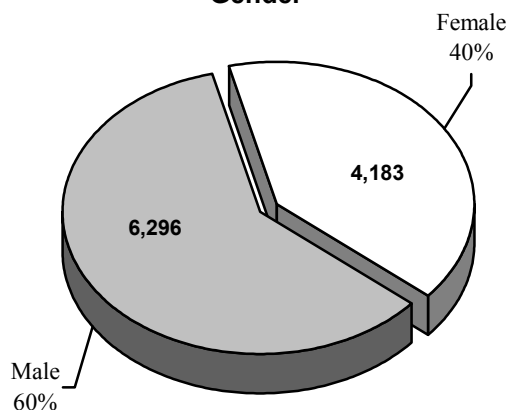
## DIVERSION JUVENILES ASSIGNED TO DIVERSION

These tables profile the 10,479 juveniles who were given Diversion consequences in 2004. If juveniles were involved in Diversion more than once, the age at the first time they were referred is captured, and only the most serious of the offenses involved are included.

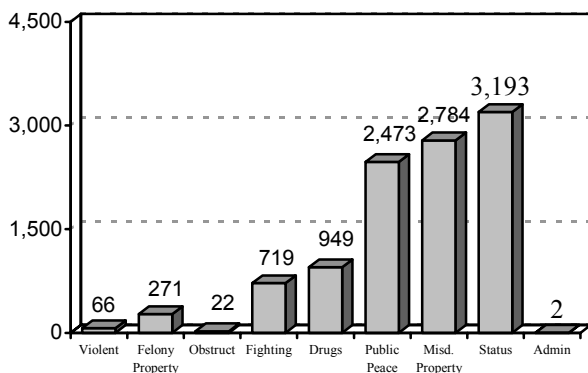
**Ethnicity**



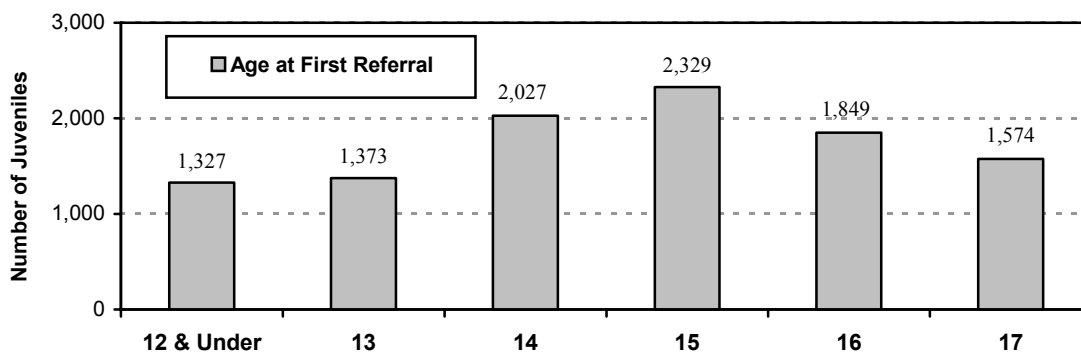
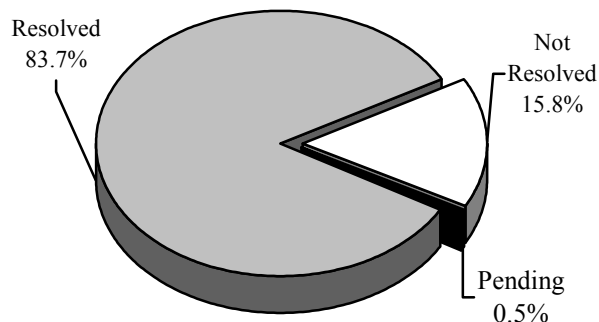
**Gender**



**Most Severe Offense in Diversion**



**Complaint Resolved In Diversion**



## TREATMENT

Each year juvenile probation officers refer thousands of juveniles to various programs in the community. The programs vary from individual or group counseling sessions to specialized residential treatment centers. The table below shows the number of delinquent and incorrigible juveniles who were referred to various treatment programs in 2004. It is possible for a juvenile to become involved in more than one program, or be involved in the same program more than one time. The table counts juveniles only one time if they are involved in a program more than once, but if they are involved with more than one program, they are counted only once in each program.

<b>Counseling Funding Sources</b>	<b>Juveniles</b>
Mental Competency	313
Diversion	2,417
Probation Counseling and Therapy	10,156
Juvenile Intensive Probation Counseling	535
Functional Family Therapy	66
Multisystemic Therapy	47
Miscellaneous Testing and Services	119
<b>Total</b>	<b>13,653</b>

<b>Out-Of-Home Treatment Programs</b>	<b>Juveniles</b>
Alternatives to Detention	188
Intensive Outpatient	263
Residential Treatment	521
<b>Total</b>	<b>972</b>

## RECIDIVISM

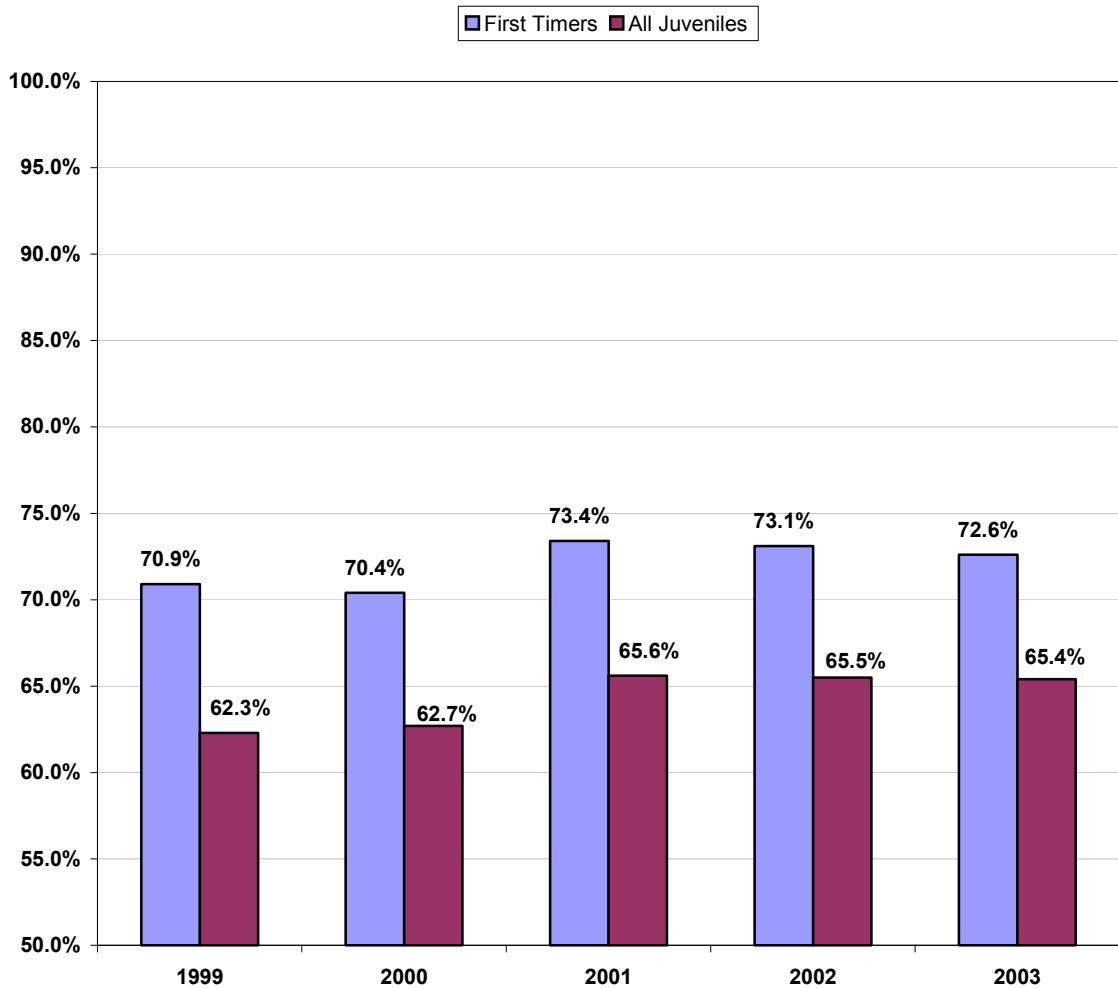
### PROBABILITY OF NOT GETTING A NEW OFFENSE WITHIN ONE YEAR

Recidivism is the variable most commonly used to judge how a juvenile has responded to some intervention by the juvenile justice system. This section examines a juvenile’s performance for one year from the time they complete involvement with the Probation Department. All the tables on this and the following two pages show the likelihood that a juvenile will not be apprehended for an illegal act within that year.

Juveniles who are 17 years old at the time of completion are not included, because they will not have an entire year available. Violations of probation are not counted as recidivism.

The first table looks at all offenses received in a year and shows the percentage of juveniles who have remained referral-free for 365 days. “First Timers” includes only juveniles who generated their first referral in that year. “All Juveniles” includes the first referral in that year of any juvenile regardless of referral history. First Timers always have a better chance of success, simply because most juveniles who are apprehended learn from their experience and are never referred again.

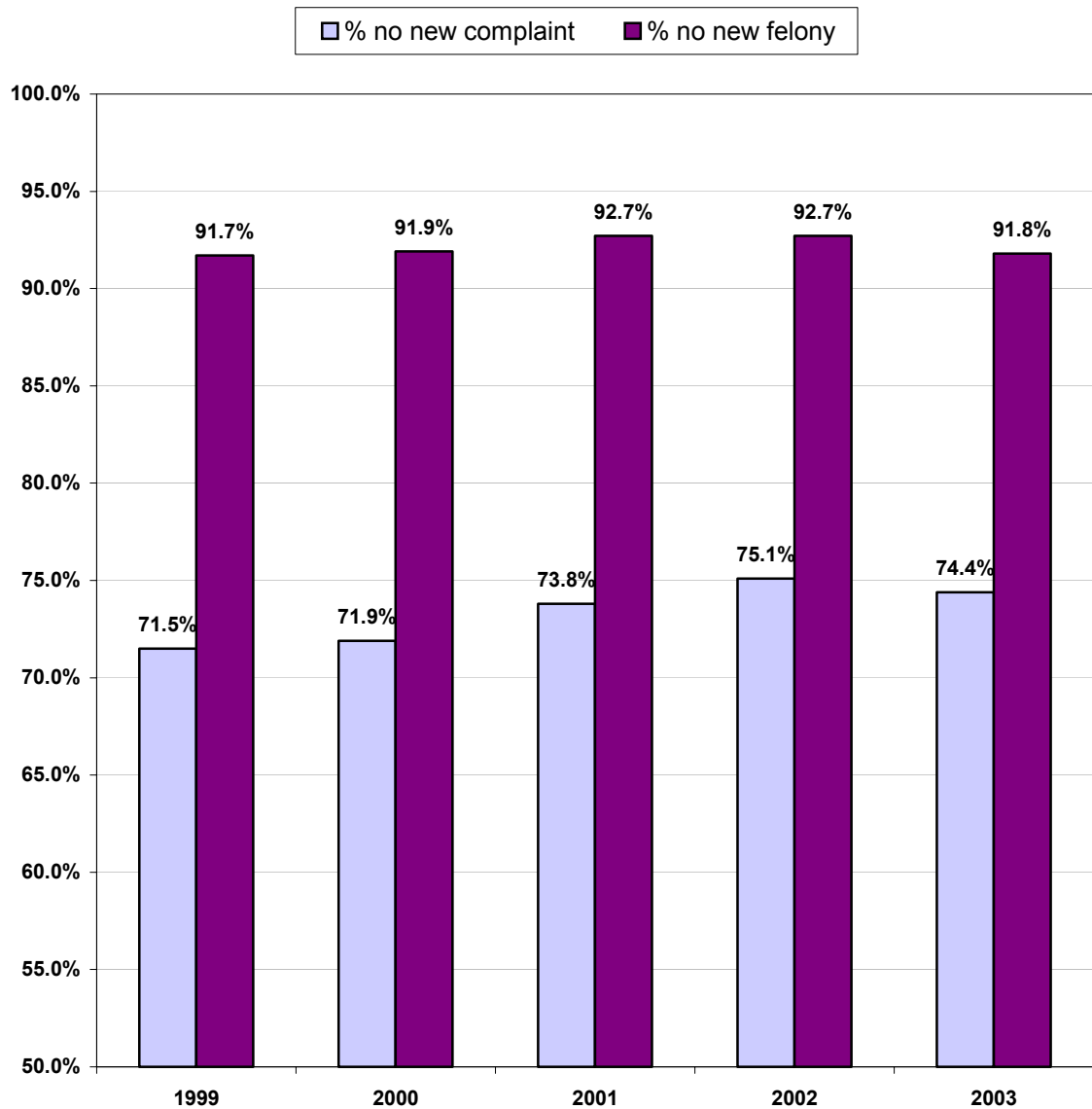
**Percent of Any Juvenile Going One Year without Generating Another Complaint**



## RECIDIVISM DIVERSION

By law juveniles who are apprehended for illegal activity must complete some consequence, which could be in a Diversion Program, or through placement on Probation. The following two tables show the probability of not being apprehended for a new offense for all the juveniles who successfully completed either Diversion or Probation in a given year. The time starts when the juvenile completes the program and runs for 365 days. Again, juveniles who are 17 years old at time of completion are not included.

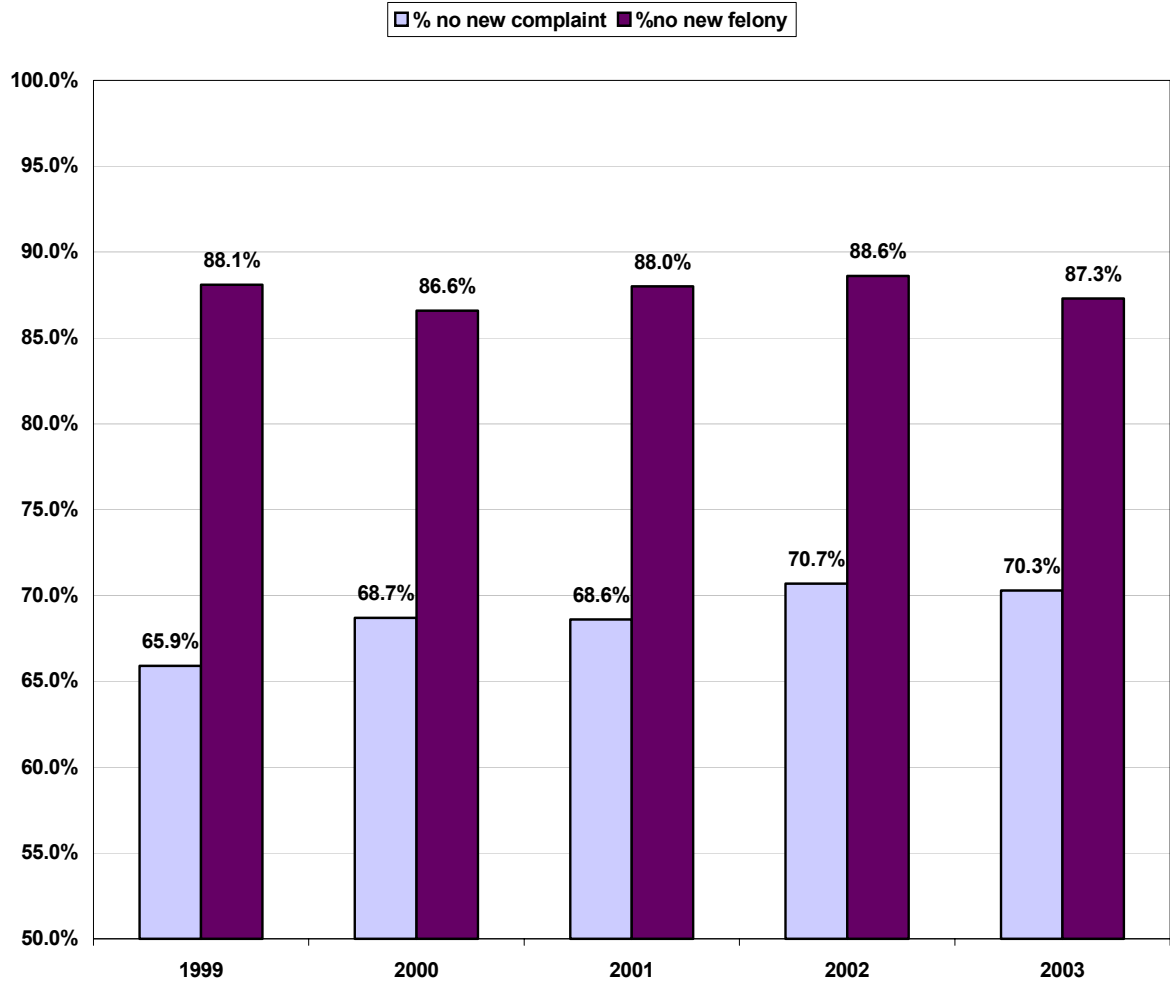
**Percent of Juveniles with no Complaints or Felonies within One Year of  
Successful Completion of Diversion**





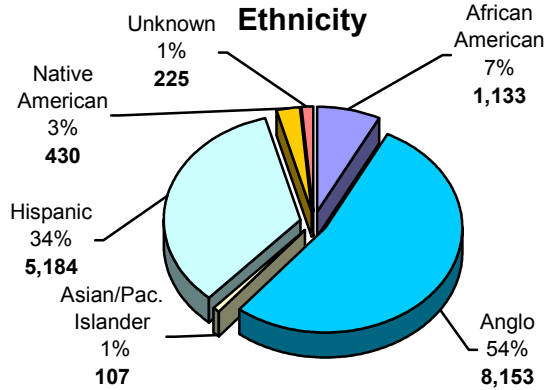
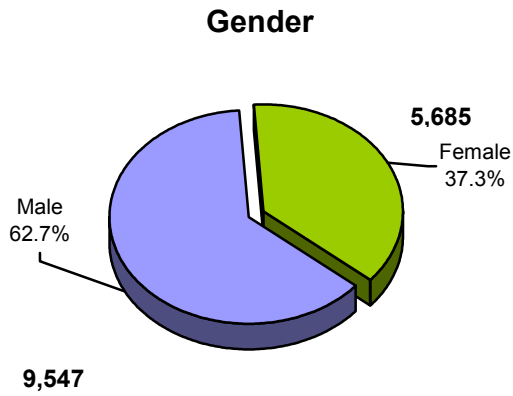
# RECIDIVISM PROBATION

Percent of Juveniles with no Complaints or Felonies within One Year of Successful Release from Probation



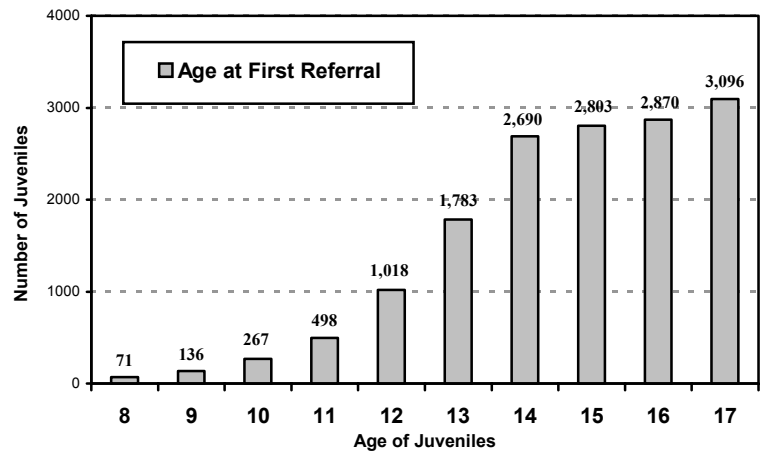
## CLASS OF 2004

In 2004, approximately 46,723 juveniles in Maricopa County turned 18 and became adults. The following is a cohort analysis of these young adults born in 1986. From this cohort 15,232 or 32.6% of these juveniles were referred for illegal activity during their juvenile years. The following tables and graphs detail the characteristics and referral information for the juveniles in this group.



\* Other also includes Juveniles whose origin was listed as Unknown.

Age at First Referral by Number of Total Referrals		
Age at First Complaint	Juveniles	Average Number of Complaints
8	71	4.04
9	136	4.55
10	267	4.44
11	498	4.47
12	1,018	3.88
13	1,783	3.34
14	2,690	2.71
15	2,803	2.11
16	2,870	1.63
17	3,096	1.19
<b>Total</b>	<b>15,232</b>	<b>2.35</b>



Number of Juveniles	Percent of Cohort	Number of Complaints
8,601	18.4%	1
2,732	5.8%	2
1,211	2.6%	3
740	1.6%	4
476	1.0%	5
1,472	3.2%	6 or More
<b>15,232</b>	<b>32.6%</b>	<b>Total Juveniles with Complaints</b>

Number of Juveniles	Percent of Cohort	
5,014	10.7%	had a felony offense
1,616	3.5%	had two or more felony offenses
1,137	2.4%	had a violent offense
171	0.4%	had two or more violent offenses
2,106	4.5%	had a drug offense
366	0.8%	had two or more drug offenses
4,337	9.3%	were placed in probation
373	0.8%	were committed to Dept of Juv Corrections
308	0.7%	were prosecuted as adults

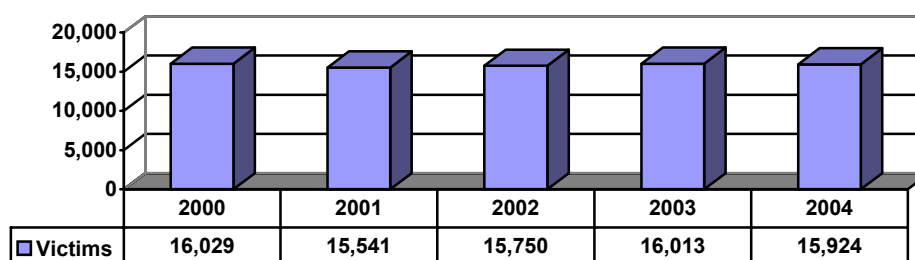
## VICTIMS AND RESTITUTION

Restitution is the act of returning or restoring to a victim (either a person or a legal entity) what is theirs. The Court can order full or partial restitution to a victim after the juvenile has been adjudicated delinquent (found guilty).

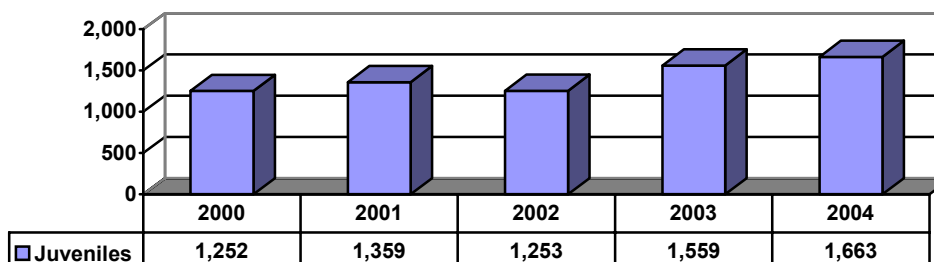
After the juvenile's first court hearing the Victim Services Unit at the Juvenile Probation Department sends a letter to the victim(s) of the crime the juvenile has been charged with. Victim Services keeps the victim(s) informed of all developments in the case, and informs them about how to request restitution. Victims must submit a verified Victim Statement to the Court to receive restitution.

The charts below show the number of victims that have been contacted each year by the Victim Services Unit, the number juveniles who have paid restitution, and the amount they have paid.

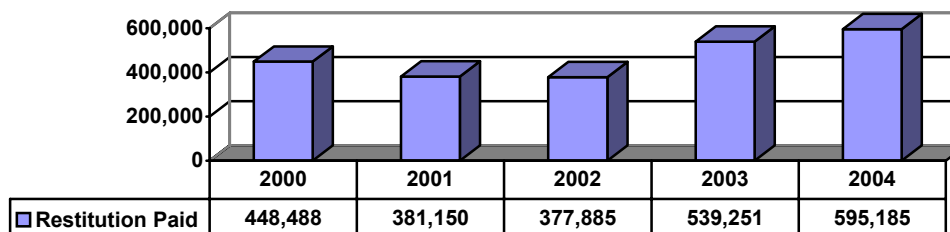
**Number of Victims Contacted**



**Number of Juveniles Paying Restitution**



**Amount of Restitution Paid**

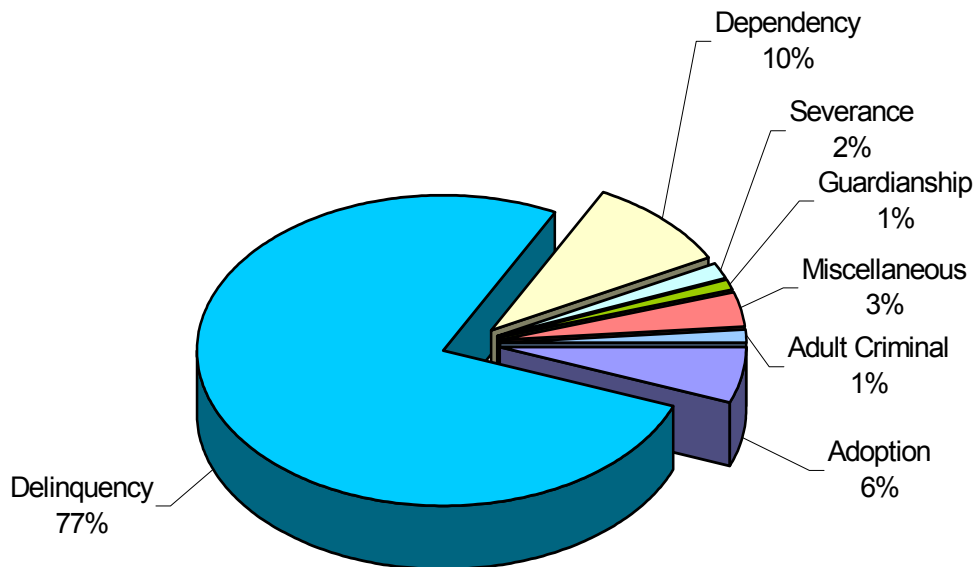


## COURT ACTIVITY 2004 PETITIONS FILED

Juvenile judges and commissioners make decisions about adoption and dependency matters as well as delinquency and incorrigibility. The data on the next three pages show the number of the different kinds of petitions and hearings which occupy the Juvenile Court Calendar.

The significant changes in delinquency petitions over the past few years are a result of procedural changes in the processing of citations: In 1999 they were heard as delinquency matters by juvenile court judges and commissioners, rather than juvenile hearing officers throughout the county. In 2001, as more cases were being cited directly to the juvenile court center they were being diverted to probation officers. This area will continue to change as the process is improved to handle the increasing number of citations being cited directly to the juvenile court.

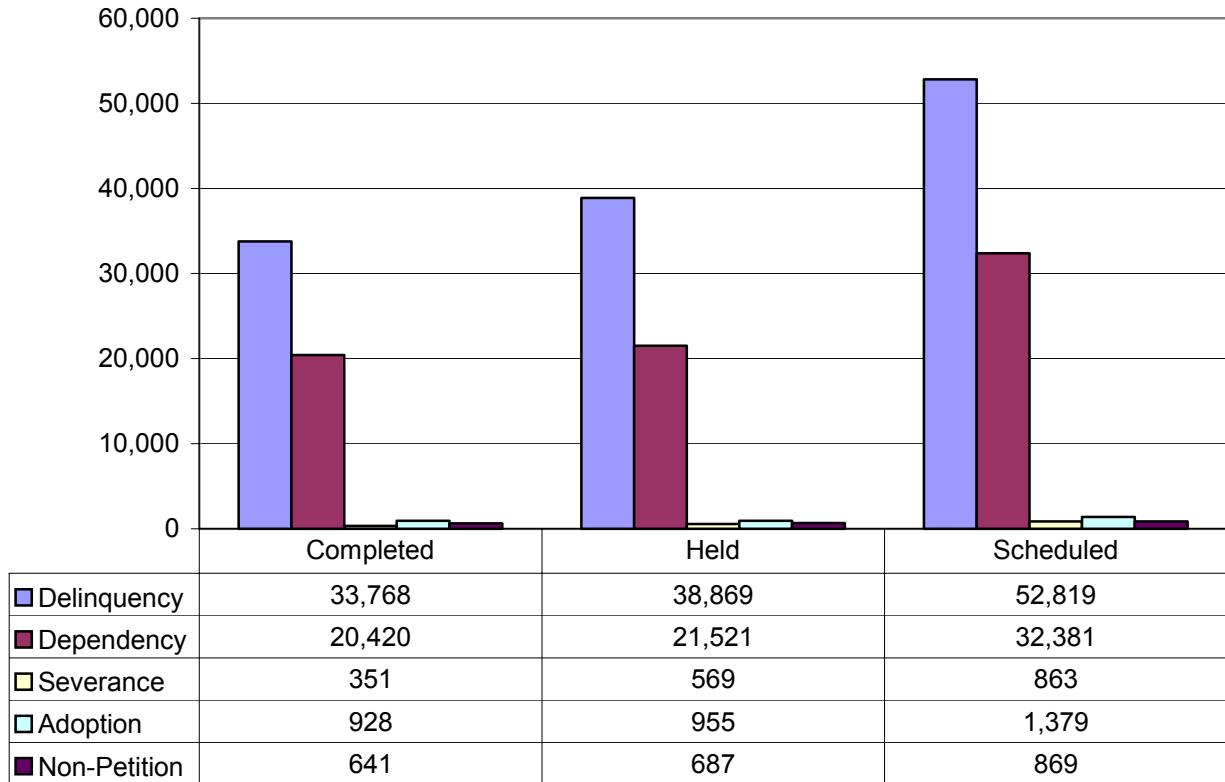
The decrease in severance petitions is a result of a procedural change for dependency wards. If a dependent juvenile is to be adopted and a severance is necessary, it can now be accomplished through filing of a motion, rather than a separate petition. This change began in late 1999.



Petitions Filed	2000	2001	2002	2003	2004
Adoption	999	956	935	929	1,063
Delinquency	17,356	15,847	14,400	14,244	14,285
Dependency	1,003	952	1,145	1,621	1,813
Severance	323	288	265	246	298
Guardianship	0	0	0	0	224
Adult Criminal	396	365	365	258	274
Miscellaneous	520	534	532	660	637
<b>TOTAL</b>	<b>20,596</b>	<b>18,942</b>	<b>17,642</b>	<b>17,958</b>	<b>18,594</b>

In January of 2004 Guardianship petitions involving minors were moved from the Adult Court to the Juvenile Court for handling with other Juvenile Court matters.

## COURT ACTIVITY 2004 COURT HEARING SUMMARY



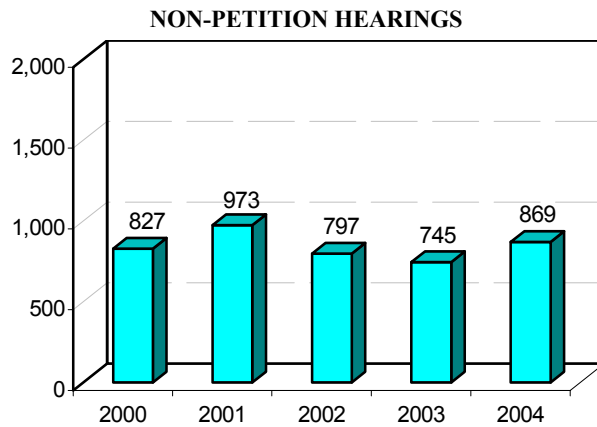
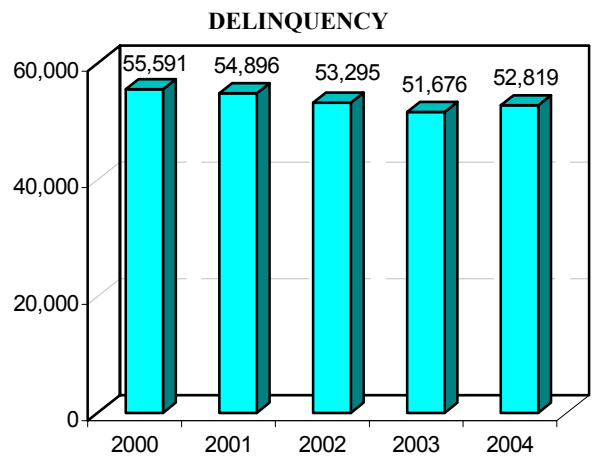
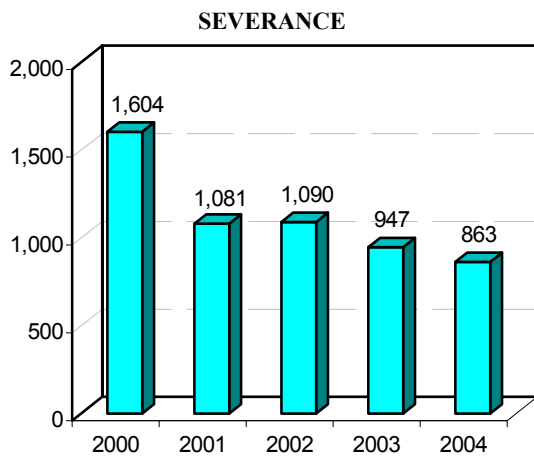
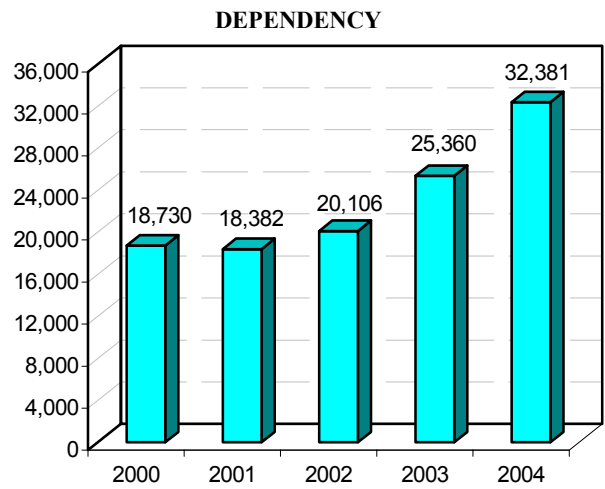
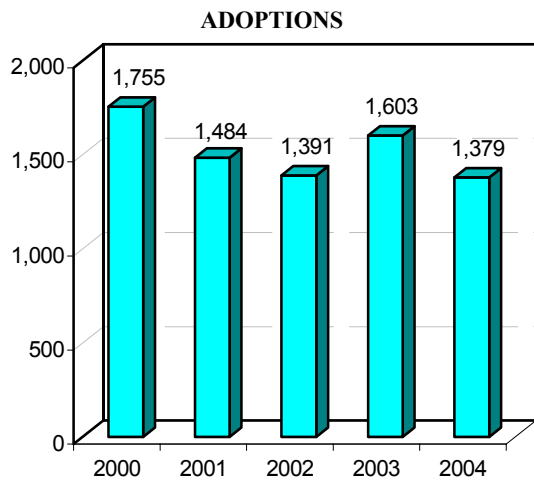
A hearing is considered as “Held” if it has a recorded start and end time. A Completed hearing is one showing a result of completed or under advisement; in other words, it is not continued to another date.

In 2004, a total of 88,311 hearings were scheduled, a total of 62,601 hearings were held, and 56,108 were completed.

Almost two-thirds (60%) of hearings scheduled were for delinquency matters.

# COURT ACTIVITY

## COURT HEARINGS SCHEDULED 2000 – 2004



## TOP 20 ZIP CODES

This table focuses on the 20 ZIP codes in Maricopa County that generated the most complaints in 2004. Note that it portrays where the juvenile lived at the time of the offense, not where the offense took place. The ZIPs are ranked one through twenty and compared to their ranking and number of complaints five years earlier in 2000.

The last column shows the rate at which complaints rose or fell during the five years. Areas that have increased have a percentage greater than 100. They are in Chandler, Mesa, Central Phoenix, Avondale, Tempe, and Glendale. Overall complaints from these 20 ZIP codes have decreased by almost 6% since 2000.

Rank 2004	ZIP	City	Total 2004	Rank 2000	Total 2000	2004 Percentage of 2000
1	85301	Glendale	1,082	1	1,375	78.7%
2	85225	Chandler	1,056	13	744	141.9%
3	85033	Phoenix	999	2	1,223	81.7%
4	85035	Phoenix	906	4	1,102	82.2%
5	85201	Mesa	858	11	776	110.6%
6	85204	Mesa	773	8	929	83.2%
7	85009	Phoenix	759	7	971	78.2%
8	85008	Phoenix	666	6	1,020	65.3%
9	85323	Avondale	658		0	
10	85031	Phoenix	645	15	695	92.8%
11	85281	Tempe	643	25	473	135.9%
12	85032	Phoenix	640	12	761	84.1%
13	85345	Peoria	620	16	638	97.2%
14	85041	Phoenix	601	10	824	72.9%
15	85040	Phoenix	582	3	1,123	51.8%
16	85283	Tempe	565		0	
17	85224	Chandler	557	5	1,082	51.5%
18	85017	Phoenix	556	17	619	89.8%
19	85282	Tempe	539	20	531	101.5%
20	85006	Phoenix	496	9	860	57.7%
<b>Total</b>			14,201		15,746	90.2%
<b>All Complaints</b>			34,103		36,013	94.7%
<b>% of All Complaints from Top 20</b>			41.64%		43.72%	

## MARICOPA COUNTY ZIP CODES OF RESIDENCE BY CITY FOR 2004 REFERRALS

City	ZIP	Violent	Felony Prop.	Obstr.	Fight	Drugs	Peace	Misd. Prop.	Status	Hold	Total
Aguila	85320	0	2	0	0	0	5	0	0	0	7
Apache Jct	85220	6	11	6	1	10	42	18	9	7	110
Arlington	85322	0	0	1	0	0	2	2	1	0	6
Avondale	85323	25	73	51	69	60	193	111	74	2	658
Buckeye	85326	13	14	9	19	15	93	29	68	3	263
Carefree	85377	0	1	0	0	2	4	1	0	0	8
Cashion	85329	0	4	6	3	5	11	4	4	0	37
Cave Creek	85327	0	0	1	1	0	4	1	0	0	7
Cave Creek	85331	2	7	2	4	15	53	8	8	1	100
Chandler	85224	16	45	43	40	37	143	70	163	0	557
Chandler	85225	36	115	97	70	79	250	136	257	16	1056
Chandler	85226	10	22	25	16	41	107	51	72	0	344
Chandler	85227	0	1	0	0	0	0	1	1	0	3
Chandler	85244	0	0	0	0	0	1	0	0	0	1
Chandler	85246	0	1	0	0	0	0	0	0	0	1
Chandler	85248	3	12	3	17	24	67	22	53	0	201
Chandler	85249	4	10	8	9	12	40	20	30	1	134
El Mirage	85335	22	56	66	46	37	91	63	68	0	449
Ftn Hills	85268	6	9	6	5	16	89	11	10	0	152
Ftn Hills	85269	0	0	0	0	0	1	0	0	0	1
Gila Bend	85337	0	0	1	1	2	20	4	8	1	37
Gilbert	85233	12	18	30	31	48	59	45	54	3	300
Gilbert	85234	17	13	25	36	36	100	55	43	2	327
Gilbert	85296	11	30	21	38	48	92	68	47	1	356
Gilbert	85297	1	12	4	18	23	26	22	20	1	127
Glendale	85301	58	136	113	105	83	230	147	206	4	1082
Glendale	85302	15	43	59	28	26	98	56	77	5	407
Glendale	85303	22	46	44	52	39	109	60	56	1	429
Glendale	85304	9	19	18	24	31	93	29	28	1	252
Glendale	85305	3	8	1	13	6	19	21	5	1	77
Glendale	85306	10	35	20	20	6	60	32	22	1	206
Glendale	85307	0	7	8	3	11	23	17	13	0	82
Glendale	85308	15	35	29	28	29	179	72	96	0	483
Glendale	85309	0	0	0	0	0	1	0	0	0	1
Glendale	85310	3	9	15	5	5	73	23	28	0	161
Glendale	85318	0	0	0	0	0	1	0	1	0	2
Goodyear	85338	4	29	15	30	22	68	57	29	0	254
Laveen	85339	1	14	9	3	7	17	4	18	0	73
Litchfield Pk	85340	7	20	12	10	11	32	23	15	0	130
Mesa	85201	31	80	81	51	82	205	160	156	12	858
Mesa	85202	7	16	35	26	54	113	64	48	5	368
Mesa	85203	17	35	40	36	48	96	51	68	6	397



## MARICOPA COUNTY ZIP CODES OF RESIDENCE BY CITY FOR 2004 REFERRALS

City	ZIP	Violent	Felony Prop.	Obstr.	Fight	Drugs	Peace	Misd. Prop.	Status	Hold	Total
Mesa	85204	24	63	77	56	63	240	122	121	7	773
Mesa	85205	17	33	24	25	39	114	48	32	2	334
Mesa	85206	1	22	10	14	15	39	32	21	1	155
Mesa	85207	7	22	33	19	40	110	53	48	4	336
Mesa	85208	12	38	38	33	41	147	90	72	7	478
Mesa	85210	18	43	42	24	57	144	66	58	2	454
Mesa	85212	9	22	18	9	22	46	31	10	2	169
Mesa	85213	8	8	28	27	32	74	38	22	6	243
Mesa	85214	0	0	1	0	0	0	0	0	0	1
Mesa	85215	3	7	9	3	8	25	9	2	0	66
Mesa	85216	0	0	3	0	0	0	1	1	0	5
Mesa	85236	2	5	4	5	6	20	8	16	0	66
Mesa	85277	0	0	0	0	0	0	0	1	0	1
Morristown	85342	2	0	1	0	2	3	0	1	0	9
New River	85087	3	3	2	0	2	14	2	4	0	30
Palo Verde	85343	0	0	0	0	0	2	1	0	0	3
Peoria	85345	15	57	66	37	55	172	83	133	2	620
Peoria	85381	6	18	14	14	24	59	24	18	0	177
Peoria	85382	6	24	17	18	14	66	41	22	0	208
Peoria	85383	3	7	5	2	3	29	10	9	0	68
Peoria	85385	0	0	0	1	1	1	1	0	0	4
Phoenix	85003	5	12	10	2	8	22	14	21	0	94
Phoenix	85004	0	6	15	2	0	8	5	9	0	45
Phoenix	85006	23	55	64	33	36	90	37	154	4	496
Phoenix	85007	11	20	22	12	14	41	18	29	1	168
Phoenix	85008	38	90	76	34	35	129	83	174	7	666
Phoenix	85009	20	85	78	41	49	155	75	252	4	759
Phoenix	85012	0	2	1	1	3	5	3	4	0	19
Phoenix	85013	3	20	26	20	11	35	33	16	7	171
Phoenix	85014	8	25	31	12	14	45	34	52	2	223
Phoenix	85015	13	65	44	20	36	100	100	95	3	476
Phoenix	85016	12	38	28	16	17	51	31	77	2	272
Phoenix	85017	25	56	34	32	34	84	88	202	1	556
Phoenix	85018	9	24	21	10	18	60	34	32	2	210
Phoenix	85019	25	61	31	17	29	53	52	188	1	457
Phoenix	85020	11	39	34	20	16	57	41	77	3	298
Phoenix	85021	5	39	30	24	15	53	62	102	4	334
Phoenix	85022	21	37	25	24	25	87	52	70	3	344
Phoenix	85023	16	28	31	26	14	87	77	45	2	326
Phoenix	85024	4	9	13	11	11	38	21	13	0	120
Phoenix	85027	39	42	36	31	17	78	58	85	2	388
Phoenix	85028	5	10	3	4	10	32	20	17	1	102

## MARICOPA COUNTY ZIP CODES OF RESIDENCE BY CITY FOR 2004 REFERRALS

City	ZIP	Violent	Felony Prop.	Obstr.	Fight	Drugs	Peace	Misd. Prop.	Status	Hold	Total
Phoenix	85029	20	60	40	40	23	91	85	93	3	455
Phoenix	85031	12	64	50	30	30	97	62	296	4	645
Phoenix	85032	38	62	60	46	24	168	117	121	4	640
Phoenix	85033	45	79	105	63	69	165	138	333	2	999
Phoenix	85034	4	27	31	5	10	25	17	47	0	166
Phoenix	85035	34	84	97	42	45	143	113	348	0	906
Phoenix	85037	19	71	44	34	45	105	90	49	4	461
Phoenix	85039	0	0	0	0	0	2	1	1	0	4
Phoenix	85040	36	80	51	30	42	121	124	92	6	582
Phoenix	85041	34	120	73	27	51	107	70	117	2	601
Phoenix	85042	15	36	39	25	25	45	51	26	2	264
Phoenix	85043	8	28	29	21	13	57	35	58	2	251
Phoenix	85044	12	17	15	9	10	54	36	30	2	185
Phoenix	85045	0	1	1	1	0	7	7	2	0	19
Phoenix	85048	7	12	5	5	3	51	35	22	1	141
Phoenix	85050	4	8	13	10	6	38	16	12	1	108
Phoenix	85051	19	47	58	41	25	68	95	53	2	408
Phoenix	85052	0	0	0	0	0	0	1	0	0	1
Phoenix	85053	9	31	29	13	9	37	33	30	1	192
Phoenix	85054	1	2	1	0	0	7	1	1	0	13
Phoenix	85075	0	0	0	0	0	0	0	1	0	1
Phoenix	85080	0	1	0	0	0	1	0	0	0	2
Phoenix	85085	1	3	0	4	1	8	5	5	0	27
Phoenix	85086	3	4	5	12	7	49	10	21	1	112
Phoenix	85099	0	0	0	0	0	1	0	0	0	1
Queen Creek	85242	13	16	18	13	17	67	28	12	3	187
Scottsdale	85250	0	4	4	10	13	62	12	19	1	125
Scottsdale	85251	10	24	21	17	25	98	41	39	0	275
Scottsdale	85253	1	2	3	5	5	35	3	1	2	57
Scottsdale	85254	8	14	5	21	13	121	32	28	1	243
Scottsdale	85255	1	9	3	5	11	53	6	11	0	99
Scottsdale	85257	12	21	33	47	27	103	31	44	1	319
Scottsdale	85258	1	3	3	9	12	45	14	12	0	99
Scottsdale	85259	1	8	3	4	10	78	9	12	0	125
Scottsdale	85260	3	14	3	11	15	107	16	14	0	183
Scottsdale	85262	0	4	2	2	5	25	6	0	0	44
Scottsdale	85264	0	0	0	1	4	8	5	1	0	19
Sun City	85373	0	0	0	0	1	5	1	3	0	10
Sun City West	85375	0	0	0	0	0	0	1	0	0	1
Surprise	85374	15	18	22	35	42	100	56	133	2	423
Surprise	85379	4	2	3	6	16	27	9	23	1	91
Surprise	85387	0	0	2	1	4	9	4	2	0	22

## MARICOPA COUNTY ZIP CODES OF RESIDENCE BY CITY FOR 2004 REFERRALS

City	ZIP	Violent	Felony Prop.	Obstr.	Fight	Drugs	Peace	Misd. Prop.	Status	Hold	Total
Tempe	85281	33	68	44	50	57	141	91	157	2	643
Tempe	85282	18	36	35	56	39	120	92	141	2	539
Tempe	85283	18	46	61	55	51	104	80	149	1	565
Tempe	85284	1	6	8	4	17	35	10	30	0	111
Tempe	85285	0	0	0	1	4	1	0	0	0	6
Tolleson	85353	11	27	25	15	24	38	20	32	2	194
Tonopah	85354	1	0	1	0	1	4	1	22	0	30
Waddell	85355	1	0	2	1	5	10	2	1	1	23
Wickenburg	85358	1	3	5	2	1	2	1	1	0	16
Wickenburg	85390	0	1	4	5	3	9	2	3	1	28
Wittmann	85361	1	5	8	3	8	24	7	15	0	71
Youngtown	85363	0	3	3	4	1	11	6	15	0	43
Non-Maricopa Complaints		43	80	112	43	95	294	192	199	42	1,100
Total		1,333	3,374	3,128	2,421	2,770	8,708	5,076	7,038	255	34,103

## ARIZONA COUNTIES ZIP CODES FOR 2004 REFERRALS

City	Grand						Petty			Totals
	Violent	Theft	Obstr	Fight	Drugs	Peace	Theft	Status	Admin	
APACHE	0	1	1	4	1	3	3	1	0	14
COCHISE	1	0	5	0	0	2	0	2	4	14
COCONINO	0	0	5	1	2	8	10	0	1	27
GILA	1	2	2	0	3	8	4	1	2	23
GRAHAM	0	0	0	0	0	0	4	0	1	5
GREENLEE	0	0	0	0	0	0	0	1	0	1
LA PAZ	0	1	0	1	0	0	0	1	0	3
MOHAVE	0	1	2	0	0	0	4	0	0	7
NAVAJO	0	0	1	1	2	5	6	6	2	23
PIMA	3	5	7	2	5	24	12	8	3	69
PINAL	5	14	7	4	15	47	51	11	9	163
SANTA CRUZ	0	0	0	0	0	2	0	0	0	2
YAVAPAI	0	2	5	3	8	23	11	11	0	63
YUMA	0	2	0	1	2	2	1	3	0	11
<b>Totals</b>	<b>10</b>	<b>28</b>	<b>35</b>	<b>17</b>	<b>38</b>	<b>124</b>	<b>106</b>	<b>45</b>	<b>22</b>	<b>425</b>

**SCHOOL DISTRICTS OF JUVENILES REFERRED  
ELEMENTARY DISTRICTS**

School District	Violent	Grand Theft	Obstr	Fight	Drugs	Peace	Petty Theft	Status	Admin	Totals
Alhambra	19	47	14	37	31	37	58	200	0	443
Avondale	3	12	10	4	8	27	31	41	1	137
Balsz	9	1	6	6	2	9	15	17	0	65
Buckeye	4	3	2	4	5	16	5	17	0	56
Cartwright	16	32	39	53	34	32	78	276	0	560
Creighton	4	23	10	10	11	15	16	80	1	170
Fowler	2	7	4	4	3	7	6	21	0	54
Glendale	15	43	25	53	28	57	79	133	1	434
Higley	3	10	18	12	21	28	22	24	1	139
Isaac	5	31	9	17	6	26	24	161	0	279
Kyrene	10	9	5	13	5	16	25	17	1	101
Laveen	4	4	0	2	1	6	1	30	0	48
Liberty	3	6	1	4	3	5	7	10	0	39
Litchfield	4	5	5	10	8	9	8	6	0	55
Littleton	0	3	3	9	5	6	8	1	1	36
Madison	1	6	2	8	2	14	21	35	0	89
Morristown	0	0	0	0	1	3	0	0	0	4
Murphy	2	1	4	3	5	8	4	10	0	37
Nadaburg	1	0	0	1	0	0	2	0	0	4
Osborn	5	20	12	8	12	6	28	19	0	110
Palo Verde	1	5	2	2	3	2	3	4	1	23
Phoenix	33	51	40	27	27	39	51	105	0	373
Riverside	2	1	0	1		1	2	8	0	15
Roosevelt	21	44	46	22	27	63	47	111	0	381
Tempe	35	51	27	66	53	81	100	155	2	570
Tolleson	4	10	4	4	1	7	10	6	0	46
Union	0	0	0	0	0	1	5	0	0	6
Washington	33	62	31	58	30	61	133	355	2	765
Wilson	4	29	5	3	12	13	7	52	0	125
<b>Totals</b>	<b>243</b>	<b>516</b>	<b>324</b>	<b>441</b>	<b>344</b>	<b>595</b>	<b>796</b>	<b>1894</b>	<b>11</b>	<b>5164</b>

**SCHOOL DISTRICTS OF JUVENILES REFERRED  
HIGH SCHOOL DISTRICTS**

School District	Grand						Petty			Totals
	Violent	Theft	Obstr	Fight	Drugs	Peace	Theft	Status	Admin	
Agua Fria	9	39	20	25	32	62	56	22	0	265
Buckeye Union	6	4	6	11	7	26	21	19	1	101
Glendale Union	35	107	107	96	93	230	213	41	1	923
Phoenix Union	92	303	266	104	185	426	393	1,249	10	3,028
Tempe Union	39	88	90	96	116	256	215	244	1	1,145
Tolleson Union	18	73	57	39	63	104	98	51	0	503
<b>Totals</b>	<b>199</b>	<b>614</b>	<b>546</b>	<b>371</b>	<b>496</b>	<b>1,104</b>	<b>996</b>	<b>1,626</b>	<b>13</b>	<b>5,965</b>

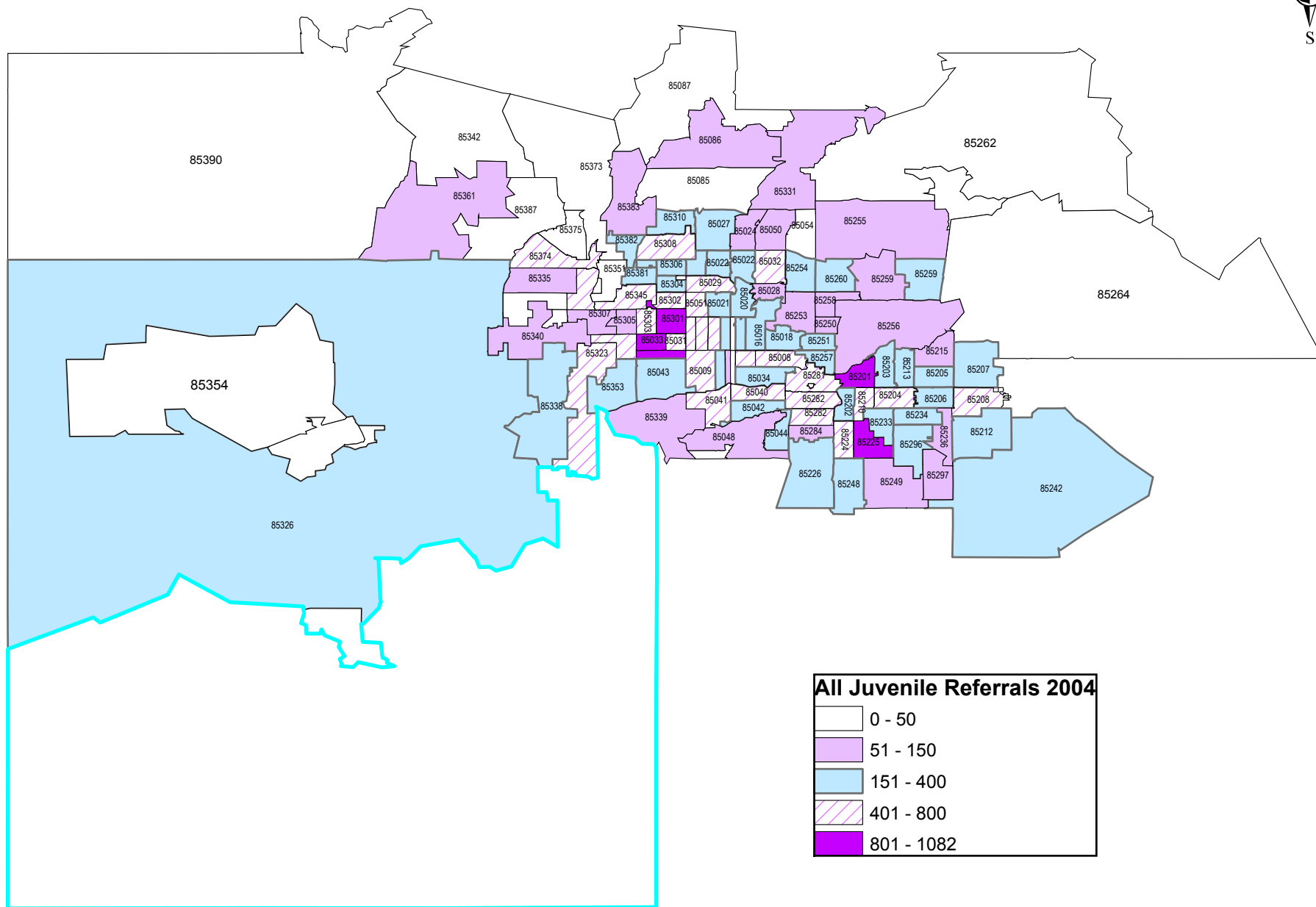
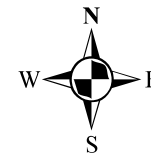
**UNIFIED DISTRICTS**

School District	Grand						Petty			Totals
	Violent	Theft	Obstr	Fight	Drugs	Peace	Theft	Status	Admin	
Apache Junction	0	2	2	0	4	12	26	3	3	52
Cave Creek	3	5		7	14	29	8	4		70
Chandler	27	100	64	72	88	179	168	221	6	925
Deer Valley	34	85	58	60	48	211	178	224	4	902
Dysart	30	48	67	66	77	113	88	166	0	655
Fountain Hills	4	11	5	4	12	41	11	9	0	97
Gila Bend	0	0	1	1	1	7	5	7	0	22
Gilbert	37	64	62	106	130	202	180	129	5	915
Mesa	108	259	221	227	364	667	509	612	14	2,981
Paradise Valley	53	108	64	94	76	275	222	234	3	1,129
Peoria	34	126	79	83	108	256	175	187	0	1,048
Queen Creek	3	4	3	6	4	13	11	2	0	46
Scottsdale	20	64	30	59	93	238	113	88	0	705
Wickenburg	0	6	10	10	9	12	2	5	0	54
<b>Totals</b>	<b>353</b>	<b>882</b>	<b>666</b>	<b>795</b>	<b>1,028</b>	<b>2,255</b>	<b>1,696</b>	<b>1,891</b>	<b>35</b>	<b>9,601</b>

**MISCELLANEOUS SCHOOLS**

School District	Grand						Petty			Totals
	Violent	Theft	Obstr	Fight	Drugs	Peace	Theft	Status	Admin	
Charter Schools	172	510	832	269	410	872	544	309	17	3,935
Colleges	2	11	13	4	8	18	16	1	1	74
East Valley Inst Tech	0	1	2	2	4	12	3	3	0	27
Maricopa County Regional Spec	18	56	91	37	27	54	38	46	3	370
Other	35	76	105	63	46	85	92	46	1	549
Residential Treatment Facility	29	25	145	57	7	20	22	13	3	321
<b>Totals</b>	<b>256</b>	<b>679</b>	<b>1,188</b>	<b>432</b>	<b>502</b>	<b>1,061</b>	<b>715</b>	<b>418</b>	<b>25</b>	<b>5,276</b>

# Juvenile Referrals by Zip Code





# Juvenile Violent Referrals by Zip Code

